

Managing the Risk of Corrosion between Marulan and Dapto on Line 8

RIT-T – Project Specification Consultation Report

Region: Southern

Date of issue: 11 September 2018

Disclaimer

This suite of documents comprises TransGrid's application of the Regulatory Investment Test for Transmission (RIT-T) which has been prepared and made available solely for information purposes. It is made available on the understanding that TransGrid and/or its employees, agents and consultants are not engaged in rendering professional advice. Nothing in these documents is a recommendation in respect of any possible investment.

The information in these documents reflect the forecasts, proposals and opinions adopted by TransGrid as at 11 September 2018 other than where otherwise specifically stated. Those forecasts, proposals and opinions may change at any time without warning. Anyone considering information provided in these documents, at any date, should independently seek the latest forecasts, proposals and opinions.

These documents include information obtained from the Australian Energy Market Operator (AEMO) and other sources. That information has been adopted in good faith without further enquiry or verification. The information in these documents should be read in the context of the Electricity Statement of Opportunities, the National Transmission Network Development Plan published by AEMO and other relevant regulatory consultation documents. It does not purport to contain all of the information that AEMO, a prospective investor, Registered Participant or potential participant in the National Electricity Market (NEM), or any other person may require for making decisions. In preparing these documents it is not possible, nor is it intended, for TransGrid to have regard to the investment objectives, financial situation and particular needs of each person or organisation which reads or uses this document. In all cases, anyone proposing to rely on or use the information in this document should:

1. Independently verify and check the currency, accuracy, completeness, reliability and suitability of that information
2. Independently verify and check the currency, accuracy, completeness, reliability and suitability of reports relied on by TransGrid in preparing this document
3. Obtain independent and specific advice from appropriate experts or other sources.

Accordingly, TransGrid makes no representations or warranty as to the currency, accuracy, reliability, completeness or suitability for particular purposes of the information in this suite of documents.

Persons reading or utilising this suite of RIT-T related documents acknowledge and accept that TransGrid and/or its employees, agents and consultants have no liability for any direct, indirect, special, incidental or consequential damage (including liability to any person by reason of negligence or negligent misstatement) for any damage resulting from, arising out of or in connection with, reliance upon statements, opinions, information or matter (expressed or implied) arising out of, contained in or derived from, or for any omissions from the information in this document, except insofar as liability under any New South Wales and Commonwealth statute cannot be excluded.

Executive summary

This RIT-T has been initiated to address corrosion issues on a key transmission line linking Southern New South Wales with the Wollongong and Sydney load centres

This Project Specification Consultation Report (PSCR) represents the first step in the application of the Regulatory Investment Test for Transmission (RIT-T) to identify options for mitigating the risk TransGrid, and its ultimate downstream consumers, face in terms of corroding components of one of the key 330 kV transmission lines linking Southern New South Wales with the Wollongong and Sydney load centres.

Line 8 was constructed in 1956 and 1962. As part of TransGrid's ongoing routine asset monitoring maintenance, it has been revealed that many of the 175 transmission structures on Line 8 are now experiencing corrosion, including steel towers, insulators, conductor fittings and conductor/earth wire.

The line itself traverses through farmland, national park areas, climbing from the coastal plain up the Illawarra Escarpment. Owing to the nature of the terrain traversed by Line 8, the failure of the corroding transmission structures and/or physical conductor drops presents bushfire risks and safety risks. While these risks have an inherently low probability, the consequences can be catastrophic.

Asset health assessments since 2016 have identified the corrosion related issues on Line 8 and the plan to refurbish the line by replacing or refurbishing the identified corroding components has been in-place since. An allowance has been made for this work in TransGrid's 2018-23 Revenue Proposal to the Australian Energy Regulator.

Rule changes to the National Electricity Rules (NER) in July 2017 extended the application of regulatory investment tests to replacement capital expenditure from 18 September 2017. The application of the RIT-T to replacement expenditure projects commenced on 18 September 2017, however, all replacement expenditure projects that were 'committed' by 30 January 2018 are exempt.

While the planning process for replacing the identified components of Line 8 are now well-advanced, the project is not yet 'committed'. Accordingly, TransGrid has initiated this RIT-T to consult on its proposed expenditure related to replacing these assets.

The 'identified need' for this RIT-T focuses on mitigating bushfire risk

TransGrid manages and mitigates bushfire and safety risk to ensure they are below risk tolerance levels or 'As Low As Reasonably Practicable' ('ALARP'), in accordance with TransGrid's obligations under the *New South Wales Electricity Supply (Safety and Network Management) Regulation 2014* and TransGrid's Electricity Network Safety Management System. In particular, risks are mitigated unless the cost involved in further reducing the risk would be grossly disproportionate to the benefit gained.

TransGrid considers this a 'reliability corrective action' under the RIT-T as the proposed investment is for the purpose of meeting service standards linked to applicable regulatory instruments. Overall, TransGrid consider that the option proposed in this PSCR will enable TransGrid to appropriately manage the bushfire and safety risks associated with Line 8 going forward.

TransGrid considers that refurbishing Line 8 is the only credible network option

TransGrid considers that there is only one feasible option from a technological and project delivery perspective, ie, replacing or refurbishing the identified corroded components in one stage.

This involves remediation of Line 8, including the replacement of asset components, steelwork and foundation remediation and asbestos paint removal. The estimated capital cost of this option is approximately \$6.1 million and it is expected that all works will be completed by 2020/21. By undertaking the remediation works, TransGrid anticipates that the life of the asset will be extended by approximately 20 years.

We have also investigated a range of other potential network options, including, staging the delivery of the remediation work over multiple years, replacing Line 8 and decommissioning the line. However, each of these other potential options is considered to be more inferior to the preferred refurbishment option. The reason is primarily attributable to the fact that the alternate options cost significantly more, and hence have not been progressed further.

In addition, while the remediation work is considered the only feasible option from a technological and project delivery perspective, we have investigated alternate timings for delivery. This assessment has confirmed that the optimal commissioning is for the project to be completed as soon as possible.

TransGrid does not consider there is a role for network support solutions in this RIT-T

TransGrid does not consider that non-network solutions can assist with meeting the identified need for this RIT-T. This is driven by the fact that the network refurbishment proposed is targeted at reducing the risk of bushfires occurring due to physical failure of elements of Line 8 and the relatively low overall cost of refurbishing the line (ie, \$6.1 million in capital cost to replace or refurbish all identified components), as opposed to reducing expected unserved energy.

Notwithstanding, this report sets out the required technical characteristics for non-network options, consistent with the requirements of the RIT-T.

Net benefits have been estimated across three different 'scenarios'

TransGrid has constructed three alternative scenarios for this PSCR assessment – namely:

- > a 'low benefit' scenario, involving a number of assumptions that give rise to a lower bound Net Present Value (NPV) estimate for the refurbishment option, in order to represent a conservative future state of the world with respect to potential benefits that could be realised;
- > a 'central' scenario, which consists of assumptions that reflect TransGrid's central set of variable estimates which, in TransGrid's opinion, provides the most likely scenario; and
- > a 'high benefit' scenario – this scenario reflects an optimistic set of assumptions, which have been selected to investigate an upper bound on reasonably expected net benefits.

A summary of the key variables in each scenario is provided in the table below.

E.Table 1 Summary of the three scenarios investigated

Variable / Scenario	Central	Low benefits	High benefits
Network capital costs	Base estimate	Base estimate + 25%	Base estimate - 25%
Avoided bushfire risk	Base estimate	Base estimate - 25%	Base estimate + 25%
Avoided corrective maintenance	Base estimate	Base estimate - 25%	Base estimate + 25%

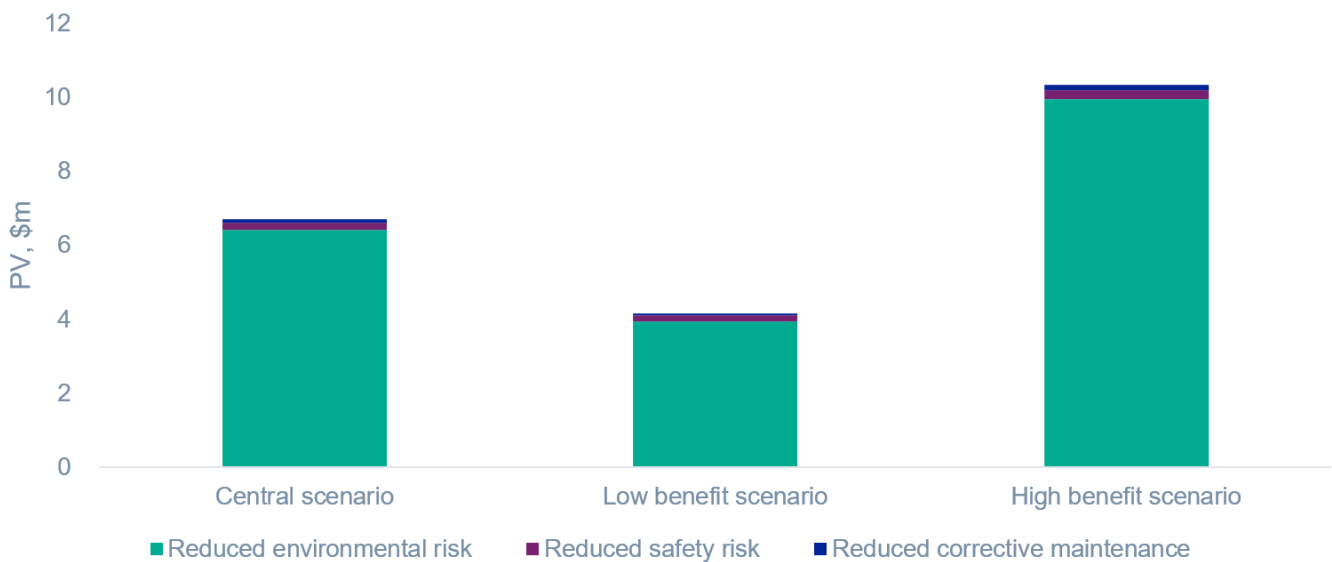
Variable / Scenario	Central	Low benefits	High benefits
Discount rate	7.04 per cent	9.48 per cent	4.60 per cent

The three scenarios do not involve different assumptions about load forecasts (or the Value of Customer Reliability (VCR)) for this RIT-T, as avoided unserved energy is expected to be immaterial and the wider identified need is not affected by demand (or the value consumers place on it).

The refurbishment works are found to strongly deliver positive net benefits

The figure below provides a breakdown of the benefits estimated for the refurbishing option: almost all of the benefits for each option are derived from avoided risk of bushfires (ie, 'environmental risk'), while other avoided costs contribute relatively small amounts to overall gross benefits.

E.Figure 1 Breakdown of gross economic benefits relative to the base case, PV \$m



The table shows that refurbishing Line 8 is found to have positive net market benefits for all scenarios investigated, excluding the low benefit scenario which is found to be marginally negative (approximately -\$2.76 million in Present Value (PV) terms). On a weighted basis, the investment is expected to deliver approximately \$1.35 million in net market benefits.

E.Table 2 Present value of net benefits relative to the base case, PV \$m 2017/18

Option	Central	Low benefit	High benefit	Weighted NPV
Refurbish Line 8	1.07	-2.76	6.04	1.35

While the estimated net market benefits are marginally negative under the low benefit scenario, TransGrid notes that this scenario is comprised of extreme combinations of assumptions designed to investigate a reasonable lower bound on the expected net market benefits.

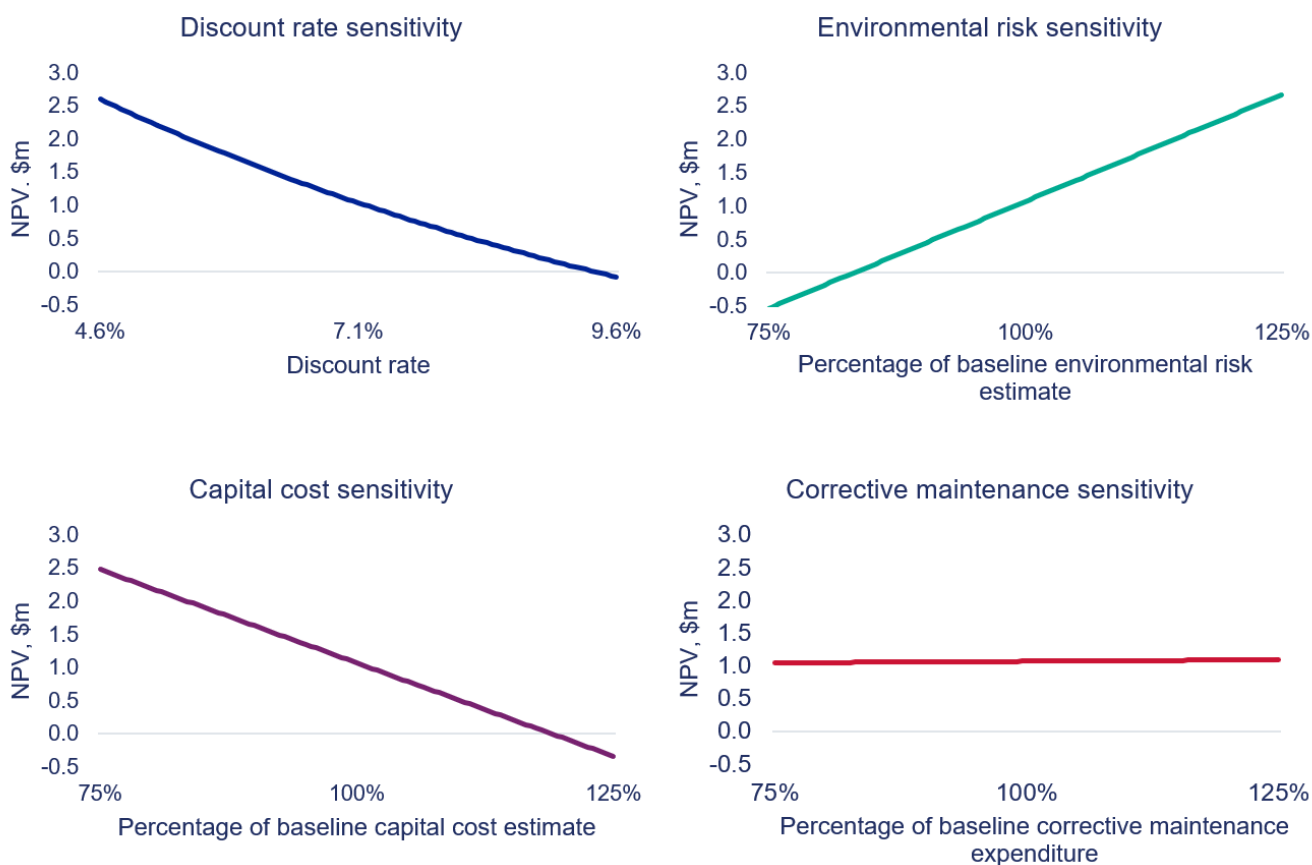
As set out in this PSCR, the failure rates estimate and the consequent costs of associated bushfires for all scenarios, has been assumed to be constant, going forward. Although this approach is considered to be extreme and unrealistic by TransGrid (in reality, failure rates and expected costs would increase going forward if nothing is done, due to further asset deterioration), it has been adopted as a proportionate

approach for this RIT-T and does not change the outcome of the RIT-T in terms of the identified preferred option.

TransGrid has also conducted sensitivity analysis on the overall NPV of the net market benefit to investigate the consequences of ‘getting it wrong’ having committed to a certain investment decision.

The four figures below illustrate the estimated effect on net market benefits for each option, by individually varying four separate key assumptions in the central scenario. The estimated net market benefit of Option 1 across all sensitivity tests is predominately found to be positive.¹

E. Figure 2 Sensitivity testing of Option 1



Draft conclusion and exemption from preparing a PADR

Refurbishing the existing line is the preferred option at this draft stage and involves:

- (1) replacing or refurbishing the identified corroded components, as well as
- (2) removing the asbestos paint.

It is expected that remediation works will be undertaken in various stages between 2018 and 2019 calendar years, with all works completed by 2021. The existing line is already in service and, as such, outages will be planned as necessary to facilitate the completion of the works.

¹ The exceptions to this are the lower sensitivities on the environmental risk and the upper sensitivities on the capital costs. These sensitivities are discussed further in this PSCR.

The estimated capital cost of this option is approximately \$6.1 million. Routine operating and maintenance costs are approximately \$30,000 in 2018/19 (around 1 per cent of the capital expenditure) but are expected to be the same under the base case as these costs relate to planned routine line checks by TransGrid field staff.

The preferred option to refurbish the line reduces the bushfire and safety risks to acceptable levels and this risk reduction outweighs the capital expenditure.

National Electricity Rules (NER) clause 5.16.4(z1) provides for a Transmission Network Service Provider (TNSP) to be exempt from producing a Project Assessment Draft Report (PADR) for a particular RIT-T application, in the following circumstances:

- > if the estimated capital cost of the preferred option is less than \$41 million;
- > if the TNSP identifies in its PSCR its proposed preferred option, together with its reasons for the preferred option and notes that the proposed investment has the benefit of the clause 5.16.4(z1) exemption; and
- > if the TNSP considers that the proposed preferred option and any other credible options in respect of the identified need will not have a material market benefit for the classes of market benefit specified in clause 5.16.1(c)(4), with the exception of market benefits arising from changes in voluntary and involuntary load shedding.

TransGrid considers that its investment in relation to Option 1 is exempt from producing a PADR under NER clause 5.16.4(z1).

In accordance with NER clause 5.16.4(z1)(4), the exemption from producing a PADR will no longer apply if TransGrid considers that an additional credible option that could deliver a material market benefit is identified during the consultation period.

Accordingly, if TransGrid considers that any additional credible options are identified, TransGrid will produce a PADR which includes an NPV assessment of the net market benefit of each additional credible option.

Should TransGrid consider that no additional credible options were identified during the consultation period, TransGrid intends to produce a Project Assessment Conclusions Report (PACR) that addresses all submissions received including any issues in relation to the proposed preferred option raised during the consultation period.²

Submissions and next steps

TransGrid welcomes written submissions on materials contained in this PSCR. Submissions are due on or before 12 December 2018.

Submissions should be emailed to TransGrid's Prescribed Revenue & Pricing team via RIT-TConsultations@transgrid.com.au. In the subject field, please reference "PSCR Line 8 project".

Submissions will be published on the TransGrid website. If you do not want your submission to be made publicly available, please clearly specify this at the time of lodging your submission.

Subject to submissions received on this PSCR, a PACR, including full option analysis, is expected to be published by February 2019.

² In accordance with NER clause 5.16.4(z2).

Contents

1.	Introduction.....	11
1.1	Purpose of this report	11
1.2	How to make a submission and next steps	12
2.	The identified need for this RIT-T	13
2.1	Background to the identified need	13
2.2	Description of the identified need	15
2.3	Assumptions underpinning the identified need	15
3.	Options that meet the identified need.....	20
3.1	Description of the 'base case'.....	20
3.2	Option 1 – Refurbish the existing line but replacing the identified components	20
3.3	Options considered but not progressed	21
3.4	There is not expected to be a material inter-network impact	22
4.	Non-network options.....	24
4.1	Required technical characteristics of non-network options.....	24
5.	Materiality of market benefits.....	26
5.1	Market benefits relating to the wholesale market are not material	26
5.2	All other categories of market benefits are also not material	26
6.	Overview of the assessment approach.....	28
6.1	General overview of the assessment framework	28
6.2	Approach to estimating project costs	28
6.3	Three different 'scenarios' have been modelled to address uncertainty	29
7.	Assessment of credible options.....	30
7.1	Gross benefits estimated.....	30
7.2	Estimated costs	31
7.3	Net market benefits.....	31
7.4	Sensitivity testing	32
8.	Draft conclusion and exemption from preparing a PADR	35
	Appendix A – Compliance checklist	36
	Appendix B – RIT-T process overview.....	38
	Appendix C – Summary of the specific remediation works under Option 1	39

List of Tables

E.Table 1 Summary of the three scenarios investigated	4
E.Table 2 Present value of net benefits relative to the base case, PV \$m 2017/18	5
Table 1 Line 8's identified asset issues and their potential consequences	17
Table 2 Options considered but not progressed.....	21
Table 3 Reasons why non-wholesale market benefit categories are considered immaterial	27
Table 4 Summary of the three scenarios investigated.....	29
Table 5 Present value of gross economic benefits of option 1 relative to the base case, PV \$m	30
Table 6 Present value of costs of option 1 relative to the base case, PV \$m	31
Table 7 Present value of net benefits relative to the base case, PV \$m 2017/18.....	31
Table 8 Transmission Line 8 Option 1 – Remediation works under Option 1	39

List of Figures

E.Figure 1 Breakdown of gross economic benefits relative to the base case, PV \$m	5
E.Figure 2 Sensitivity testing of Option 1	6
Figure 1 Southern New South Wales network.....	13
Figure 2 Examples of corroded elements of Line 8	14
Figure 3 TransGrid's risk cost framework	16
Figure 4 Indication of the relative bushfire consequences of all of TransGrid's lines	18
Figure 5 Breakdown of gross economic benefits Option 1 relative to the base case, PV \$m.....	30
Figure 6 Distribution of optimal project commissioning year for Option 1 under each sensitivity	33
Figure 7 Sensitivity testing of Option 1	34
Figure 8 The RIT-T assessment and consultation process	38

1. Introduction

This Project Specification Consultation Report (PSCR) represents the first step in the application of the Regulatory Investment Test for Transmission (RIT-T) to options for mitigating the risk TransGrid and its ultimate downstream consumers face, in terms of corroding components on one of the key 330 kV transmission lines linking Southern New South Wales with the Wollongong and Sydney load centres (Line 8).

Line 8 was constructed in 1956 and 1962, with many of the 175 transmission structures now experiencing corrosion, including steel towers, insulators, conductor fittings and conductor/earth wire. The line itself traverses through farmland, national park areas and climbs from the coastal plain up the Illawarra Escarpment. Owing to the nature of the terrain traversed by Line 8, the failure of the corroding transmission structures and/or physical conductor drops, presents bushfire risks and safety risks. While these risks have an inherently low probability, the consequences can be catastrophic.

TransGrid routinely assesses the condition and timing for the ultimate replacement of its assets. This is all part of its ongoing asset management processes. Asset health assessments since 2016 have identified a number of corrosion related issues on Line 8 and the plan to refurbish the line by replacing the identified corroding components has been in-place since 2016. An allowance has been made for this work in the 2018-23 Revenue Proposal to the Australian Energy Regulator.

Rule changes to the National Electricity Rules (NER) in July 2017 extended the application of regulatory investment tests to replacement capital expenditure from 18 September 2017 onwards. The application of the RIT-T to replacement expenditure commenced on 18 September 2017, however, all replacement expenditure projects that were 'committed' by 30 January 2018 are exempt.³

While the planning process for replacing the identified components of Line 8 are now well-advanced, the project is not yet 'committed'. Accordingly, TransGrid has initiated this RIT-T to consult on its proposed expenditure related to replacing these assets.

1.1 Purpose of this report

The purpose of this PSCR is to:

- > Set out the reasons why TransGrid proposes that action be undertaken (that is, the 'identified need')
- > Present the option that TransGrid currently considers, addresses the identified need
- > Outline the technical characteristics that non-network solutions would need to provide, whilst outlining how these solutions are unlikely to be able to contribute to meeting the identified need for this RIT-T
- > Allow interested parties to make submissions and provide input to the RIT-T assessment.

The entire RIT-T process is detailed in Appendix B. The next steps for this particular RIT-T assessment are discussed further below.

³ See paragraph 18 of the AER's RIT-T for the definition of a 'committed project'.

1.2 How to make a submission and next steps

TransGrid welcomes written submissions on materials contained in this PSCR. Submissions are due on or before 12 December 2018.

Submissions should be emailed to TransGrid's Prescribed Revenue & Pricing team via RIT-TConsultations@transgrid.com.au. In the subject field, please reference "PSCR Line 8 project".

Submissions will be published on the TransGrid website. If you do not want your submission to be made publicly available, please clearly specify this at the time of lodging your submission.

Subject to submissions received on this PSCR, a Project Assessment Conclusions Report (PACR), including full option analysis, is expected to be published by February 2019.

TransGrid is bound by the *Privacy Act 1988 (Cth)*. In making a submission in response to our consultation process in relation to the Line 8 RIT-T submission, TransGrid will collect and hold your personal information (that is, information about you such as your name, email address, employer and phone number). TransGrid will collect this information for the purpose of receiving your submission and may use your contact details to follow up on your submission. Under the National Electricity Law there are circumstances where TransGrid may be compelled to provide information to the AER. We will advise you should this occur. At the conclusion of the submissions process, all submissions received will be published on the TransGrid website. If you do not wish for your submission to be made publicly available, then please clearly specify this at the time of lodging your submission. Our Privacy Policy sets out our approach to managing your personal information. In particular, it explains how you may seek to access and/or correct the personal information that we hold about you, as well as how to make a complaint about a breach of our obligations under the Privacy Act, and how we will deal with complaints. You can access our Privacy Policy here (<https://www.transgrid.com.au/Pages/Privacy.aspx>).

2. The identified need for this RIT-T

This section outlines the identified need for this RIT-T, as well as the assumptions and data underpinning it. It first sets out useful background information on Line 8 and the assets affected by corrosion.

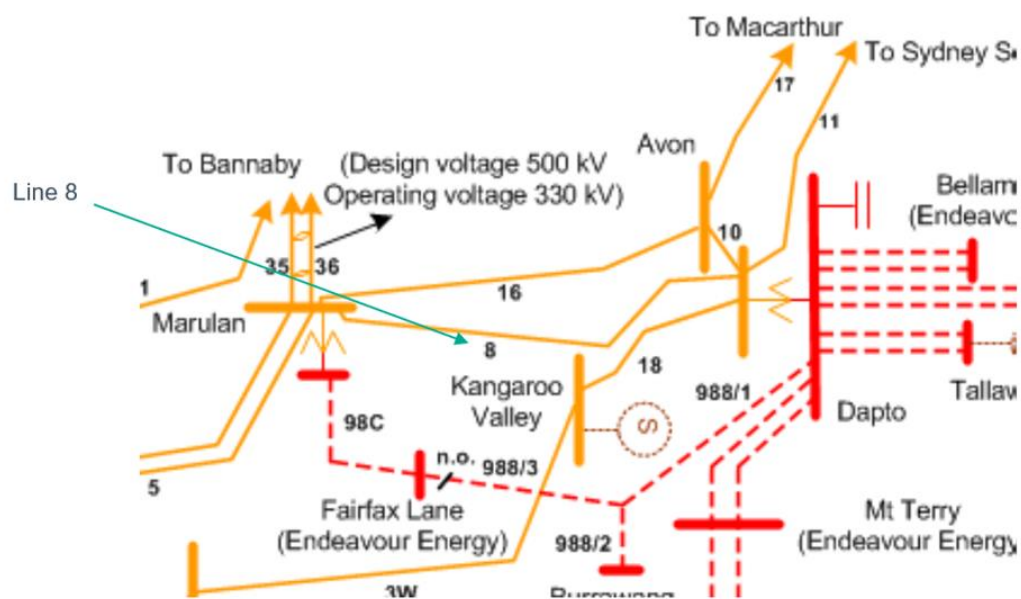
2.1 Background to the identified need

Constructed in 1956 and 1962, Line 8 is a single circuit steel tower 330kV transmission line connecting Marulan and Dapto 330kV substations. Spanning a route of approximately 70 kilometres, the transmission line serves as a key link between Southern New South Wales with the Wollongong and Sydney load centres. The route of the transmission line predominantly consists of farmland and national park areas. However, after leaving Dapto, it climbs from the coastal plain and up the Illawarra Escarpment.

The transmission line is part of the meshed network supplying the southern region of New South Wales, which has N-1 and N-2 redundancies.

The figure below provides an overview of the southern New South Wales network, with Line 8 located in the centre of the figure (and highlighted by a green arrow).

Figure 1 Southern New South Wales network



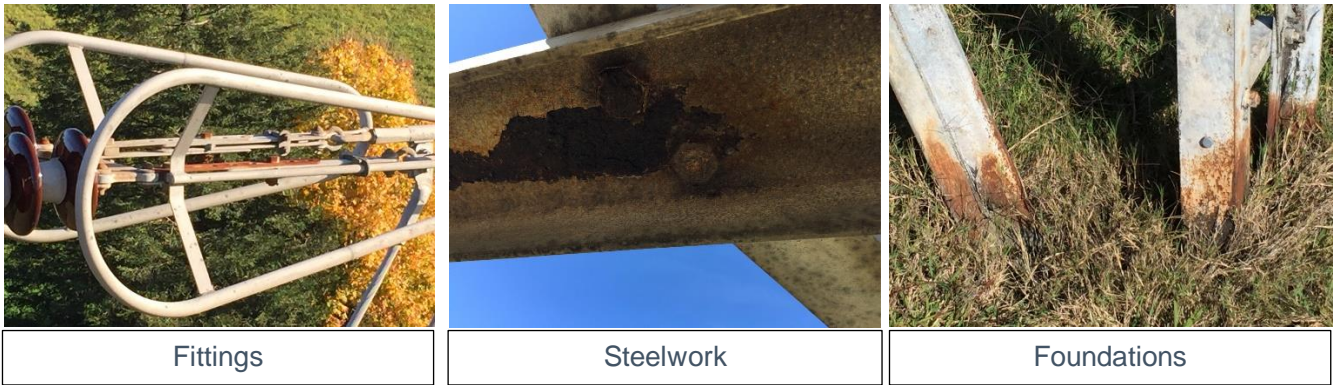
As part of TransGrid's ongoing routine asset monitoring maintenance, it has been identified that many of the 175 transmission structures of Line 8 have condition related issues with corrosion, including steel towers, insulators, conductor fittings and conductor/earth wire.

These steel components were coated during manufacturing, with a sacrificial galvanising layer to protect the steel from corrosion. Over time this galvanising layer has been consumed and now the steel itself is being consumed, accelerating the corrosion process.

With respect to tower footings, the corrosion process has been exacerbated by the use of grillage footings, where the footings are constructed from hot-dip galvanised steel members extending from the tower body which is above ground, as a continuous member below ground, forming a grill which is direct buried. As a result, the footings are not encased in concrete, meaning they are more susceptible to the surrounding soil and associated corrosion consequences.

The figure below provides three photos of corroded elements of Line 8 taken by TransGrid field staff.

Figure 2 Examples of corroded elements of Line 8



Corrosion greatly increases the likelihood of conductor drops and presents consequent bushfire risks and safety risks. While this is the case for any corroded elements in the transmission network, the bushfire risks are exacerbated for Line 8 as the line traverses substantial sections of farmland and national park areas. Consequently, should a conductor drop occur near loose and/or dry vegetation, a bushfire event may ensue.

In addition to the corrosion issues, inspections have also identified 42 structures on Line 8 that are coated with asbestos paint. The vast majority of the paint is restricted to the lower part of the tower legs, however, there are a small number of completely painted towers. The condition of the paint varies across the affected towers, though most towers have been reported to be in average or poor condition. As a result, while the health risks associated with the asbestos paint are currently considered to be low, further deterioration of the assets will lead to the paint de-bonding from the steel and flaking resulting in increased safety risks to TransGrid staff and the broader public..

While the issues set out above (corrosion, grillage foundations and asbestos paint) are all subject to their own remediation programs, in this instance TransGrid views it as prudent to combine the three as they are all present on a single asset – Line 8. As a result, this RIT-T evaluates the combined remediation of all the relevant issues affecting Line 8.

2.2 Description of the identified need

TransGrid manages and mitigates bushfire and safety risk to ensure they are below risk tolerance levels or 'As Low As Reasonably Practicable' ('ALARP'), in accordance with TransGrid's obligations under the New South Wales *Electricity Supply (Safety and Network Management) Regulation 2014* and TransGrid's Electricity Network Safety Management System (ENSMS).⁴

In particular, risks are mitigated unless it is possible to demonstrate that the cost involved in further reducing the risk would be grossly disproportionate to the benefit gained. TransGrid therefore considers this a 'reliability corrective action' under the RIT-T as the proposed investment is for the purpose of meeting service standards linked to an applicable regulatory instrument, ie, the New South Wales *Electricity Supply (Safety and Network Management) Regulation 2014*. A reliability corrective action differs from a 'market benefit' driven RIT-T in that the preferred option is permitted to have negative net market benefits (on account of it being required to meet an externally imposed obligation on the network business).

That said, TransGrid considers that the preferred option for this RIT-T demonstrates positive net market benefits. The approach to determining this and the assessment itself, is presented in this PSCR.

Overall, TransGrid considers that the option proposed in this PSCR will enable TransGrid to appropriately manage the bushfire and safety risks associated with Line 8 going forward.

2.3 Assumptions underpinning the identified need

Failure of the transmission structures and components due to corrosion may result in bushfire and safety risks and forced outages of the line. Further, worsening asset conditions may result in heightened health risks that are associated with asbestos. Given the scale and scope of the required corroded assets, routine maintenance of these assets cannot effectively arrest the deteriorating condition of these assets and more importantly exposes TransGrid field crews to unnecessarily unsafe situations.

The need to undertake investment is predicated on the condition deterioration of the identified assets due to corrosion and the resultant physical asset failures.

As part of its Revenue Proposal preparation for the current regulatory control period, TransGrid developed a Network Asset Risk Assessment Methodology to quantify the risk for replacement and refurbishment projects. In particular, the risk assessment methodology:

- > Uses externally verifiable parameters to calculate asset health and failure consequences
- > Assesses and analyses asset condition to determine remaining life and probability of failure
- > Applies a worst case asset failure consequence and significantly moderates this down to reflect the likely consequence in the particular circumstances
- > Identifies safety and compliance obligations with a linkage to key enterprise risks

This section summarises the key assumptions and data from the risk assessment methodology modelling that underpin the identified need for this RIT-T and the assessment undertaken in the preparing the Revenue Proposal. ⁵ Section 6 provides further details on the general modelling approaches applied, including the commercial discounts rate used.

⁴ TransGrid ENSMS follows the ISO31000 risk management framework which requires following hierarchy of hazard mitigation approach.

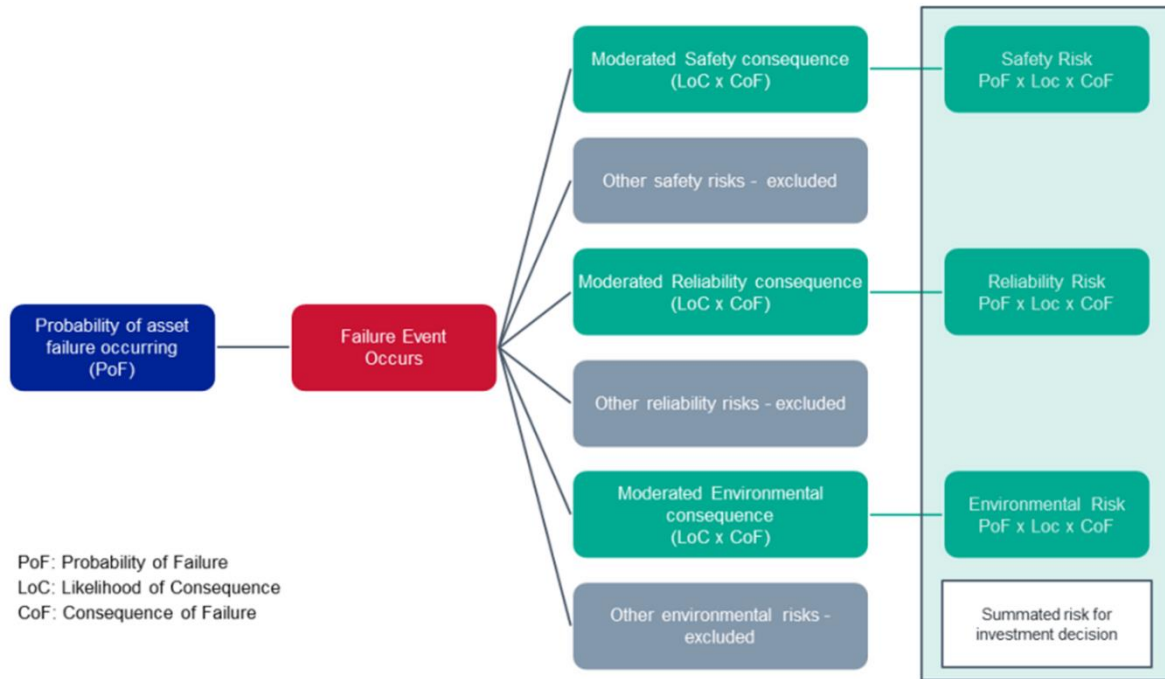
⁵ For additional information on the risk assessment methodology, please refer to pages 63-69 of our Revised Regulatory Proposal for the period 2018-23, available at: <https://www.aer.gov.au/system/files/TransGrid%20-%20Revised%20Revenue%20Proposal%20-%201%20December%202017.pdf>

2.3.1 Overview of how the risks have been assessed

A fundamental part of the risk assessment methodology is the calculation of the ‘risk costs’, ie, the monetised impacts of the reliability, safety, environmental and other risks.

The figure below summarises the framework for calculating the ‘risk cost’, which has been applied across TransGrid’s portfolio of assets, considered to need replacing and/or refurbishing.

Figure 3 TransGrid’s risk cost framework



The ultimate ‘risk costs’ for a project are calculated based on the Probability of a Failure (PoF), the Consequence of Failure (CoF) and the corresponding Likelihood of consequence (LoC) in the particular situation.

In calculating the PoF, each failure mode that could result in a consequential impact is considered. For replacement planning, only ‘life ending’ failures are ultimately used to calculate the risk cost. PoF is calculated for each failure mode considering ‘conditional age’ (chronological age adjusted by asset health), failure and defect history and benchmarking studies. For ‘wear out’ failures, a Weibull curve may be fitted and for random failures a static failure rate may be used.

In calculating the CoF and LoC, TransGrid uses a moderated ‘worst case’ consequence to value risk. This is an accepted approach in risk management with the benefit of ensuring that low probability but high consequence events are not dismissed or overlooked. It also excludes the risk costs of lower consequence but potentially more likely events (the resultant calculated risk is lower than it would be if these were included).

Recognising that this assessment approach has inherent uncertainty built into it, this RIT-T investigates a number of different scenarios and sensitivities that have been designed to see whether assuming alternate assumptions regarding risks and consequences (as well as other variables, such as the discount rate assumed) have an impact on the identification of the preferred option. These are outlined in more detail in sections 6.3 and below with the results, in terms of the effects on net market benefits, presented in section 7.

2.3.2 Line 8 condition issues and their consequences

TransGrid’s asset health assessments since 2016 have identified a number of corrosion related issues on Line 8. The specific issues identified, their cause and their potential consequences are outlined in the table below.

Table 1 Line 8’s identified asset issues and their potential consequences

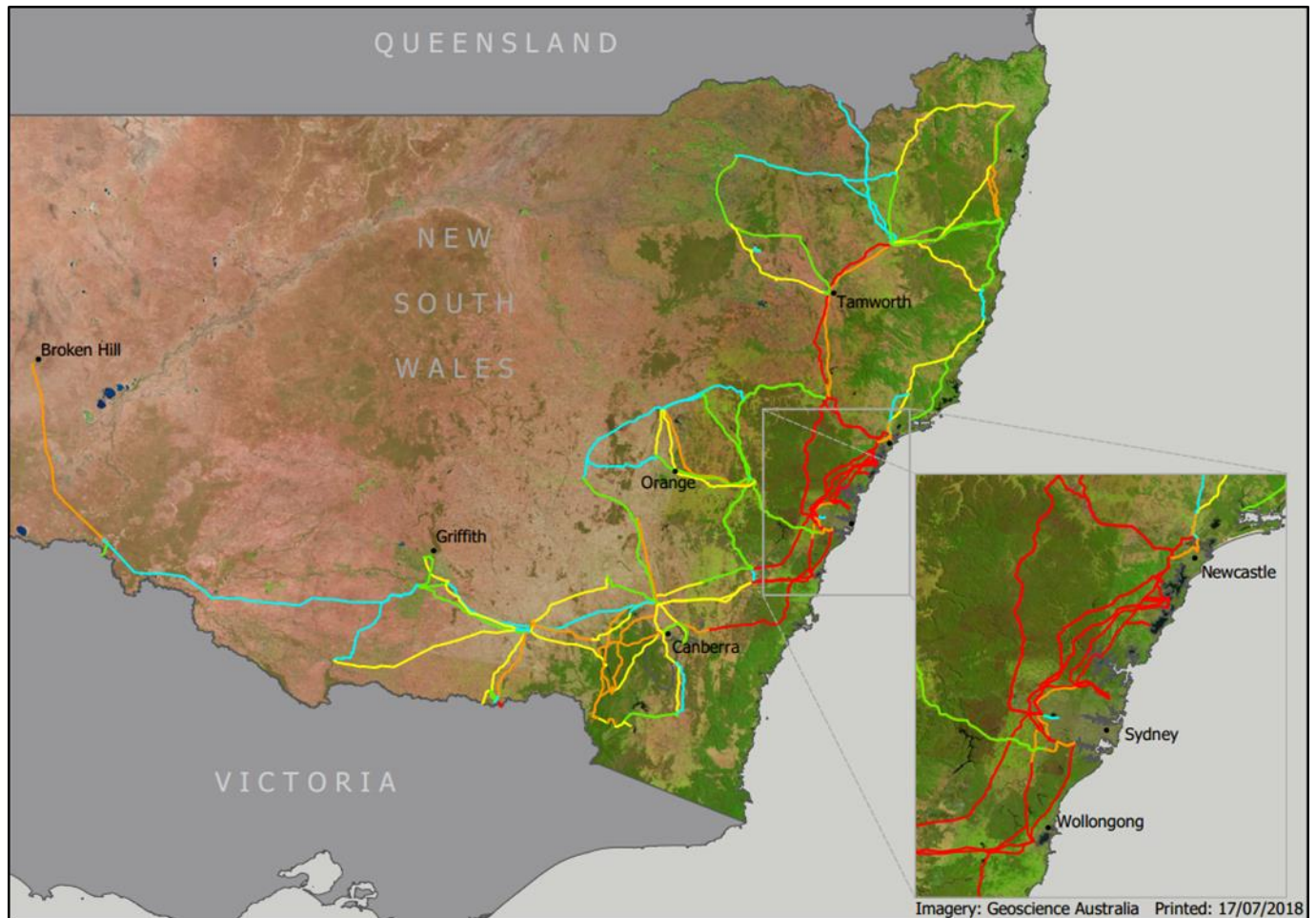
Issue	Cause	Extent (% line)	Quantity/length	Impact
Corroded insulators	Zinc galvanising end of life	66%	286 insulator strings	
Corroded earthwire	Zinc galvanising end of life	5%	4km	Conductor drop
Corrosion of earthwire attachment fittings	Zinc galvanising end of life	5%	21 fittings	
Corroded conductor attachment fittings	Zinc galvanising end of life	5%	33 fittings	
Grillage buried steel corrosion	Zinc galvanising end of life	75%	138 towers	
Corrosion of tower steel members	Zinc galvanising end of life	7%	12 towers	Structural failure
Corroded fasteners	Zinc galvanising end of life	5%	9 towers	
Conductor dampers	Damaged/Weathered	10%	209 dampers	Accelerated conductor fatigue
Asbestos paint	-	25%	42 towers	Safety risks

2.3.3 Avoiding bushfire risks is the most substantial driver of this RIT-T

Structural failure of towers and conductor drops due to corrosion of steel are significant contributors to bushfire and safety risks. Given the line traverses through farmland and national park areas, this poses significant bushfire risks.

The figure below shows a map of total estimated transmission line risk for all of TransGrid’s transmission lines (ie, the PoF multiplied by the CoF and LoC) and, while it includes all risk contributors, bushfire is the general primary driver. It has been developed based on an assessment of risk factors in specific places and shows that Line 8 has one of the highest estimated risks in comparison to all other lines.

Figure 4 Indication of the relative asset risk for all of TransGrid's lines



TransGrid has calculated the total risk cost if nothing is done to address the asset condition issues on Line 8 to be approximately \$1.3 million per year, which is predominantly made up of a bushfire risk.⁶

If nothing is actively done to resolve these risks, the condition of the line is expected to continue to deteriorate and the number of defects will likely grow over time as the line ages. This will increase the probability of asset failure and results in the aforementioned expected cost of \$1.3 million, increasing over time.

While noting this escalating risk going forward, TransGrid has simply modelled a constant \$1.3 million of risk cost for each subsequent future years. This effectively assumes that the failure rates, and consequent costs associated bushfires to be constant going forward. This approach is considered extreme and unrealistic by TransGrid (in reality, failure rates and expected costs would increase going forward if nothing is done, as the assets further deteriorate) but has been adopted as a proportionate approach for this RIT-T (in particular, estimating escalating failure rates to a higher degree of detail will not change the outcome of the RIT-T in terms of the identified preferred option).

In addition, the economic assessment shown in this PSCR demonstrates that there are strong net market benefits from refurbishing the line under this conservative assumption, even under the 25 per cent lower avoided cost of bushfires assumptions (as shown in section 7 below). In fact, the assessment in section 7

⁶ This determination of per annum risk cost is based on TransGrid's Network Asset Risk Assessment Methodology and incorporates variables such as likelihood of failure/exposure, various types of consequence costs and corresponding likelihood of occurrence.

below shows that the assumed bushfire risks would need to be approximately 18 per cent *lower* than the central estimates to result in no net market benefits from refurbishing the line.

TransGrid considers it unlikely that the bushfire risk costs are overestimated and that the investment option proposed in this PSCR is unjustified, particularly in light of the conservative assumption of future yearly risk each year being constant. Moreover, TransGrid considers that the assumptions used and approach taken, in this PSCR confirm that this investment is required to comply with the ALARP obligations under the New South Wales *Electricity Supply (Safety and Network Management) Regulation 2014*.

3. Options that meet the identified need

TransGrid considers that there is only one feasible option from a technological and project delivery perspective, ie, replacing or refurbishing the identified corroded components, as well as removing the asbestos paint, in one stage.

This section provides more information on the scope for this option. It also outlines the options considered but not progressed and how Option 1 is not expected to have a material inter-network impact.

Option 1 below is considered to be both technically and commercially feasible and is able to be implemented in sufficient time, to meet the identified need.⁷ In addition, all works under this option is assumed to be completed in accordance with the relevant standards and the components shall be replaced with the objective of minimal modification, to the wider transmission assets.

3.1 Description of the 'base case'

Consistent with the RIT-T, the assessment undertaken in this PSCR compares the costs and benefits of the option to a base case 'do nothing' option.

Under this base case, the existing condition issues associated with the line will not be remediated and Line 8 will continue to operate, with an increasing risk level. Specifically, the base case considers no investment in the network asset other than continuing the maintenance regime.

3.2 Option 1 – Refurbish the existing line but replacing the identified components

This option involves the remediation of Line 8 to address its asset condition issues set out above. This scope of the refurbishment includes replacement of asset components, steelwork and foundation remediation and asbestos paint removal. By undertaking the remediation works, TransGrid anticipates that the life of the asset will be extended by approximately 20 years.

It is expected that this remediation works will be undertaken between 2018/19 and 2020/21. The two broad stages to replacing all corroded elements are:

- > Stage 1 (2018/19 and 2019/20) – Planning and procurement (including completion of the RIT-T); and
- > Stage 2 (2020/21) – Project delivery and construction.

While physical delivery and replacement of the identified assets is planned to occur over 2020/21, it will be delivered in a staged fashion over the course of the year with replacement targeted on asset condition.⁸ All work is expected to be completed in 2020/21.

The existing line is already in service and as such, outages will be need to be planned as necessary to facilitate the completion of the works.

The estimated capital cost of this option is approximately \$6.1 million. Routine operating and maintenance costs are approximately \$30,000 in 2018/19 but are expected to be the same under the base case as these costs relate to planned routine checks of the line by TransGrid field staff.

Option 1 reduces the bushfire and safety risks to acceptable levels and this risk reduction outweighs the capital expenditure. The results of this assessment are shown in section 7 below.

⁷ In accordance with the requirements of NER clause 5.15.2(a).

⁸ Appendix C provides a breakdown of the specific remediation measures included in this option, by issue.

While Option 1 is the only feasible option from a technological and project delivery perspective, we have investigated alternate timings for delivery (as illustrated in section 7.4.1). This assessment has confirmed that the optimal commissioning of Option 1 is as soon as possible.

3.3 Options considered but not progressed

TransGrid has also considered whether there are other credible options that would meet the identified need. However, the identified need to address bushfire and safety risks associated with corroding components of an otherwise perfectly functional transmission line and so it does not lend itself to other technological solutions other than to replace these components as the only technically and economically feasible option.

The table below summarises three other options TransGrid has considered as part of this RIT-T and its earlier asset condition and replacement planning. The table also outlines the reasons why these options were not progressed any further and have not been explicitly modelled alongside Option 1.

Table 2 Options considered but not progressed

Option	Reason(s) for not progressing
Stage the delivery of Option 1 over multiple years	There are cost efficiencies associated with replacing all identified components in one year, as opposed to spreading this replacement out over more than one year. In addition, delaying the replacement of any components comes with a greater expected risk value. The combination of greater costs and less expected benefits (in terms of avoided risk costs) has led TransGrid to consider this option commercially infeasible relative to Option 1 and so it has not been progressed.
Replacing Line 8	The option of replacing the entire line, as opposed to just the corroded components, is estimated to have a capital cost in the order of \$67 million. This cost is significantly more than Option 1 (more than 10 times greater) and is not expected to provide any additional market benefits. In addition, the condition of other components that make up Line 8 is such that they do not require replacing in the coming years.

Option	Reason(s) for not progressing
Decommissioning and dismantling the line, and procure a non-network solution (or solutions)	<p>TransGrid have considered the option of decommissioning and dismantling Line 8 and procuring non-network solutions to provide the requisite level of reliability to electricity consumers.</p> <p>Decommissioning and dismantling of Line 8 involves physical disconnection of the transmission line from the 330 kV switchbays at Dapto and Marulan substations respectively. In addition, the dismantling of transmission line structures, fittings and conductors is required and rehabilitation of the easement.</p> <p>This work is required as TransGrid is responsible for maintaining its asset portfolio in a safe manner so that safety risks to workers, public, environment including bushfire, and its own and public properties are managed. De-energising Line 8 without dismantling it would leave the line unmonitored, which is not a prudent asset management practice as the condition of the de-energised line will remain unknown and the chances of an asset in this circumstance creating safety hazards are high and increasing.</p> <p>The direct decommissioning cost is estimated to be around \$18 million (depending on access and clearing costs), which significantly more than Option 1 and is not expected to provide any additional market benefits.</p> <p>In addition, TransGrid would need to procure significant quantities of non-network technologies to ensure compliance with the New South Wales transmission reliability standards, which would further increase the cost of this option. This is discussed further in section 4 below.</p>

In addition, as set out in section 4 below, TransGrid does not consider that non-network solutions can address, nor help address, the identified need to undertake network investment. This is driven by the fact that the identified need is centred on reducing bushfire and safety risks, as opposed to reducing expected unserved energy. In other words, the identified need underlying the refurbishment is not driven by demand and, as such, non-network solutions appear unable to address the identified need.

While TransGrid has not been able to identify a non-network option that is capable of addressing the safety and bushfire risks that are key drivers for this project, TransGrid remains open to considering credible non-network options that will reduce the safety and bushfire risks.

3.4 Inter-network impact is not expected to be material

TransGrid has considered whether Option 1 is expected to have a material inter-regional impact.⁹

A 'material inter-network impact' is defined in the NER as:

“A material impact on another Transmission Network Service Provider’s network, which may include (without limitation): (a) the imposition of power transfer constraints within another Transmission Network Service Provider’s network; or (b) an adverse impact on the quality of supply in another Transmission Network Service Provider’s network.”

⁹ In accordance with NER clause 5.16.4(b)(6)(ii).

AEMO's suggested screening test to indicate that a transmission augmentation has no material inter-network impact is that it satisfies the following:¹⁰

- > a decrease in power transfer capability between the transmission networks or in another TNSP's network of no more than the minimum of 3 per cent of the maximum transfer capability and 50 MW;
- > an increase in power transfer capability between transmission networks of no more than the minimum of 3 per cent of the maximum transfer capability and 50 MW;
- > an increase in fault level by less than 10 MVA at any substation in another TNSP's network; and
- > the investment does not involve either a series capacitor or modification in the vicinity of an existing series capacitor.

TransGrid notes that Option 1 does not involve either a series capacitor or modification in the vicinity of an existing series capacitor. Option 1 is not expected to result in change in power transfer capability between New South Wales and neighbouring transmission networks. In addition fault levels are not expected to increase at any substation in another TNSP's network.

As a consequence, by reference to AEMO's screening criteria, there are no material inter-network impacts associated with Option 1.

¹⁰ The screening test is set out in Appendix 3 of the Inter-Regional Planning Committee's Final Determination: Criteria for Assessing Material Inter-Network Impact of Transmission Augmentations, Version 1.3, October 2004.

4. Non-network options

TransGrid does not consider that non-network solutions can assist with meeting the identified need for this RIT-T. This is driven by the fact that the network investment proposed in Option 1 is targeted at reducing the risk of bushfires occurring from physical failure of elements of Line 8 (as opposed to reducing expected unserved energy), as well as the safety risks associated with asbestos. As a result, the identified need is not driven by demand. Further, the relatively low overall cost of refurbishing the line (ie, \$6.1 million in capital cost to replace all identified components), limits the viability of non-network options.

Notwithstanding, this section sets out the required technical characteristics for non-network options, consistent with the requirements of the RIT-T.

4.1 Required technical characteristics of non-network options

Line 8 forms part of the meshed network supplying Sydney, which has N-1 and N-2 redundancies, and so unserved energy is not a key driver for this RIT-T (in fact, it is expected to be immaterial under the base case and so has not been estimated).

TransGrid and AEMO are required by the NER to operate the power system securely.¹¹ This means that at all times, the power system must be operated such that it will remain within safe and stable limits following any single credible contingency event.¹² Following any contingency event, AEMO is required to take action to return the power system to a secure operating state as soon as practical and in any case, within 30 minutes.¹³

Analysis of the transmission network in the absence of Line 8 was completed to assess the ability to operate the power system securely. The analysis showed that the decommissioning of line 8 will lead to the overloading of the network under a N-1 contingency. Depending on the load and network conditions at the time, the impact to the cut-set capability may be up to 400MW, which would need to be met by non-network solutions.

As outlined in section 3.3 above, TransGrid has considered the option of decommissioning and dismantling Line 8, which would also require the procurement of non-network solutions to ensure reliable supply to end consumers during any such contingency events.

TransGrid therefore estimates that, as part of a wider decommissioning option, non-network solutions would need to:

- > reduce peak load by potentially 400MW to return the power system to a secure state;
- > this load reduction would need to be in the general Sydney area;¹⁴ and
- > be available to operate on very short-notice (within 30 minutes), operate effectively and continuously to provide this level of support until such time the contingency is returned to service.

However, in light of the significant direct capital costs associated with decommissioning Line 8 (expected to be in the order of \$18 million, which is approximately three times the capital cost of Option 1), TransGrid has not pursued this option further. Any non-network solution is expected to only add to the costs of this option.

¹¹ Secure operation of the power system refers to operation within safe and stable limits; see NER Clauses 4.2.4, 4.2.2 and 4.2.5 for further details

¹² A single credible contingency event includes a trip of any generator, transmission line, power transformer or item of reactive plant

¹³ NER Clause 4.2.6

¹⁴ Since there are a range of key asset-outages/contingencies that Line 8 currently prevents from resulting in unserved energy, it is not possible to provide a more accurate location as the specific location(s) affected would depend on the specific contingencies.

In summary, TransGrid consider that non-network options are unable to contribute to meeting the identified need for this RIT-T – this is based on:

- > the fact that the identified need for this investment is not driven by avoiding potential unserved energy, no amount of demand reduction would defer or avoid the preferred network option; and
- > while non-network options could technically form part of a wider decommissioning option, this option has been ruled out on the account of the significant associated costs and the fact that vast majority of Line 8's components are such that they do not require replacing in coming years.

5. Materiality of market benefits

The section outlines the categories of market benefits prescribed in the NER and whether they are considered material for this RIT-T.¹⁵

5.1 Market benefits relating to the wholesale market are not material

The AER has recognised that if the credible options considered will not have an impact on the wholesale market, then a number of classes of market benefits will not be material in the RIT-T assessment and so do not need to be estimated.¹⁶

Option 1 outlined above does not address network constraints between competing generating centres and are therefore not expected to result in any change in dispatch outcomes and wholesale market prices.

TransGrid therefore considers that the following classes of market benefits are not material for this RIT-T assessment:

- > changes in fuel consumption arising through different patterns of generation dispatch;
- > changes in voluntary load curtailment (since there is no impact on pool price);
- > changes in costs for parties, other than for TransGrid (since there will be no deferral of generation investment);
- > changes in ancillary services costs;
- > competition benefits; and
- > Renewable Energy Target (RET) penalties.

5.2 All other categories of market benefits are also not material

In addition to the classes of market benefits listed above, NER clause 5.16.1(c)(4) requires TransGrid to consider the following classes of market benefits in relation to each credible option: changes in involuntary load curtailment; differences in the timing of transmission investment; option value; and changes in network losses.

TransGrid considers that none of the four classes of market benefits listed above are material for this RIT-T assessment for the reasons set out below.

¹⁵ The NER requires that all categories of market benefit identified in relation to the RIT-T are included in the RIT-T assessment, unless the TNSP can demonstrate that a specific category (or categories) is unlikely to be material in relation to the RIT-T assessment for a specific option – NER clause 5.16.1(c)(6). Under NER clause 5.16.4(b)(6)(iii), the PSCR should set out the classes of market benefit that the NSP considers are not likely to be material for a particular RIT-T assessment.

¹⁶ AER, *Final Regulatory Investment Test for Transmission Application Guidelines*, 18 September 2017, pp. 13-14.

Table 3 Reasons why non-wholesale market benefit categories are considered immaterial

Market benefits	Reason
Changes in in involuntary load curtailment	Line 8 forms part of the meshed network supplying Sydney, which is required to have N-1 and N-2 redundancies. As a consequence, if Line 8 fails due to the corroded assets, there is an extremely low chance of this resulting in unserved energy. As outlined in section 2 above, this RIT-T is not being undertaken to avoid expected unserved energy from corroded assets but instead to mitigate the risk of bushfires.
Differences in the timing of expenditure	Option 1 is being undertaken to mitigate rising risk due to deteriorating asset condition and as the line is an existing asset, material market benefits will neither be gained nor lost due to timing of expenditure.
Option value	<p>TransGrid notes the AER’s view that Option Value is likely to arise where there is uncertainty regarding future outcomes, the information that is available in the future is likely to change and the credible options considered by the TNSP are sufficiently flexible to respond to that change.¹⁷</p> <p>TransGrid also notes the AER’s view that appropriate identification of credible options and reasonable scenarios captures any Option Value, thereby meeting the NER requirement to consider option value as a class of market benefit under the RIT-T.</p> <p>TransGrid notes that changes in future demand levels are not relevant for this RIT-T, since the need for and timing of the required investment is being driven by asset condition rather than future demand growth. As a result, it is not relevant to consider different future demand scenarios in undertaking the RIT-T analysis.</p> <p>The estimation of any option value benefit would require a significant modelling assessment, which would be disproportionate to any additional option value benefit that may be identified for this specific RIT-T assessment. Therefore, TransGrid has not estimated any additional option value market benefit for this RIT-T assessment.</p>
Changes in network losses	As there is no change to the capacity of the line or the destination of the line under Option 1, there will not be any material market benefits associated with changes to network losses.

¹⁷ AER, *Final Regulatory Investment Test for Transmission Application Guidelines*, 18 September 2017, pp. 37 & 74.

6. Overview of the assessment approach

This section outlines the approach that TransGrid has applied in assessing the net market benefits associated with refurbishing Line 8.

6.1 General overview of the assessment framework

As outlined in section 3.1, all costs and benefits for Option 1 have been measured against a base case where TransGrid is assumed to incur regular and reactive maintenance activities going forward as well as the cost of any bushfires that are caused by the corroded equipment resulting in a physical failure (eg, a conductor drop).

The RIT-T analysis has been undertaken over a 20-year period, from 2018/19 to 2038/39. TransGrid considers that a 20-year period takes into account the size, complexity and expected life of the refurbishment option to provide a reasonable indication of the benefits and costs for this option. While the capital cost of the new components under Option 1 have asset lives greater than 20 years, TransGrid has taken a terminal value approach to incorporate capital costs in the assessment, which ensures that the capital cost of long-lived assets is appropriately captured in the 20-year assessment period.

TransGrid has adopted a central real, pre-tax 'commercial'¹⁸ discount rate of 7.04 per cent as the central assumption for the NPV analysis presented in this report. TransGrid considers that this is a reasonable contemporary approximation of a commercial discount rate, consistent with the RIT-T.

TransGrid has also tested the sensitivity of the results to changes in this discount rate assumption and specifically to the adoption of a lower bound real, pre-tax discount rate of 4.60 per cent (equal to the latest AER Final Decision for a TNSP's regulatory proposal at the time of preparing this PSCR¹⁹), and an upper bound discount rate of 9.48 per cent (ie, a symmetrical adjustment upwards).

6.2 Approach to estimating project costs

TransGrid has estimated the capital costs of the refurbishment option by considering the scope of works necessary in conjunction with costing experience from previous projects of a similar nature. TransGrid considers the central capital cost estimate of approximately \$6.1 million is estimated within +/- 25 per cent of the actual cost.

Routine operating and maintenance cost are expected to be approximately \$30,000/annum in 2018/19 but are expected to be the same under the base case as these costs relate to planned routine checks of the line by TransGrid field staff.

Reactive maintenance costs under the base cost have been estimated by considering both the:

- > level of reactive maintenance required to restore assets to working order following a physical failure; and
- > probability and expected level of network asset faults, which translates to the level of corrective maintenance costs.

All options reduce the incidence of asset failures relative to the base case, and hence the expected operating and maintenance costs associated with restoring supply.

¹⁸ The use of a 'commercial' discount rate is consistent with the RIT-T and is distinct from the regulated cost of capital (or 'WACC') that applies to network businesses like TransGrid.

¹⁹ See TransGrid's PTRM for the 2018-23 period, available at: <https://www.aer.gov.au/networks-pipelines/determinations-access-arrangements/transgrid-determination-2018-23>

6.3 Three different ‘scenarios’ have been modelled to address uncertainty

RIT-T assessments are required to be based on cost-benefit analysis that includes an assessment of ‘reasonable scenarios’, which are designed to test alternate sets of key assumptions and whether they affect identification of the preferred option.

TransGrid has constructed three alternative scenarios for this PSCR assessment – namely:

- > a ‘low benefit’ scenario, involving a number of assumptions that give rise to a lower bound NPV estimate for the refurbishment option, in order to represent a conservative future state of the world with respect to potential market benefits that could be realised;
- > a ‘central’ scenario, which consists of assumptions that reflect TransGrid’s central set of variable estimates which, in TransGrid’s opinion, provides the most likely scenario; and
- > a ‘high benefit’ scenario – this scenario reflects an optimistic set of assumptions, which have been selected to investigate an upper bound on reasonably expected market benefits.

A summary of the key variables in each scenario is provided in the table below.

Table 4 Summary of the three scenarios investigated

Variable / Scenario	Central	Low benefits	High benefits
Network capital costs	Base estimate	Base estimate + 25%	Base estimate - 25%
Avoided bushfire risk	Base estimate	Base estimate - 25%	Base estimate + 25%
Avoided corrective maintenance	Base estimate	Base estimate - 25%	Base estimate + 25%
Discount rate	7.04 per cent	9.48 per cent	4.60 per cent

The three scenarios do not involve different assumptions about load forecasts (or the VCR) for this RIT-T as avoided unserved energy is expected to be immaterial and the wider identified need is not affected by demand (or the value consumers place on it).

TransGrid considers that the central scenario is the most likely, since it is based primarily on a set of expected/central assumptions. TransGrid has therefore assigned this scenario a weighting of 50 per cent, with the other two scenarios being weighted equally with 25 per cent each. However, TransGrid notes that, on account of their only being one credible option, the identification of the preferred option is the same across all three scenarios, ie, the result is insensitive to the assumed scenario weights.

7. Assessment of credible options

This section outlines the assessment TransGrid has undertaken of the credible network option.

The assessment compares the costs and benefits of the option to a base case 'do nothing' option, where the existing condition issues associated with the line will not be remediated and Line 8 will continue to operate, with an increasing risk level.

7.1 Gross benefits estimated

The table below summarises the gross benefit estimated for Option 1 relative to the 'do nothing' base case in present value terms. The gross benefit has been calculated for each of the three reasonable scenarios outlined in the section above.

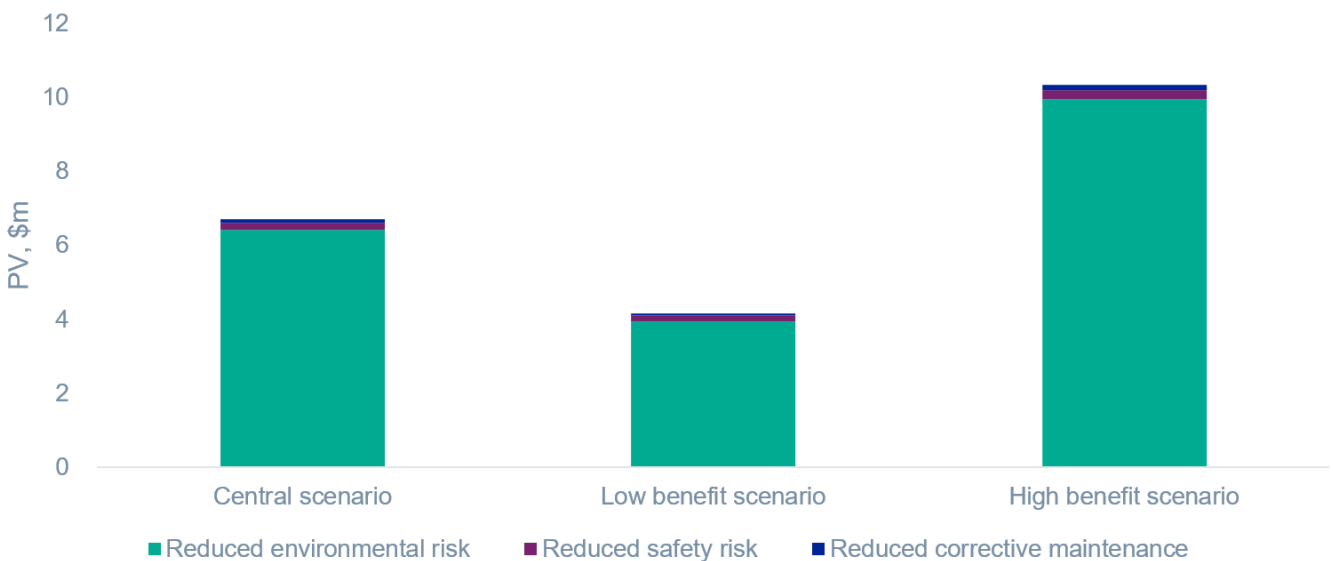
While TransGrid considers there are no material 'market benefits' under the RIT-T for this assessment (as outlined in section 5), there are significant benefits in terms of avoided expected costs, ie, costs associated with bushfires. All of these costs are *expected* costs in that the actual cost (if an event occurs) has been multiplied by the chance of it occurring. The 'low' and 'high' scenarios reflect lower and upper bounds on TransGrid's expectations regarding these expected benefits.

Table 5 Present value of gross economic benefits of option 1 relative to the base case, PV \$m

Option/scenario	Central	Low benefit	High benefit	Weighted
<i>Scenario weighting</i>	50%	25%	25%	
Option 1	6.70	4.17	10.32	6.97

The figure below provides a breakdown of benefits estimated for Option 1, showing almost all of the benefits for each option are derived from avoided risk of bushfires (ie, 'environmental risk'), while other avoided costs contribute relatively small amounts to overall gross benefits.

Figure 5 Breakdown of gross economic benefits Option 1 relative to the base case, PV \$m



7.2 Estimated costs

The table below summarises the costs of Option 1, relative to the base case, in present value terms. The cost of Option 1 has been calculated for each of the three reasonable scenarios.

Table 6 Present value of costs of option 1 relative to the base case, PV \$m

Option/scenario	Central	Low benefit	High benefit	Weighted
<i>Scenario weighting</i>	50%	25%	25%	
Option 1	-5.63	-6.93	-4.28	-5.62

7.3 Net market benefits

The table below summaries the net market benefit in NPV terms for Option 1 across the three scenarios, as well as on a weighted basis. The net market benefit is the gross benefits (as set out in section 6.1 above) minus the costs (as outlined in section 6.2 above), all in present value terms.

The table shows that Option 1 is found to have positive net market benefits for all scenarios investigated, excluding the low benefit scenario which is found to be marginally negative (approximately -\$2.76 million in PV terms). On a weighted basis, Option 1 is expected to deliver approximately \$1.35 million in net market benefits.

Table 7 Present value of net benefits relative to the base case, PV \$m 2017/18

Option	Central	Low benefit	High benefit	Weighted NPV
Option 1	1.07	-2.76	6.04	1.35

While the estimated net market benefits are marginally negative under the low benefit scenario, TransGrid notes that this scenario is comprised of an extreme combinations of assumptions designed to investigate a reasonable lower bound on the expected net market benefits. The assumptions feeding into the low scenario include:

- > 25 per cent higher network capital costs;
- > a discount rate of 9.48 per cent;
- > 25 per cent lower expected environmental risks; and
- > 25 per cent lower avoided corrective maintenance costs.

In addition, as set out in section 2 above, the approach taken to estimating failure rates, and consequent costs associated bushfires, has been to assume that this is constant going forward. This approach is considered extreme and unrealistic by TransGrid (as, in reality, failure rates and expected costs would increase going forward if nothing is done as the assets deteriorate further) but has been adopted as a proportionate approach for this RIT-T (in particular will not change the outcome of the RIT-T in terms of the identified preferred option).

7.4 Sensitivity testing

TransGrid has undertaken thorough sensitivity testing exercise to understand the robustness of the RIT-T assessment to underlying assumptions about key variables.

In particular, we have undertaken two sets of sensitivity tests – namely:

- > step 1 – testing the sensitivity of the optimal timing of the project ('trigger year') to different assumptions in relation to key variables; and
- > step 2 – once a trigger year has been determined, testing the sensitivity of the total NPV benefit associated with the investment proceeding in that year, in the event that actual circumstances turn out to be different.

TransGrid has therefore undertaken sensitivity analysis to first determine the optimal timing of the project, to conclude that a particular year represents the 'most likely' date at which the project will be needed.

Having assumed to have committed to the project by this date, TransGrid has also looked at the consequences of 'getting it wrong' under step 2 of the sensitivity testing. That is, if expected bushfire risks are not as high as expected, for example, what would be the impact on the net market benefit associated with the project continuing to go ahead on that date.

We outline how each of these two steps have been applied to test the sensitivity of the key findings below.

7.4.1 Step 1 – Sensitivity testing of the assumed optimal timing for the credible option

TransGrid has estimated the optimal timing for Option 1 based on the year in which the NPV is maximised. This process was undertaken for both the central set of assumptions and also a range of alternative assumptions for key variables.

This section outlines the sensitivity of the identification of the commissioning year to changes in the underlying assumptions. In particular, the optimal timing of the option is found to be invariant to the assumptions of:

- > a 25 per cent increase/decrease in the assumed network capital costs;
- > lower discount rate of 4.60 per cent as well as a higher rate of 9.48 per cent;
- > lower (or higher) assumed environmental (ie, bushfire) risk; and
- > lower (or higher) benefits associated with avoided corrective maintenance costs.

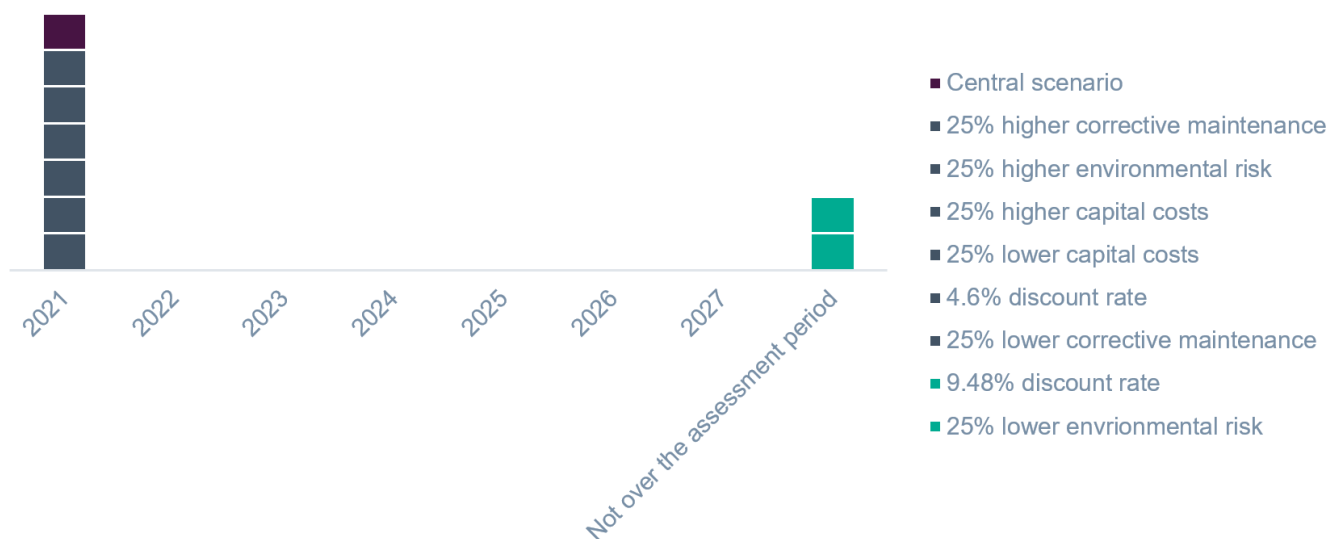
No sensitivity tests have been undertaken on load forecasts (or the VCR) for this RIT-T as avoided unserved energy is expected to be immaterial and the wider identified need is not affected by demand (or the value consumers place on it).

The figure below outlines the impact on the optimal commissioning year, under a range of alternative assumptions. It illustrates that for Option 1, the optimal commissioning date is found to be in 2020/21 for all of the sensitivities investigated, aside from 25 per cent lower environmental risk and a higher commercial discount rate.

TransGrid has not given a high weighting to the 25 per cent lower environmental risk and a higher commercial discount rate sensitivities in light of the conservative underlying assumption regarding a constant risk cost going forward (ie, as opposed to a more realistic escalating risk cost as the assets deteriorate further, as discussed in section 2.3.3 above).

Moreover, TransGrid considers that the sensitivity assessment below demonstrates that planning for any commissioning later than 2020/21 would be inconsistent with the ALARP obligations under the New South Wales *Electricity Supply (Safety and Network Management) Regulation 2014*. In particular, there would be lower net market benefits (due to higher risk cost associated with bushfire risk) if the replacement works were delayed.

Figure 6 Distribution of optimal project commissioning year for Option 1 under each sensitivity



7.4.2 Step 2 – Sensitivity of the overall net market benefit

TransGrid has also conducted sensitivity analysis on the overall NPV of the net market benefit, based on the optimal option timing established in step 1.

Specifically, TransGrid has investigated the same sensitivities under this second step as in the first step, ie:

- > a 25 per cent increase/decrease in the assumed network capital costs;
- > lower discount rate of 4.60 per cent as well as a higher rate of 9.48 per cent;
- > lower (or higher) assumed environmental (ie, bushfire) risk; and
- > lower (or higher) benefits associated with avoided corrective maintenance costs.

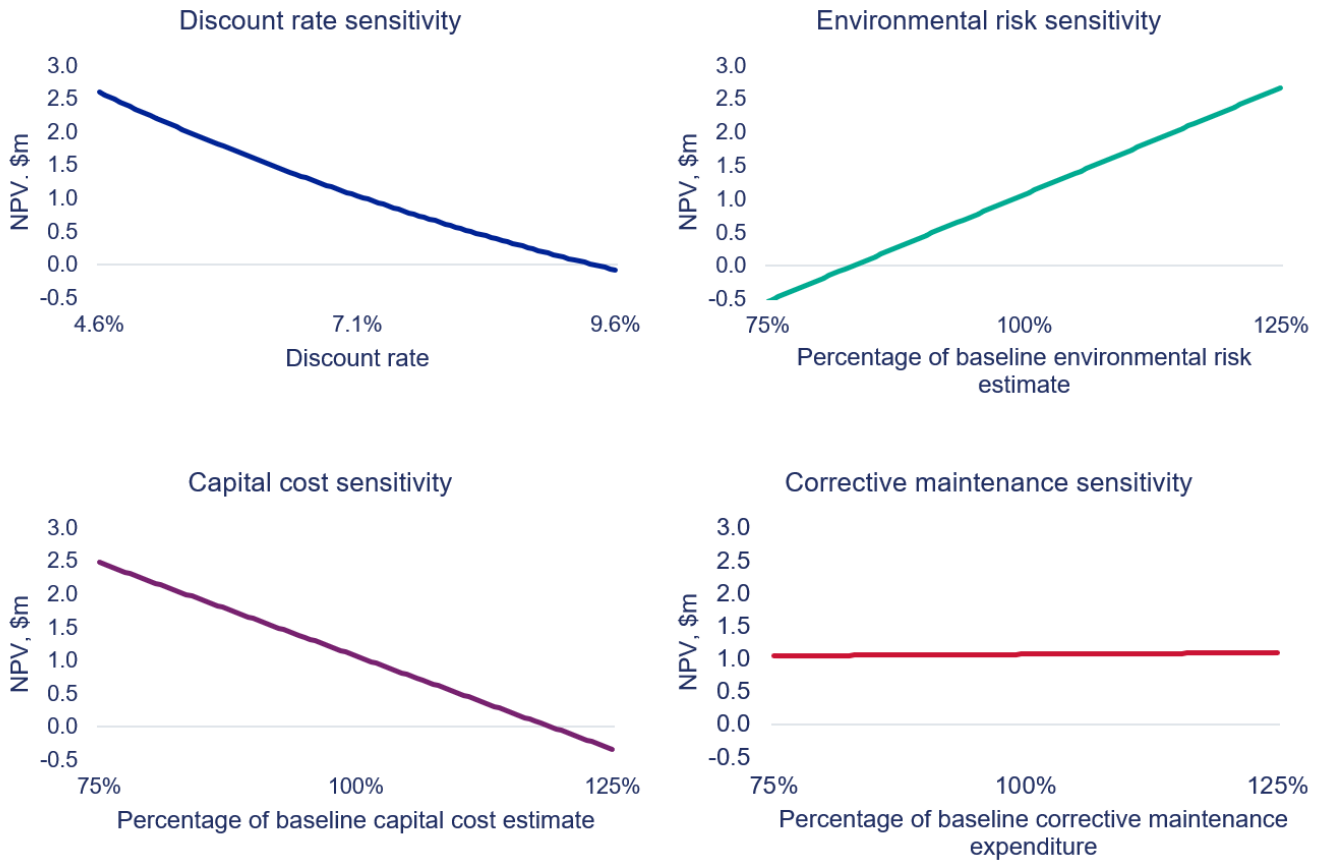
All these sensitivities investigate the consequences of ‘getting it wrong’ having committed to a certain investment decision.

The four figures below illustrate the estimated net market benefits for each option if we vary four separate key assumptions in the central scenario individually. Importantly, for all sensitivity tests shown below, the estimated net market benefit of Option 1 are predominately found to be positive, with the exception of the lower and upper bounds in some circumstances.

The results are found to be most sensitive to the assumed environmental (bushfire) risk avoided. We have extended this sensitivity exercise and found that there would need to be an approximate 18 per cent reduction in the central avoided environmental risk estimate to result in no net market benefits (ie, a NPV of zero), holding all else constant.

TransGrid considers it unlikely that the bushfire risk costs are overestimated by this amount and that, consequently, Option 1 is unjustified, particularly in light of the conservative assumption of constant risk each year going forward (as discussed in section 2.3.3 above). Moreover, TransGrid considers that the assumptions used, and approach taken, in this PSCR confirm that this investment is required to comply with the ALARP obligations under the New South Wales *Electricity Supply (Safety and Network Management) Regulation 2014*.

Figure 7 Sensitivity testing of Option 1



8. Draft conclusion and exemption from preparing a PADR

Option 1 is the preferred option at this draft stage and involves refurbishing the existing Line 8 by replacing or refurbishing the identified corroded components, as well as removing the asbestos paint, in one stage.

In particular, Option 1 involves the remediation of Line 8 to address its asset condition issues described in this PSCR. This scope of the refurbishment includes asset replacement, foundation concrete easement and paint removal. By undertaking the remediation works, TransGrid anticipates that the life of the asset will be extended by approximately 20 years.

It is expected that remediation works will be undertaken in various stages between 2018 and 2019 calendar years, with all works completed by 2021. The existing line is already in service and, as such, outages will be planned as necessary to facilitate the completion of the works.

The estimated capital cost of this option is approximately \$6.1 million. Routine operating and maintenance costs are approximately \$30,000 in 2018/19 but are expected to be the same under the base case as these costs relate to planned routine checks of the line by TransGrid field staff.

The preferred option to refurbish the line reduces the bushfire and safety risks to acceptable levels and this risk reduction outweighs the capital expenditure.

NER clause 5.16.4(z1) provides for a TNSP to be exempt from producing a PADR for a particular RIT-T application, in the following circumstances:

- > if the estimated capital cost of the preferred option is less than \$41 million;
- > if the TNSP identifies in its PSCR its proposed preferred option, together with its reasons for the preferred option and notes that the proposed investment has the benefit of the clause 5.16.4(z1) exemption; and
- > if the TNSP considers that the proposed preferred option and any other credible options in respect of the identified need will not have a material market benefit for the classes of market benefit specified in clause 5.16.1(c)(4), with the exception of market benefits arising from changes in voluntary and involuntary load shedding.

TransGrid considers that its investment in relation to Option 1 is exempt from producing a PADR under NER clause 5.16.4(z1).

In accordance with NER clause 5.16.4(z1)(4), the exemption from producing a PADR will no longer apply if TransGrid considers that an additional credible option that could deliver a material market benefit is identified during the consultation period.

Accordingly, if TransGrid considers that any additional credible options are identified, TransGrid will produce a PADR which includes an NPV assessment of the net market benefit of each additional credible option.

Should TransGrid consider that no additional credible options were identified during the consultation period, TransGrid intends to produce a PACR that addresses all submissions received including any issues in relation to the proposed preferred option raised during the consultation period.²⁰

²⁰ In accordance with NER clause 5.16.4(z2).

Appendix A – Compliance checklist

This appendix sets out a compliance checklist which demonstrates the compliance of this PSCR with the requirements of clause 5.16.4(b) of the Rules version 111.

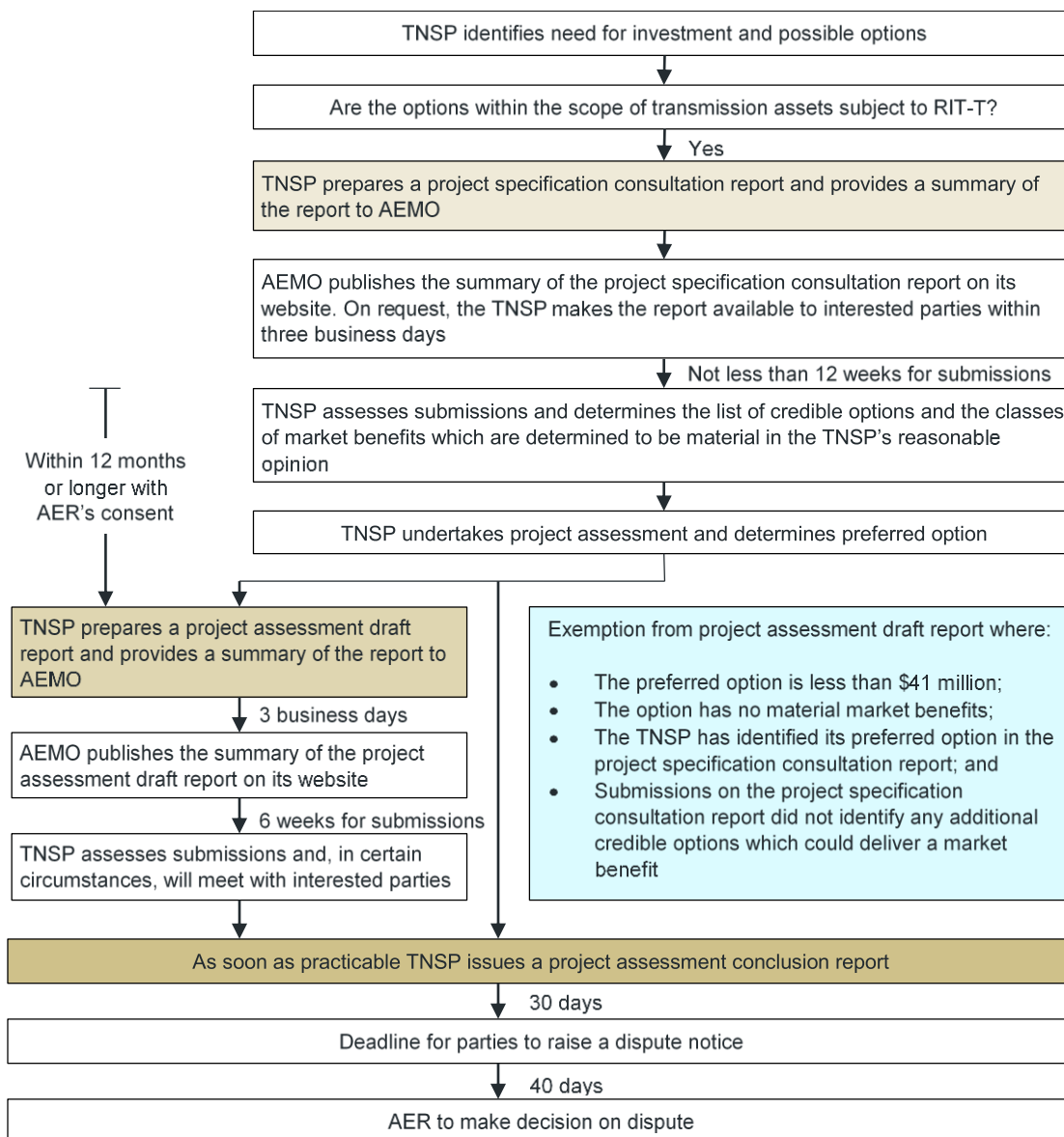
Rules clause	Summary of requirements	Relevant section(s) in PSCR
5.16.4 (b)	A RIT-T proponent must prepare a report (the project specification consultation report), which must include:	–
	(1) a description of the identified need;	2
	(2) the assumptions used in identifying the identified need (including, in the case of proposed reliability corrective action, why the RIT-T proponent considers reliability corrective action is necessary);	2.3
	(3) the technical characteristics of the identified need that a non- network option would be required to deliver, such as: (i) the size of load reduction of additional supply; (ii) location; and (iii) operating profile;	4
	(4) if applicable, reference to any discussion on the description of the identified need or the credible options in respect of that identified need in the most recent National Transmission Network Development Plan;	NA
	(5) a description of all credible options of which the RIT-T proponent is aware that address the identified need, which may include, without limitation, alternative transmission options, interconnectors, generation, demand side management, market network services or other network options;	3
	(6) for each credible option identified in accordance with subparagraph (5), information about: (i) the technical characteristics of the credible option; (ii) whether the credible option is reasonably likely to have a material inter-network impact; (iii) the classes of market benefits that the RIT-T proponent considers are likely not to be material in accordance with clause 5.16.1(c)(6), together with reasons of why the RIT-T proponent considers that these classes of market benefit are not likely to be material; (iv) the estimated construction timetable and commissioning date; and (v) to the extent practicable, the total indicative capital and operating and maintenance costs.	3 & 5

5.16.4(z1)	<p>A RIT-T proponent is exempt from paragraphs (j) to (s) if:</p> <ol style="list-style-type: none"> 1. the estimated capital cost of the proposed preferred option is less than \$35 million (as varied in accordance with a cost threshold determination); 2. the relevant Network Service Provider has identified in its project specification consultation report: (i) its proposed preferred option; (ii) its reasons for the proposed preferred option; and (iii) that its RIT-T project has the benefit of this exemption; 3. the RIT-T proponent considers, in accordance with clause 5.16.1(c)(6), that the proposed preferred option and any other credible option in respect of the identified need will not have a material market benefit for the classes of market benefit specified in clause 5.16.1(c)(4) except those classes specified in clauses 5.16.1(c)(4)(ii) and (iii), and has stated this in its project specification consultation report; and 4. the RIT-T proponent forms the view that no submissions were received on the project specification consultation report which identified additional credible options that could deliver a material market benefit. 	8
------------	---	---

Appendix B – RIT-T process overview

For the purposes of applying the RIT-T, the NER establishes a typically three stage process, ie: (1) the PSCR; (2) the PADR; and (3) the PACR. This process is summarised in the figure below (in gold), as well as the criteria for PADR exemption that this RIT-T is seeking to apply (in blue).

Figure 8 The RIT-T assessment and consultation process



Source: AER, Final Regulatory investment test for transmission application guidelines, 18 September 2017, p. 42.

Appendix C – Summary of the specific remediation works under Option 1

The table below summarises the nine key issues on Line 8 that require remediation, as well as how this is proposed to be done under Option 1.

Table 8 Transmission Line 8 Option 1 – Remediation works under Option 1

Issue	Remediation
Corrosion of tower members	> Abrasive blast cleaning of steelwork to remove any corrosion product, application of coating – entire tower.
Corrosion of tower fasteners	> Replacement of fasteners.
Corrosion of conductor fittings	> Replacement of conductor fittings.
Corrosion of earthwire fittings	> Replacement of earthwire fittings.
Insulator pin corrosion	> Replacement with composite longrod insulators.
Corrosion of earthwire	> Like for like replacement of SC/GZ earthwire.
Conductor vibration damper condition	> Replacement of vibration dampers. >
Corrosion of grillage foundation	> replacement of end of life sacrificial anodes for towers located in non-aggressive soil > buried steel remediation and concrete encasement for towers located in aggressive soil >
Asbestos paint	> Removal of asbestos paint through the use of paint strippers.