

SNOWY 2.0 CONNECTION PROJECT

Connecting Snowy 2.0 to the grid

FACT SHEET - SEPTEMBER 2022

A new transmission connection and substation is proposed to connect Snowy 2.0 to the National Electricity Market (NEM). Snowy 2.0 is a pumped hydro expansion of the existing Snowy Scheme planned by Snowy Hydro Limited with an anticipated capacity of 2000 megawatts.

Why is a connection necessary?

New generation assets need to be connected to the transmission network to be able to operate within the NEM. Snowy 2.0 requires this transmission and substation connection to connect their generation into the existing transmission network to therefore unlock the full capacity of the Snowy 2.0 project.

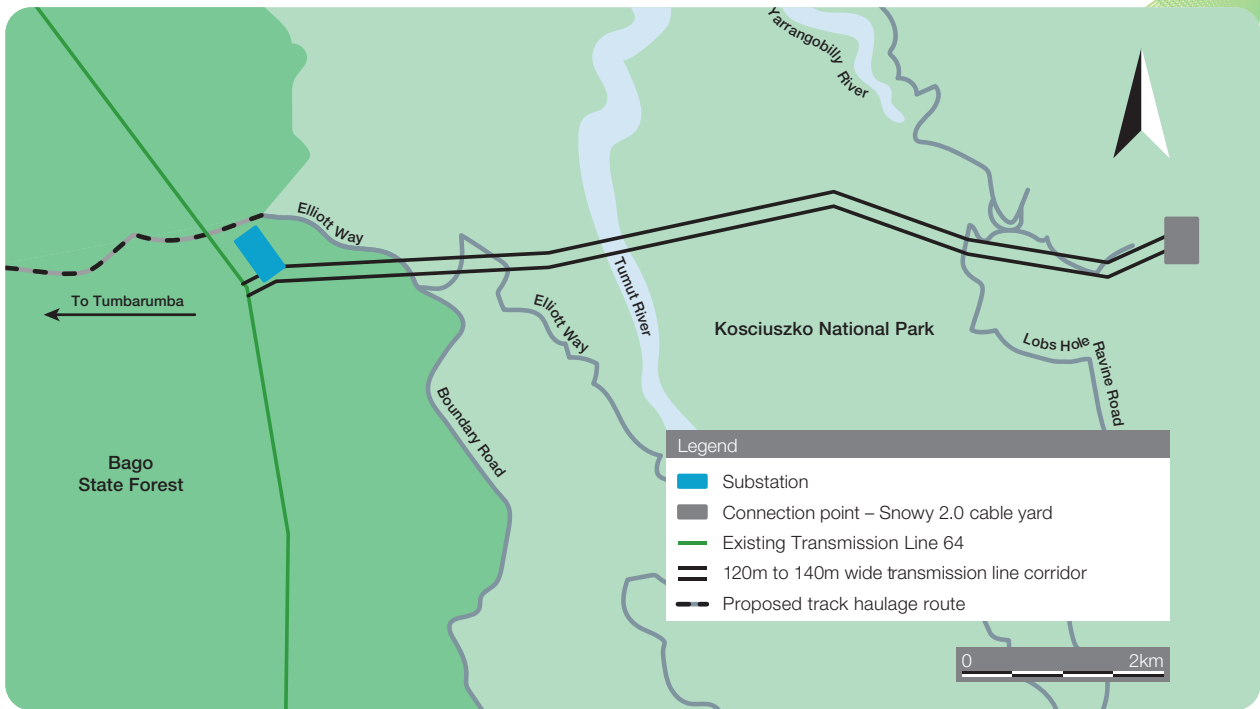
What is TransGrid proposing?

Transgrid is proposing to construct and operate a dual 330kV double circuit overhead transmission connection and substation to meet the grid connection requirements of Snowy 2.0. The two lines would be side-by-side, spanning from the Snowy 2.0 generator site through Kosciuszko National Park to the new substation located in Bago State Forest, adjacent to Transgrid's existing Transmission Line 64. The length of the connection is approximately 9 kilometres. See map over page.

What are the project benefits?

- The project would unlock economic benefits of Snowy 2.0 by providing improved energy security and reliability, and lower energy costs for consumers.
- Up to 140 new jobs in NSW will be created during construction.
- Goods and services from local businesses will be preferred during construction, and these opportunities will be promoted through the Industry Capability Network.
- The project will contribute to a clean energy future.

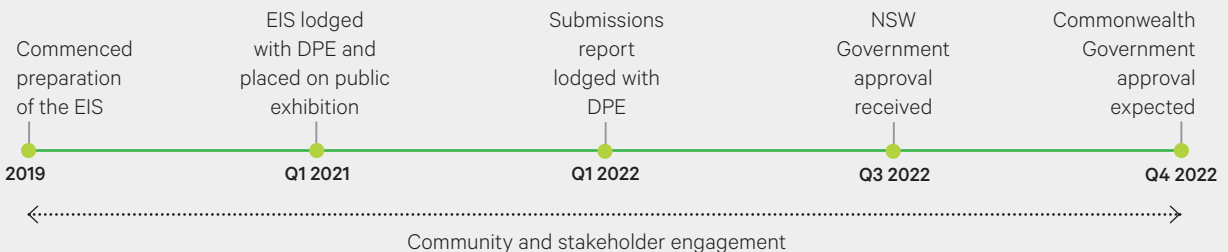
TransGrid operates the main high voltage transmission network in NSW and the ACT. We are committed to building the foundations for a resilient, low-emissions electricity system. Our safe, reliable and efficient high-voltage grid connects electricity generators to one in three Australians. A better connected network will enable consumers to access more affordable electricity.



Next steps

An Environmental Impact Statement was lodged with the Department of Planning and Environment (DPE) in February 2021 and placed on public exhibition. Transgrid then provided a Submissions Report to DPE outlining the issues raised during public exhibition and provided responses. NSW Government approval for the project was received in early September 2022 and Commonwealth Government approval is expected in the near future. Transgrid will continue to consult with the community and key stakeholders to address concerns and mitigate potential community impacts.

Key project dates



What to expect when TransGrid carries out this construction work



Timing:
2023–2025



Activities:
Bulk excavation, civil construction works, electrical equipment deliveries, vegetation clearing, access track works, tower construction and stringing of new lines



Workforce:
Up to 140 workers during peak construction



Vehicle movements:
During peak construction the proposed activities would generate up to 80 light vehicle and 75 heavy vehicle movements per day