

ENERGYCONNECT

Newsletter

June 2022

Welcome to the June EnergyConnect newsletter. In this edition:

- [EnergyConnect construction officially underway](#)
- [New transmission to transform grid](#)
- [Malcolm's art is ground-breaking](#)
- [Making a difference in local communities](#)
- [Protecting our Indigenous heritage](#)
- [NSW-Eastern Section project update](#)
- Project infrastructure on the move to Buronga
- EnergyConnect launch in pictures



EnergyConnect construction officially underway

We've broken ground at Buronga, marking the start of work on the NSW section of EnergyConnect. This \$1.8 billion investment by Transgrid is delivering the power grid of the future. Our CEO Brett Redman joined construction partners Secure Energy JV, Wentworth Shire Mayor Tim Elstone and Traditional Owners for the official launch of the project.

[Learn more](#)



New transmission to transform grid

More than 9000 kilometres of conductor cabling, enough to span from Sydney to Perth three times, will be used to deliver Australia's largest electricity transmission project. EnergyConnect is helping to revolutionise the National Electricity Market, reducing power bills and connecting more renewables to the network.

[Learn more](#)



Malcolm's art is ground-breaking

Aboriginal artist and Barkindji man, Malcolm King, crafted four unique digging sticks which were used to mark the start of construction work on EnergyConnect. Digging sticks are both a practical tool and a thing of beauty, used as a means of telling and sharing stories.

[Learn more](#)



Making a difference in local communities

Our Community Partnerships Program provides assistance to local not-for-profit groups. It's just one way we are giving back to communities where we operate as part of EnergyConnect. We recently provided a grant to the Country Education Foundation of Coleambally-Darlington Point to fund education support. The Foundation assists students to attend university or complete VET courses and then bring their skills back to the community.

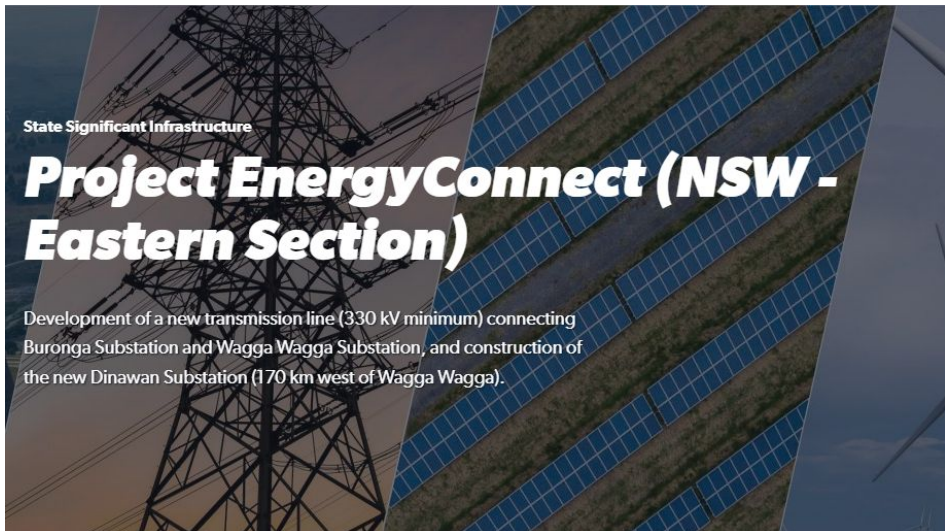
[Learn more](#)



Protecting our Indigenous heritage

A lot of preparation has gone into EnergyConnect, including looking at ways we can respect the Indigenous history of the lands where it will be built. We engaged experts to carry out archaeological excavations along the project route. This work is aimed at preserving Indigenous cultural items and sites.

[Learn more](#)



NSW-Eastern Section project update

Transgrid has lodged its Response to Submissions in relation to the EnergyConnect NSW-Eastern Section Environmental Impact Statement. The documentation is available to the community at the Department of Planning and Environment's website.

[Learn more](#)



Project infrastructure on the move to Buronga

Travelling on or near Arumpo Road, Buronga? Be advised heavy vehicles will be transporting accommodation modules to the new EnergyConnect camp and laydown, adjacent to the Buronga Substation, for the next three months. Australian Portable Camps are delivering modules from their Monarto facility near Murray Bridge via major highways and motorists can expect to see at least five loads per day over the coming weeks. Please drive to the conditions. If you have any enquiries or concerns, please contact the EnergyConnect Community Line on 1800 49 06 66.

EnergyConnect launch in pictures



Connect with us

1800 49 06 66 (free call)

pec@transgrid.com.au

transgrid.com.au/energyconnect



People. Power. Possibilities.
