

Mount Piper to Wallerawang Transmission Project

Strengthening the grid to deliver affordable, reliable and clean energy to customers

FACT SHEET - OCTOBER 2023

Transgrid will carry out upgrades to our transmission network in the State's Central Tablelands to support the NSW Government's delivery of the Central-West Orana Renewable Energy Zone (REZ)

Why is the project needed?

The Mount Piper to Wallerawang Transmission Line Upgrade Project will strengthen and reinforce the grid in the Central Tablelands, helping to ensure that power from the Central-West Orana REZ can be reliably moved back into the grid and to consumers.

What are we building?

We will:

- build a new 330kV transmission line between our existing substations located at Mount Piper and Wallerawang
- install extra feeder bays within both substation switchyards
- upgrade substation equipment and systems to cater for the additional transmission line and allow more capacity.

What are the project benefits?

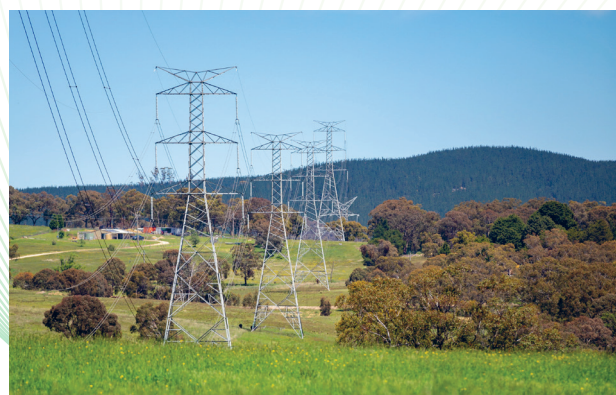
- new local jobs – opportunities for local workers and businesses during procurement and construction
- cheaper electricity – improving the affordability of electricity for consumers by increasing bulk supply and driving down wholesale electricity prices
- improved reliability – through strengthening and reinforcing the grid in the local region
- reduced emissions and a greater mix of renewable energy in the National Electricity Market.

What is a Renewable Energy Zone?

REZs are modern-day power stations. They combine renewable energy generation such as wind and solar, storage such as batteries, and high-voltage poles and wires to deliver energy to the homes, businesses and industries that need it.

Our area of interest

The Wallerawang and Mount Piper area (shown in the map overleaf) is located approximately 20 kilometres north-west of Lithgow on the western fringes of the Blue Mountains.



Transgrid's existing 330kV line near Wallerawang

People. Power. Possibilities.

Map: area of interest and Transgrid's existing assets



What's happening?

We are in the early stages of project planning. Our team is currently in consultation with key stakeholders and potentially impacted landholders to fully understand the constraints surrounding the different corridor options to assess their viability. It is important that these factors are considered before a proposed corridor is presented to the community, so that we ensure any corridor presented for community consultation is feasible.

How can you be involved?

Transgrid recognises the vital role that landowners and the community have in the planning and delivery of our projects. We are committed to talking to the community to help us shape the best possible solution.

We encourage you to:

- email us or call our community hotline (see details below)
- visit our webpage for project updates and to subscribe to receive the latest news
- share your feedback and ideas at community information sessions (to be advertised in advance)
- request a meeting.

Next steps

Once our initial analysis is complete, we will release a proposed route for the new transmission line to the community for consultation. Your views will help us to determine a preferred route, which will then be subject to a robust environmental assessment process. More detail about the route selection process is on our webpage.

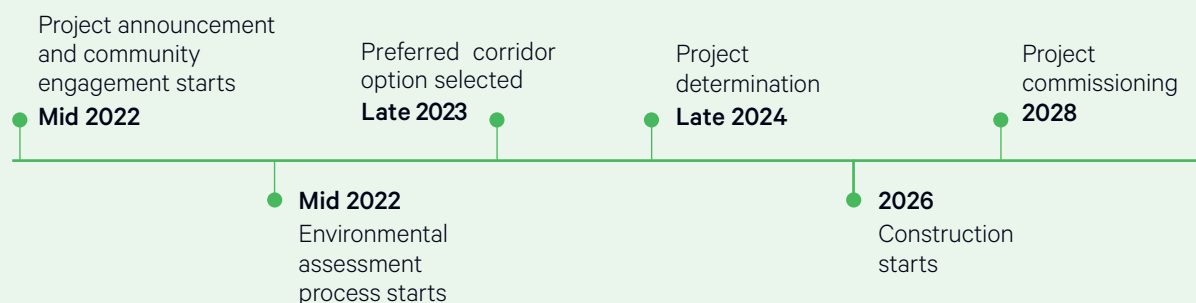
About Transgrid

Transgrid operates and manages the high-voltage network in NSW and the ACT.

We operate a safe, reliable and efficient high-voltage grid that connects electricity generators to one in three Australians.

We are building the future grid to enable greater renewable integration and drive down wholesale electricity prices.

Key project dates



Connect with us

1800 222 537 (free call)
community@transgrid.com.au

Find out more at:
transgrid.com.au/wallerawang