

# Powering Sydney's Future

## POTTS HILL TO ALEXANDRIA TRANSMISSION CABLE PROJECT COMMUNITY NOTIFICATION

### Permanent road restoration at Old Canterbury Road, Ashfield and Arlington Street, Dulwich Hill

TransGrid is installing a new underground electricity cable from Potts Hill to Alexandria. The Powering Sydney's Future project will help ensure a safe, reliable and affordable electricity supply for Sydney's CBD and surrounding areas. You can view a map of the cable route at [www.transgrid.com.au/psf](http://www.transgrid.com.au/psf).

Subject to the NSW Government public health order restrictions on construction being lifted, work will start on **Monday 2 August 2021** to permanently restore the road surface at the intersection of **Old Canterbury Road, Ashfield and Arlington Street, Dulwich Hill**. This work is expected to take **one to two weeks** to complete, weather and ground conditions permitting. Please refer to the map overleaf for the location of the work.

#### Work activities

- > Delivering plant and equipment to site.
- > Removing a layer of the existing road surface.
- > Placing new asphalt and concrete on the road pavement.
- > Compacting the road surface using a roller.

#### Work hours

Work hours are **7am to 6pm Monday to Saturday**.

#### How will the work affect you?

- > **Two-way traffic on Old Canterbury Road will be maintained under a stop/slow traffic configuration.**
- > **Arlington Road will be closed to through traffic between Old Canterbury Road and Dixson Avenue.** Access for residents will be maintained via Arlington Street westbound or Dixson Avenue.
- > **Prospect Road will be closed to through traffic between Old Canterbury Road and Hurlstone Avenue.** Access for residents will be maintained via Prospect Road southbound or Hurlstone Avenue.
- > Traffic control will be in place for the safety of workers and road users.
- > The work will be noisy at times, but we will make every effort to keep noise to a minimum.
- > There may be temporary closures of footpaths but we will provide an alternative route.
- > Road users may experience short delays to access local properties.
- > If we expect your driveway access will be disrupted, we will inform you in advance and discuss arrangements.



#### Connect with us

Community Information Line: 1800 955 588

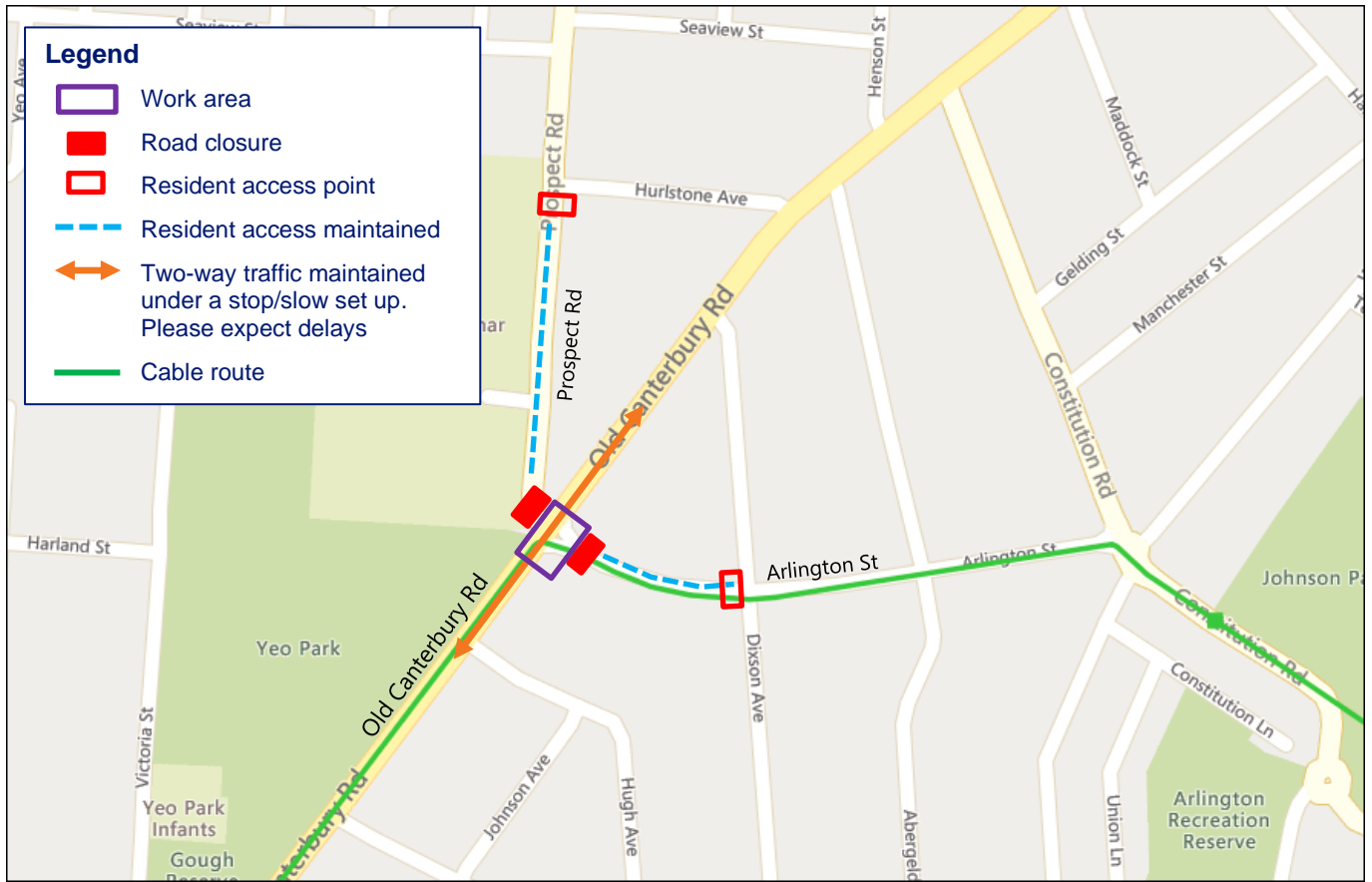
Email: [psf@transgrid.com.au](mailto:psf@transgrid.com.au)

Web: [www.transgrid.com.au/psf](http://www.transgrid.com.au/psf)

Postal address: PO Box A1000 Sydney South NSW 1235



## Location of work



## What's next

Following this work, we will return to permanently restore the road surface on Old Canterbury Road between Hanks Street and Arlington Street, and on Arlington Street between Old Canterbury Road and Constitution Road. We will keep you advised of these work activities.

## Contact us

If you have any questions or concerns, please contact the Powering Sydney's Future project team on 1800 955 588 or at [psf@transgrid.com.au](mailto:psf@transgrid.com.au)

### COVID-19 Safety protocols

The health and safety of our people, customers and the community and ensuring a reliable supply of electricity to NSW and the ACT are our highest priorities during the COVID-19 crisis.

TransGrid and our contractors, as a minimum, adhere to the recommendations of SafeWork NSW along with the advice of other state and federal authorities to effectively manage the risk of COVID-19 to workers and others in the work environment. This involves maintaining effective controls including social distancing, stringent hygiene and specific work planning and access protocols at our work sites.



131 450

For an interpreter please call **131 450** and ask them to call TransGrid on **1800 955 588**. The interpreter will then assist you with translation.

## Connect with us

Please visit our website: [www.transgrid.com.au/psf](http://www.transgrid.com.au/psf) or contact the Powering Sydney's Future project team:  
Community Information Line: **1800 955 588** Email: [psf@transgrid.com.au](mailto:psf@transgrid.com.au)  
Postal address: **PO Box A1000 Sydney South NSW 1235**