

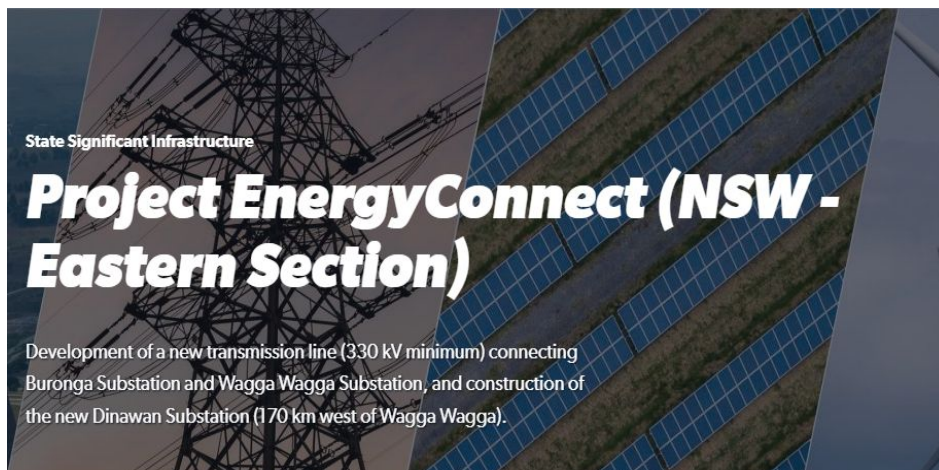
ENERGYCONNECT

Newsletter

January 2022

Welcome to the January EnergyConnect newsletter. In this edition:

- EnergyConnect NSW-Eastern Section update
- Upcoming community drop-in sessions
- Learn more about the EIS online
- Make a submission on the EIS
- South Australia approves EnergyConnect
- Partnering with landowners on biodiversity



NSW-Eastern Section update

We have lodged an Environmental Impact Statement (EIS) for the NSW-Eastern Section of EnergyConnect with the NSW Department of Planning and Environment (DPE). It is on public exhibition until 15 February 2022. The EIS provides detailed information, including:

- the outcomes of technical studies carried out to identify the potential impacts of the project, including economic, social, and environmental studies
- proposed management measures to avoid or minimise those potential impacts
- a summary of the stakeholder and community feedback received as part of the extensive engagement activities undertaken to date.

Following the EIS exhibition period, a submissions report will be prepared in response to this formal feedback. The Minister for Planning will then provide a decision on the project.

Subject to receiving all necessary approvals, construction of the project's NSW-Eastern Section is anticipated to commence in late 2022.

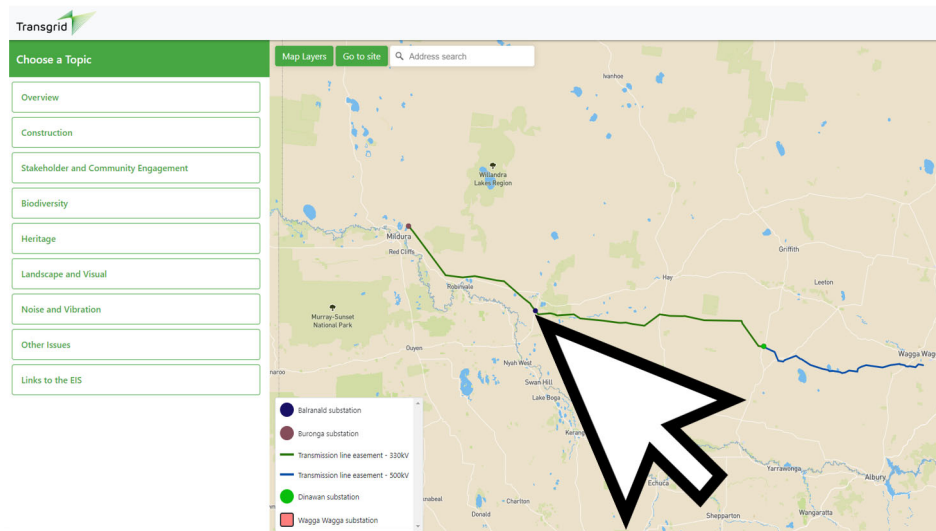


Upcoming community drop-in sessions

The EnergyConnect team is hosting community information sessions where you can drop in any time, ask questions about the EIS and learn more about the project.

We'll be visiting Balranald, Booroorban, Buronga, Coleambally, Hay, Lockhart, Moulamein, Urana and Wagga Wagga between 31 January and 11 February 2022. Drop into a session anytime and meet the team. In accordance with NSW Government guidelines, COVID-19 safety plans will be in place for everyone's safety.

[View session times](#)



Learn more about the EIS online

To help you make an informed submission, we have created a Community Guide to the NSW-Eastern Section EIS.

In addition, we have developed an interactive EIS map to support community engagement.

[View the interactive EIS map](#)

[View the Community Guide](#)



Make a submission on the EIS

Making a submission is an important part of the EIS process and we encourage everyone to have their say. DPE must receive EIS submissions before the close of the exhibition period on Tuesday 15 February 2022.

[Make a submission](#)



South Australia approves EnergyConnect

EnergyConnect continues to power ahead, with the South Australian Government approving the EIS for the SA section of the project. ElectraNet is delivering the SA section of the interconnector from Robertstown to the NSW border.

[Learn more](#)



Partnering with landowners on biodiversity

We're inviting landowners to partner with us to manage biodiversity on the EnergyConnect project.

Our innovative Biodiversity Stewardship Agreements will protect flora and fauna habitats and help us provide the best possible outcomes for landowners and the environment.

[Learn more](#)



Opportunities to be a project supplier

EnergyConnect principal contractor SecureEnergy has released a further two expressions of interest for project suppliers.

Procurement opportunities include the manufacture of cattle stock grids and the fabrication of reinforcement cages for use in concrete piles.

[Explore opportunities](#)

SecureEnergy works update

SecureEnergy is continuing cultural heritage surveys in the Wentworth area. Registered Aboriginal Parties are working on-site with archaeologists during February.

Further pre-construction surveying is also being undertaken along the EnergyConnect western corridor alignment.

Connect with us

1800 49 06 66 (free call)

pec@transgrid.com.au

transgrid.com.au/energyconnect



People. Power. Possibilities.
