



HumeLink

Amendment Report Assessment Outcomes Community Information Webinar

April 2024

Acknowledgment of Country

We begin our commitment to reconciliation by acknowledging the Traditional Owners of the land on which we meet today.

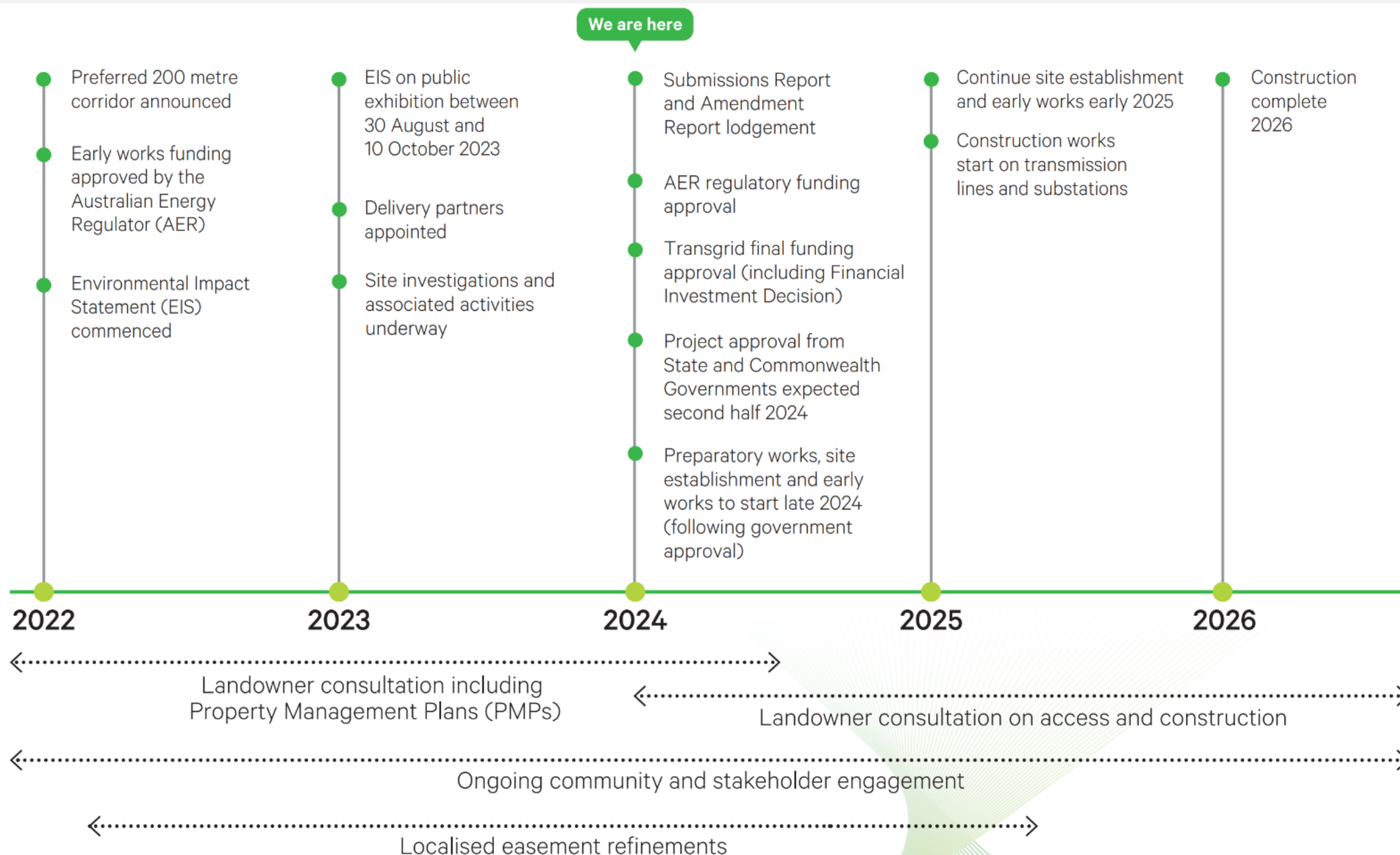
We pay respect to Elders past and present.



Agenda

Acknowledgment of Country	2 minutes
Introductions	3 minutes
Project and Amendment Report update	10 minutes
Amendment Report assessment outcomes	20 minutes
Questions/discussion	30 minutes
Close	5 minutes

HumeLink project overview: key dates



Find out more at:
[Transgrid.com.au](https://www.transgrid.com.au)

People. Power. Possibilities.



Amendment Report Update



Amendment Report



Transgrid identified proposed amendments and refinements to the HumeLink project as presented in the EIS.



The Amendment Report considers proposed design amendments and refinements following public exhibition of the EIS. This document describes and assesses potential impacts from proposed amendments and identifies how impacts would be managed and mitigated.



The proposed amendments have been made in response to both issues raised in community and stakeholder submissions received during the public exhibition of the EIS, as well as changes made as part of ongoing design refinement of the project.



Transgrid continues to engage with community and stakeholders during the preparation of the Amendment Report.



The Amendment Report and Submissions Report will cross reference one another and should be read in conjunction, and both documents will be submitted to the DPHI concurrently.

Amendment Report – proposed amendments and refinements

Green Hills State Forest
and other minor route
changes to the
transmission line
corridor

Nomination of access
tracks

Updates to construction
compounds and worker
accommodation
facilities

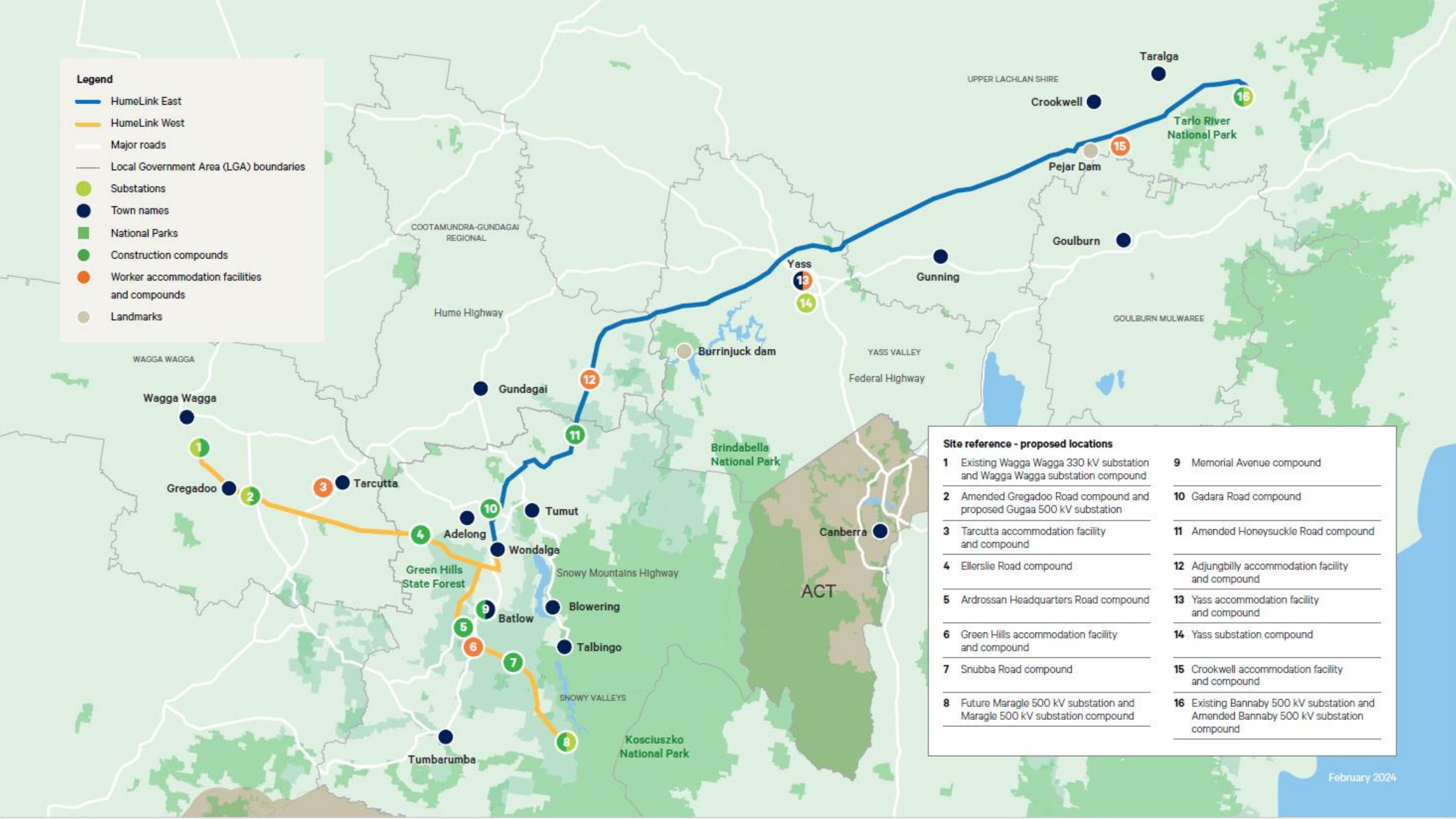
Additional
telecommunications
connections to existing
substations

Refinements:

- Transmission line and substation design refinements
- Identification of indicative controlled blasting areas
- Access to water sources
- Use of helicopters and drones

Legend

- HumeLink East
- HumeLink West
- Major roads
- Local Government Area (LGA) boundaries
- Substations
- Town names
- National Parks
- Construction compounds
- Worker accommodation facilities and compounds
- Landmarks



Site reference - proposed locations

- | | |
|--|--|
| 1 Existing Wagga Wagga 330 kV substation and Wagga Wagga substation compound | 9 Memorial Avenue compound |
| 2 Amended Gregadoo Road compound and proposed Gugaa 500 kV substation | 10 Gadara Road compound |
| 3 Tarcutta accommodation facility and compound | 11 Amended Honeysuckle Road compound |
| 4 Ellerslie Road compound | 12 Adjungbilly accommodation facility and compound |
| 5 Ardrossan Headquarters Road compound | 13 Yass accommodation facility and compound |
| 6 Green Hills accommodation facility and compound | 14 Yass substation compound |
| 7 Snubba Road compound | 15 Crookwell accommodation facility and compound |
| 8 Future Maragle 500 kV substation and Maragle 500 kV substation compound | 16 Existing Bannaby 500 kV substation and Amended Bannaby 500 kV substation compound |

Amendment Report Assessment Outcomes



Amendment Report – Traffic, transport and access



Line stringing over a local road

Assessment undertaken:

- Defined amended traffic study area
- Review of the revised oversize and over mass (OSOM) report
- Identify most efficient routes between construction compounds and accommodation facilities through spatial analysis
- Calculate traffic generation and distribution.

Assessment outcomes:

- Heavy vehicle movements, particularly on roads adjacent to substation sites and construction compounds
- Increased traffic volumes on local road network assessed as low
- Reduced road condition – potential impacts most likely to occur on unsealed access roads to construction compounds
- Road closures – transmission line stringing across roads may require temporary closures for a short duration.

Amendment Report – Noise and vibration



Noise logger measuring background noise

Assessment undertaken:

- Additional sensitive receivers and ambient noise monitoring locations to supplement the construction assessment in the EIS including:
 - New and amended construction compounds and worker accommodation facilities
 - Road traffic noise associated with access tracks/roads and intersection upgrades
 - Aircraft noise from helicopter and drone use
 - Controlled blasting and crushing at indicative locations.

Assessment outcomes:

- Temporary construction noise impacts from proposed construction compounds and accommodation facilities
- Construction road traffic noise impacts – noticeable increase in noise levels during peak construction
- Aircraft noise from the use of helipads – 13 potential locations – five locations with predicted aircraft noise impacts
- Operational impacts from the proposed Gugaa 500 kV substation.

Amendment Report – Landscape character and visual amenity

Assessment undertaken:

- Site inspection to update the viewpoint assessment
- Adjustments to the landscape character areas
- Revised photomontages where amended project changed the view
- Additional 3D modelled views for non-easement affected dwellings.

Assessment outcomes:

- Reduced landscape character impacts in the Tumbarumba rural valleys sub-character area
- An increase in the impact on the Green Hills forested hills sub-character area
- Increased visual impacts near the proposed Gugaa 500 kV substation
- Reduced visual impacts from Stewarts Road in Batlow.



Amendment Report – Land use and property

Assessment undertaken:

- The agricultural study area has been amended to include the amended project footprint and a buffer of 1.5 kilometres
- Updates to the Agricultural Impact Assessment and
- Land Use and Property Impact Assessment reports



Assessment outcomes:

- Potential land use impacts:
 - Amended project footprint intersects 645 hectares of additional forestry land
- Potential property impacts includes changes to:
 - temporary or permanent alterations to tenure or ownership arrangements (including temporary accommodation facilities and construction compounds and access tracks)
 - Travelling stock reserves (amended project footprint intersects 21 ha of TSR)
 - built environment (one additional dwelling within the project footprint – compared to EIS)

Amendment Report Community and Stakeholder Engagement

HumeLink community consultation activities overview

March 2021 – March 2024



81
Community events with **more than 320** attendees

15
Webinars with **115** attendees

6
Landowner webinars

30[^]
Community Consultative Group (CCG) meetings with **more than 345** attendees

[^]including CCG members and observers

5,597
Responses to community enquiries

320
Phone calls via the 1800 number

58,689
Page views on the HumeLink website

More than 1,300
One-on-one meetings with easement affected landowners

More than 16,700⁺
Interactions with easement affected landowners

⁺including phone calls, emails and text messages

WAGGA WAGGA

13 Community information sessions

7 CCG meetings

4 Street meetings

COOTAMUNDRA-GUNDAGAI REGIONAL

5 Community information sessions

4 Combined CCG meetings

SNOWY VALLEYS

31 Community information sessions

9 CCG meetings

2 Street meetings

1 Bushfire management workshop

YASS VALLEY

11 Community information sessions

10 CCG meetings

2 Street meetings

UPPER LACHLAN SHIRE

20 Community information sessions

2 Street meetings

GOULBURN MULWAREE

1 Community information session

Legend

- Adjacent Local Government Area
- Local Government Areas HumeLink traverses
- Amended project route
- EIS project route

Community consultation materials published

111
Email campaigns to subscribers

33
Factsheets and guides

19
Newsletters

108,465
Newsletters letterbox dropped

2,177^{*}
Comments on the HumeLink interactive map

47
Local print, radio and digital advertisements

^{}between May 2020 – March 2024*



Questions

Thank you

1800 31 73 67 (free call)
humelink@transgrid.com.au
transgrid.com.au/humelink

HumeLink Community
Engagement Team, PO BOX A1000,
Sydney South, NSW 1235

