



# HumeLink Community Consultative Group 13th Meeting August 2023



# Acknowledgment of Country

We begin our commitment to reconciliation by acknowledging the Traditional Owners of the land on which we meet today.

We pay respect to Elders past and present.



# Agenda

CCG commencement & acknowledgment of Country	5 minutes
Minutes and actions	10 minutes
Program update	15 minutes
EIS process and development	30 minutes
EIS topics	40 minutes
General business / Q&A	20 minutes
Close	



# Minutes and Actions



# Actions and Responses

## Actions

### Visualisation Tools

Transgrid to show images to CCG members of different visualisation tools to compare visual representation.

### RFS Engagement

Transgrid to attempt to obtain more detailed information on fighting fires under transmission lines and on ability to evacuate where there is a 25-metre exclusion zone due to smoke.

### Route Refinement

1. Transgrid to provide greater detail on the Yass Valley route refinement. Explanation stated there were constraints in consideration of the Rye Park Wind Farm. How does this impact Yass?
2. Transgrid to provide an update on route in the Yass region and what route will be in the EIS.

### Undergrounding

Transgrid to respond to community on where WSP's study to assess undergrounding overseas is up to.

### Towers

Transgrid to provide the height of the towers of the 500kV transmission lines between Bannaby and Mount Piper.

### Engagement

Transgrid to discuss with Rod Stowe to determine if there will be a replacement for Barbara El Gamal as Deputy Landowner Advocate.

### Project

1. Transgrid to clarify the percentage of opex over capex assumed in the RIT-T and that if assumptions have changed to explain the implications of this for the overall project viability in terms of net benefit/net cost.
2. Transgrid to provide an update on the sensitivity analysis on potential delays when completed.

# Responses to Items Taken on Notice

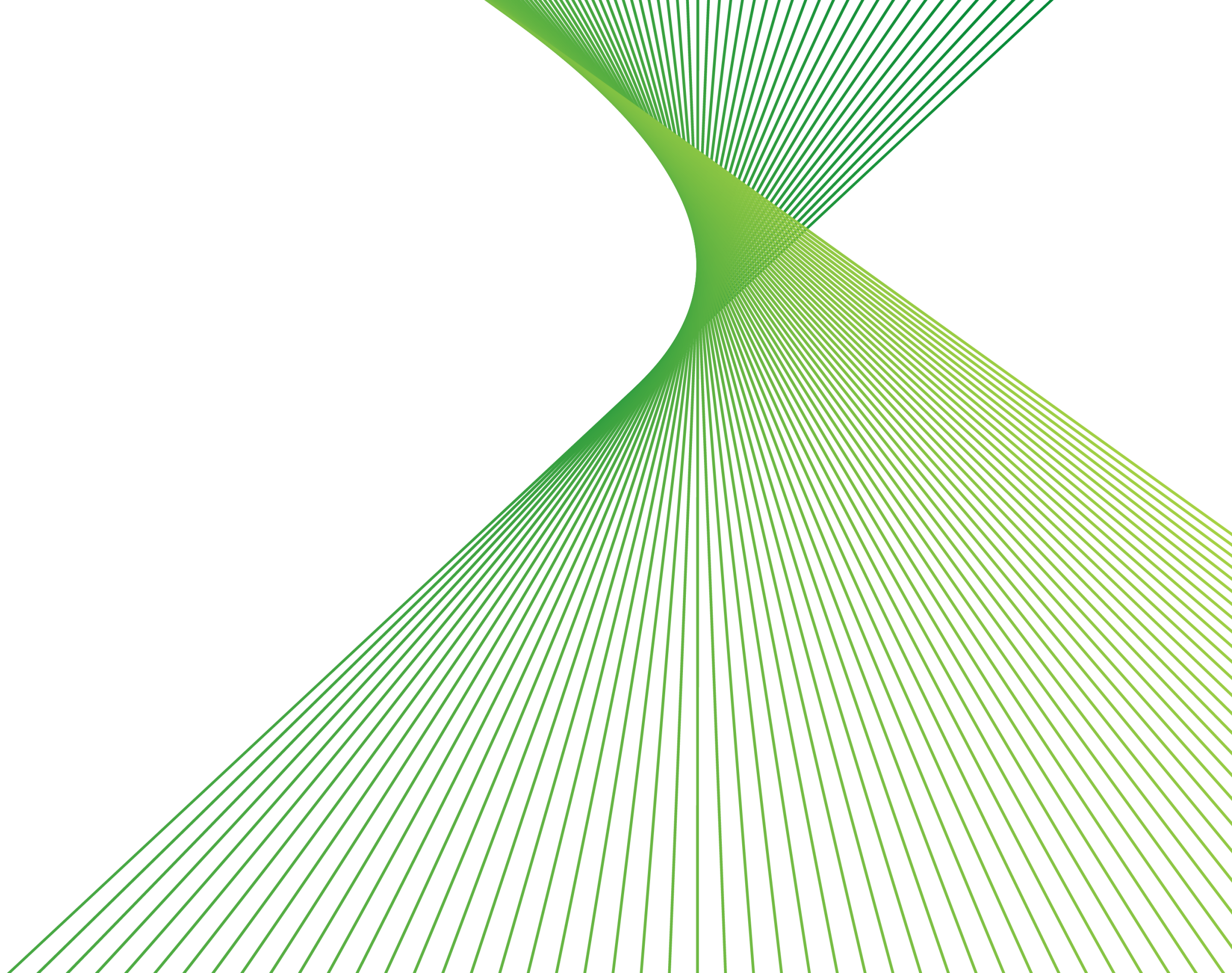
Items taken on notice	
<b>RFS Engagement</b>	
<ul style="list-style-type: none"><li>1. Were there requests to de-energise the line from local Rural Fire Service that did not go through to Transgrid?</li><li>2. What is the turnaround time for a request being made to de-energise the lines?</li><li>3. Provide number of RFS requests to de-energise the lines from fire brigade offices on the ground rather than head offices.</li><li>4. Provide clarification on the engagement with the Rural Fire Service and how local brigades on the ground know what they can and cannot do and the communication processes between local brigades, RFS Central operations and Transgrid.</li><li>5. Provide a map of the outages that occurred during 2019 – 2020 fires.</li></ul>	
<b>Route Refinement</b>	
Will there be visual impact to tourist areas (walking tracks, Pilot Hill Arboretum etc) from the alternate western route through Green Hills State Forest and Bago State Forest?	
<b>Undergrounding</b>	
Requested the WSP study to assess undergrounding overseas be made available to the CCG.	
<b>EIS</b>	
Request to extend the EIS public exhibition to greater than 1 month.	
<b>Towers</b>	
Provide proposed location of suspension vs. tension towers.	



# Responses to Items Taken on Notice

Items taken on notice	
<b>Site Rehabilitation</b>	
<ol style="list-style-type: none"><li>1. Provide information on how properties will be rehabilitated post construction and removal of work pads, including reference to impacts and rehabilitation methods for properties with soft/fragile soil.</li><li>2. Include rehabilitation activities on transmission line construction infographic.</li></ol>	
<b>Crane Pads</b>	
Provide size of crane pad	
<b>Collateral</b>	
Provide collateral that clearly explains (e.g., flow chart, infographic etc.) compulsory acquisition process and timeline and TG's role vs. government.	
<b>Project</b>	
Provide a list of projects, other than Snowy Hydro, feeding into HumeLink.	
<b>Compensation</b>	
What have TG done to advocate government for tax free compensation payments	

# Project Update





# Regulatory and Procurement update

Key CPA-1 Activities	STATUS
CPA-2 Preparation (includes Financial Modelling & AEMO feedback loop)	Well advanced
Procurement of Delivery Contractor (EOI\ECI)	Well advanced
Procurement of Long Lead Equipment and Materials (booking of production slots and commence early design and prototyping works)	In progress
Delivery Contract (SP1) – Detailed Designs & Early Works	Not started
Community and Stakeholder Engagement Activities	In progress
Environmental Impact Statement (all technical studies for preparation and subsequent approval of EIS)	Well advanced
Concept Designs	Complete
Investigations (Geotech and other studies)	Complete
Detailed Land Valuations & Landowner Negotiations	Well advanced
Land Option Agreements in place	In progress
Wagga Wagga 500kV Substation ('Gugaa') land acquisition	Well advanced

Actuals to end of Aug-22 (Pre-CPA1 Approval) **\$66.4M**

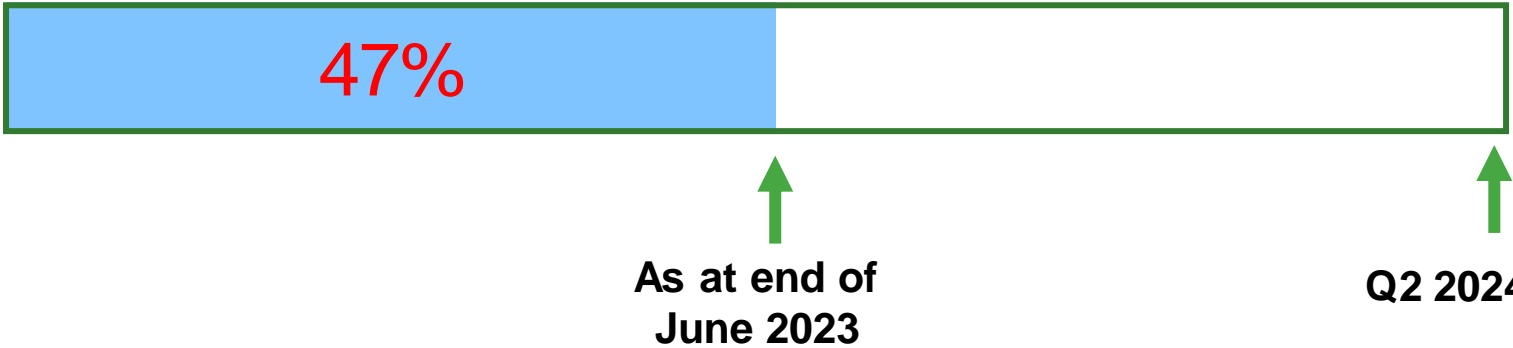


Total (Since CPA1 approval) **\$103.4M**

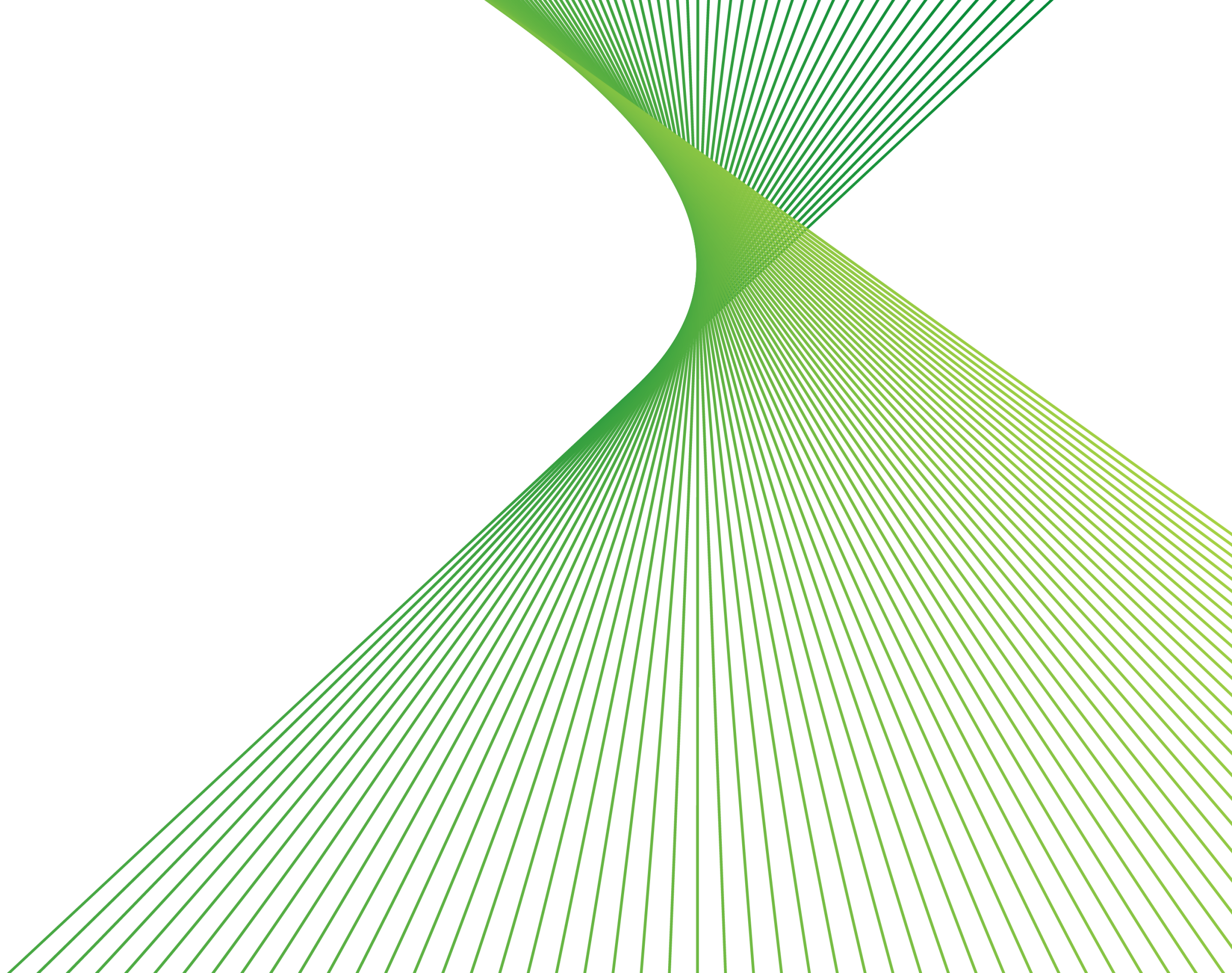


Total Cost to Date as at end of June-23 **\$169.8M**

**CPA 1 Funding Envelope to Total Outturn Cost in 2024**

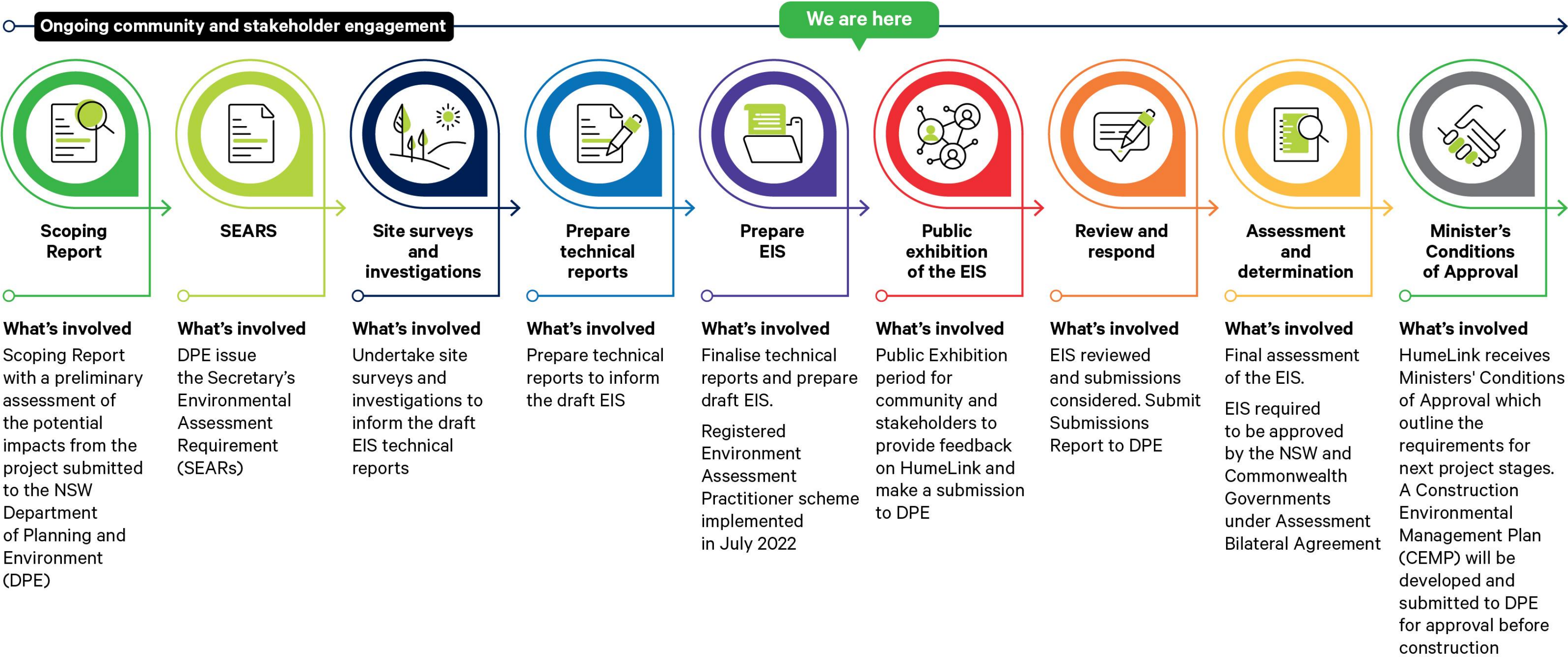


# EIS Process & Development





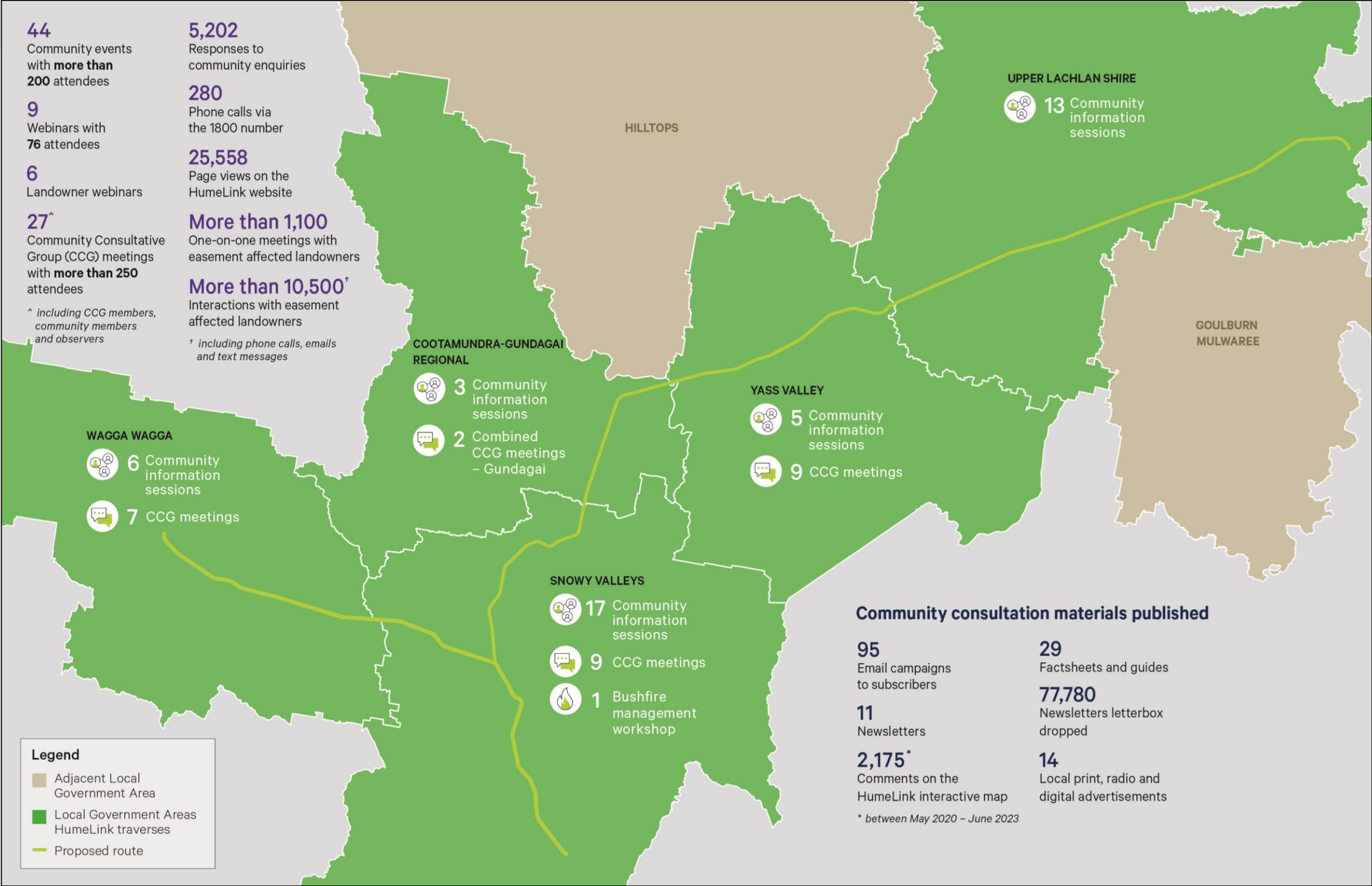
# HumeLink EIS – Planning approval pathway





# HumeLink community consultation activities overview

March 2021 – June 2023





# EIS public exhibition – Engagement

Stakeholder and  
Government  
agency briefings

Community group  
briefings and  
presentations

Aboriginal  
Stakeholders  
briefings

Community  
Information  
Sessions

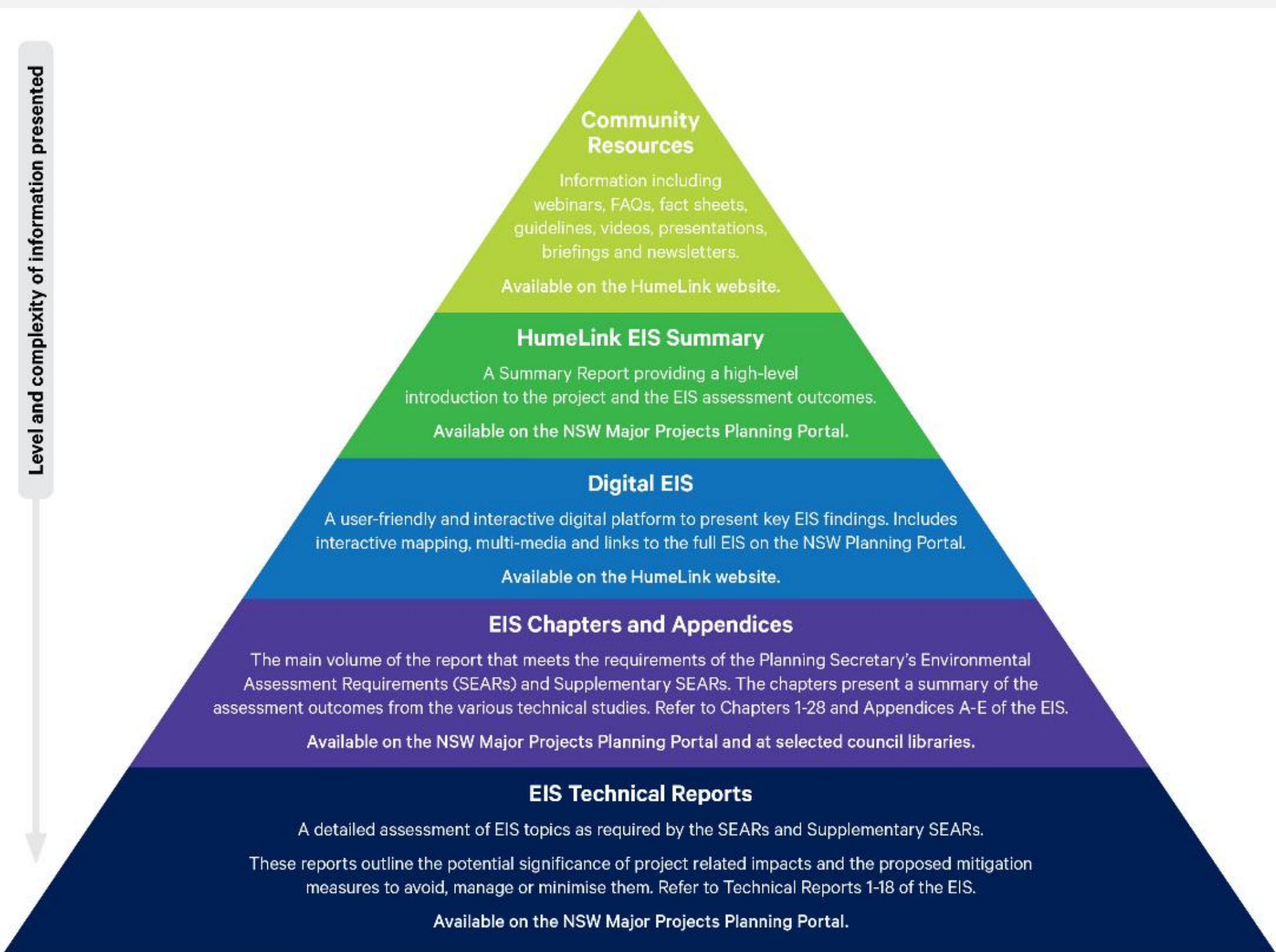
Community  
Information  
Webinars

Remote Access  
Community Hub

Hard copies of the  
EIS

Soft copies of the  
EIS

# EIS public exhibition – Information available on HumeLink EIS





# EIS public exhibition – How to make a submission



## How to make a submission to the NSW Department of Planning and Environment (DPE)

### Online

- 1 Visit the NSW DPE Major Projects Planning Portal:  
[www.planningportal.nsw.gov.au/major-projects](http://www.planningportal.nsw.gov.au/major-projects)
- 2 Create a Major Projects account by clicking the 'Sign in' button
- 3 Search for the HumeLink project
- 4 Click the 'Make a submission' button

### Post

Post your hard-copy with both the mailing envelope and submission addressed to:

Director – Energy Assessments  
Planning and Assessment  
Department of Planning and Environment  
Application number: **SSI-36656827**  
Locked Bag 5022  
Parramatta NSW 2124

The EIS public exhibition process for the HumeLink project is run by the NSW Department of Planning and Environment (DPE).  
All submissions must be addressed to the Department and must be made within the public exhibition period.

# EIS public exhibition – How to make a submission

## Writing tips



A submission can be written in bullet points or full sentences



A submission can be written in plain-English and does not require technical expertise

## Submission criteria



A submission on the HumeLink project must include the Application number SSI-36656827



A submission must include your full name and address. You can request to have your name withheld



A submission must be signed



A submission must include a statement on whether you support, object, or are providing comments on the issues raised in the EIS



Submissions can be made by an individual or a group



A group submission signed by one person is considered a single submission



Where relevant, provide reasons and/or supporting information for any conclusions made in the submission



If there is new information that should be considered, provide supporting documents



An effective submission considers the purpose of environmental impact assessment and refers to a relevant issue or key matter in the EIS

## Lodging a submission



Submissions must be sent directly to DPE. Transgrid cannot receive or send submissions to DPE on behalf of submitters



An online submission requires an account to be created on the NSW Major Project Planning Portal



Submissions must be received before midnight on the last day of the exhibition period




Online submissions must be made via the NSW Major Projects Planning Portal. Follow the step by step instructions on their website: [www.planning.nsw.gov.au/have-your-say](http://www.planning.nsw.gov.au/have-your-say)



# NSW Department of Planning and Environment (DPE) EIS Portal



# NSW Department of Planning and Environment (DPE) EIS Portal



Find a Property

My Account

myHome Planner

Development and Assessment

Insights and Demography

Have your say

Help and Training

Home

Major Projects

Projects

HumeLink

State Significant Infrastructure

Prepare EIS

HumeLink

Wagga Wagga City, Snowy Valleys, Cootamundra-Gundagai Regional, Yass Valley, Upper Lachlan Shire

Current Status: Prepare EIS

Interact with the stages for their names

✓

Want to stay updated on this project?

Notify me

Development of new transmission lines between the existing substations at Wagga Wagga and Bannaby and the proposed Maragle substation, and a new substation at Gugaa.

EPBC

This project is a controlled action under the *Environment Protection and Biodiversity Conservation Act 1999* and will be assessed under the bilateral agreement between the NSW and Commonwealth Governments, or an accredited assessment process. For more information, refer to the Australian Government's [website](#).

Attachments & Resources

Application (3)

SEARs (2)

Project Details

Application Number

SSI-30650827

EPBC ID Number

2021/9121

Assessment Type

State Significant Infrastructure

Development Type

Electricity supply

Local Government Areas

Wagga Wagga City, Snowy Valleys, Cootamundra-Gundagai Regional, Yass Valley, Upper Lachlan Shire

Contact Planner

Name

Anthony Ko

Phone

8217 2022

View project on map

Share this project

in


f

t

e

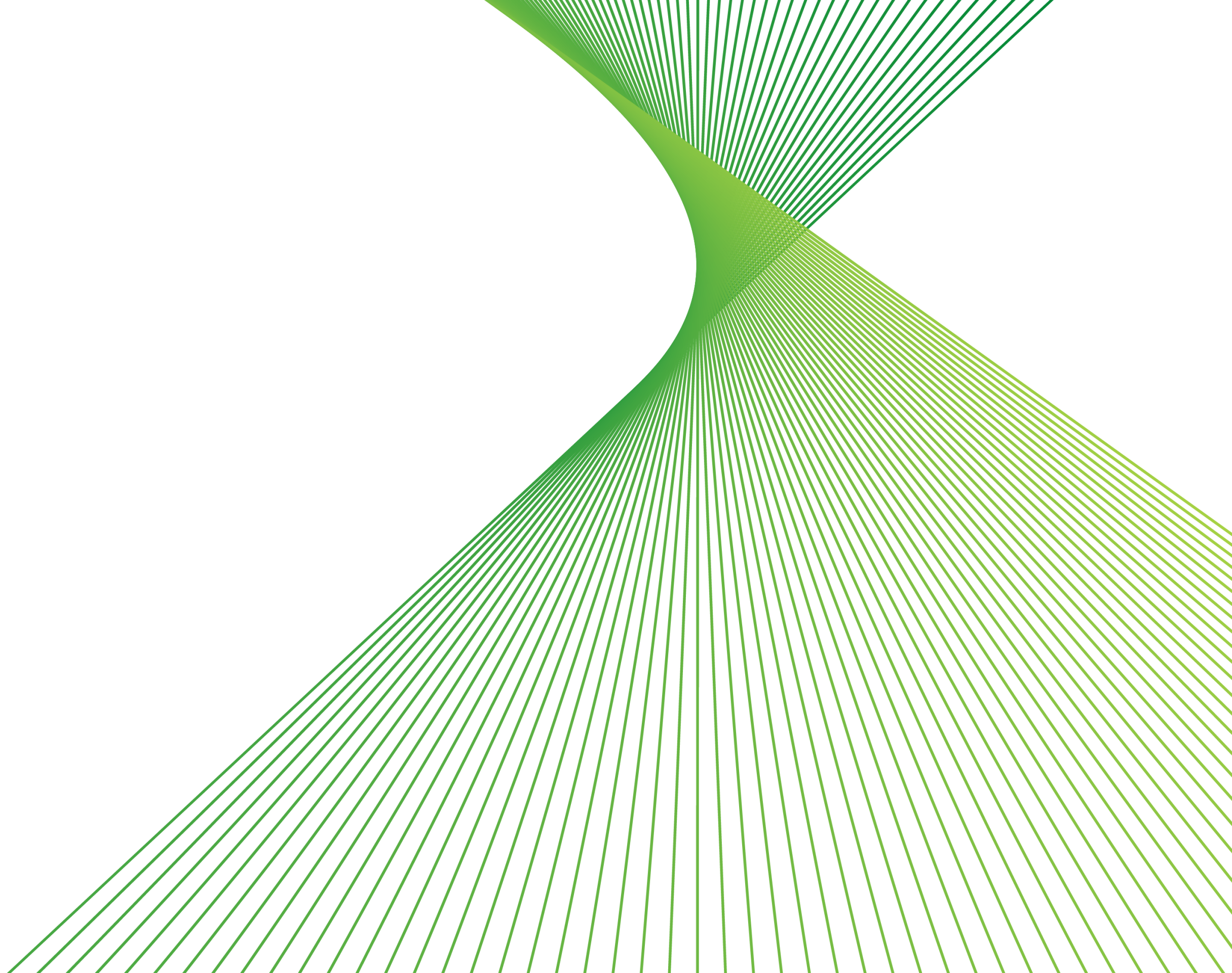
18

Official











# EIS Topics



# EIS technical studies

 Aboriginal heritage	 Agricultural land	 Air quality	 Aviation safety	 Biodiversity
 Bushfire risk	 Greenhouse gas and climate change risk	 Soils, geology and contamination	 Economic	 Electric and magnetic fields
 Hydrology and flooding	 Historic heritage	 Landscape character and visual amenity	 Land use and property	 Noise and vibration
 Social	 Surface water and groundwater	 Traffic and transport	 Sustainability	

Presented at previous CCGs

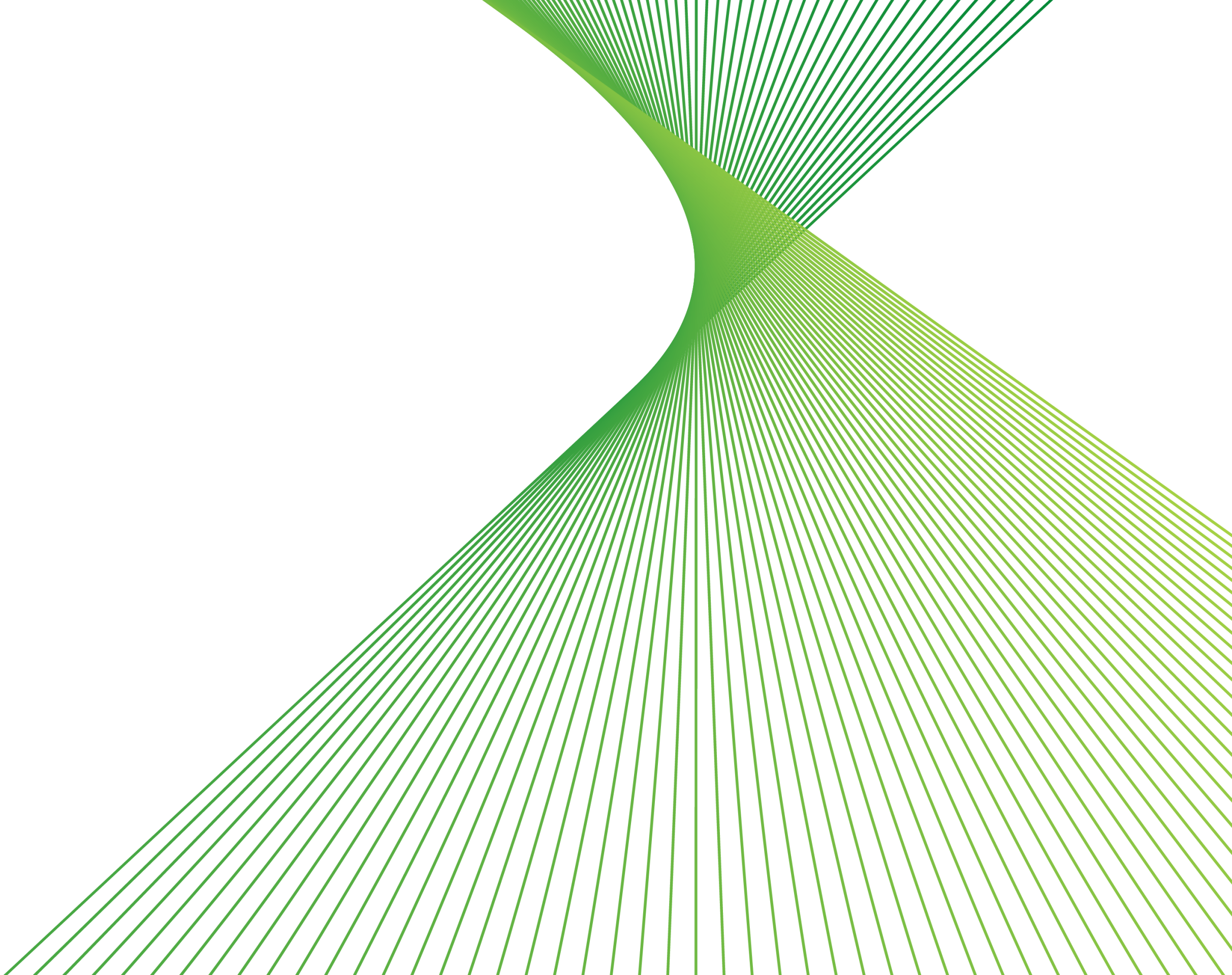
Presented today

Remaining topics covered in EIS Fact Sheets





# Biodiversity



# EIS overview – Biodiversity



*Squirrel Glider. Photos courtesy of the  
NSW Office of Environment & Heritage*

## **Purpose and scope of the assessment**

To evaluate the potential impacts to biodiversity from construction and operation of the project.

The assessment of potential biodiversity impacts was undertaken in accordance with the SEARs and Supplementary SEARs reflecting both State and Commonwealth government requirements.

The Biodiversity Assessment Method (BAM) 2020 prescribes how the assessment should be undertaken:

- key principle of avoiding or minimising impacts
- for impacts that cannot be avoided, biodiversity offsets are required



# EIS overview – Biodiversity

## Assessment methodology

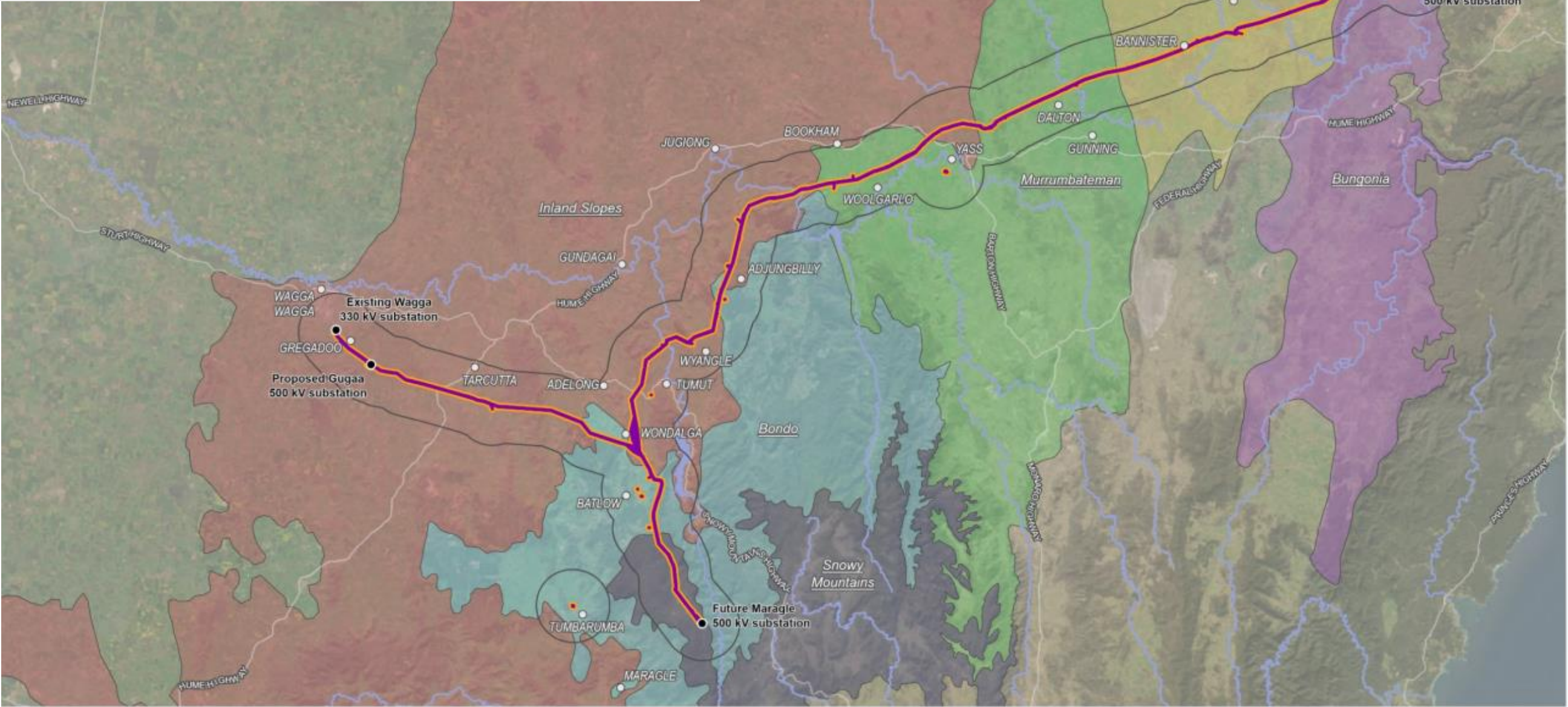
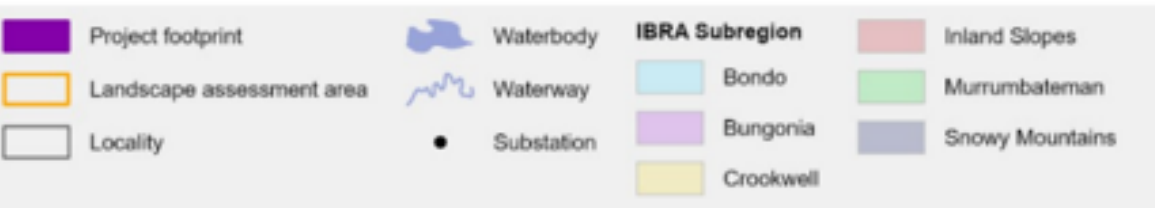
- Desktop review of existing data and reports
- Defining the study area and the disturbance footprint
- Seasonal field surveys
- Assessing impacts in accordance with prescribed methods
- Identifying mitigation measures to minimise potential impacts
- Determining offset requirements for residual impacts



*Yass Daisy. Photos courtesy of the NSW Office of Environment & Heritage*



# EIS overview – Biodiversity



## BDAR Study area

### Landscape assessment area:

Project footprint plus a 500m buffer

### Project locality:

Project footprint plus a 10km buffer

### Indicative disturbance area:

Indicative area of land that would be temporarily or permanently cleared for the project.



# EIS overview – Biodiversity

## Assessment outcomes

Assessment carried out adopts a precautionary (i.e conservative) approach, especially where there are unknowns. May lead to scale of impacts looking worse. There are opportunities for impact reduction during design refinement.

Potential impacts include:

- loss of vegetation from clearing
- loss of habitat for threatened ecological communities or fauna species
- disturbance to wildlife from construction activities
- spread of weeds, pests and pathogens
- sedimentation impacts on water quality affecting aquatic species
- habitat fragmentation from the creation of an easement
- potential fauna collisions or electrocution due to the transmission lines



*Blue-tongued Greenhood - EPBC Act listed species*

# EIS overview – Biodiversity

## Proposed mitigation measures

**Design** – refinement of the disturbance footprint during detailed design and construction

**Construction** - a Biodiversity Management Plan will be developed as part of the CEMP. Will be supplemented by a:

- Connectivity Strategy
- Hollow and Nest Strategy

Other measures in the CEMP to address erosion and sedimentation, air quality, noise and traffic impacts.

**Operations** – TG guidelines and procedures for maintenance including vegetation management

Residual biodiversity impacts will be offset in accordance with BAM through the HumeLink Biodiversity Offsets Delivery Strategy.



Example of Alpine wetland/ fen habitat





# Aboriginal Heritage

# EIS overview – Aboriginal Heritage

## Purpose of the assessment

To assess the potential impacts on Aboriginal heritage sites and objects, and archaeological heritage items.

## Study area

The Aboriginal heritage study area is defined by the project footprint plus a one-kilometre-wide buffer.



*Example of test excavation pit and  
Aboriginal artefact*

## ACHAR methodology

- Conducting a search of the Aboriginal Heritage Information Management System (AHIMS) database
- Developing a predictive model to help determine presence of Aboriginal heritage sites
- Conducting field surveys with registered Aboriginal parties (RAPs) to identify archaeological sites and potential archaeological deposits (PADs)
- Completing test excavations at accessible PADs
- Assessing potential direct and indirect impacts on Aboriginal heritage

Consultation with Local Aboriginal Land Councils, RAPs and Traditional Owners has been ongoing throughout the assessment process.



# EIS overview – Aboriginal heritage



*Example of a scarred tree*

## **Assessment outcomes**

Precautionary approach adopted

Summary of ACHAR findings for the project footprint:

- 90 Aboriginal heritage sites (incl. 79 stone artefact sites)
- eight potential archaeological deposits
- three modified trees
- does not impact known Aboriginal reserves or early historical properties where documented significant historical interactions with Aboriginal people occurred
- one significant Women's site identified at Derringullen Creek will be avoided



# EIS overview – Aboriginal heritage

## Proposed mitigation measures

Impacts would be reduced through implementation of avoid, minimise and mitigate principles.

Heritage Management Plan will be developed with RAPs and implemented as part of the CEMP:

- Where impacts cannot be avoided, surface artefacts and subsurface deposits may be salvaged, in consultation with RAPs as a measure to mitigate harm
- Unexpected finds procedure
- Heritage monitoring

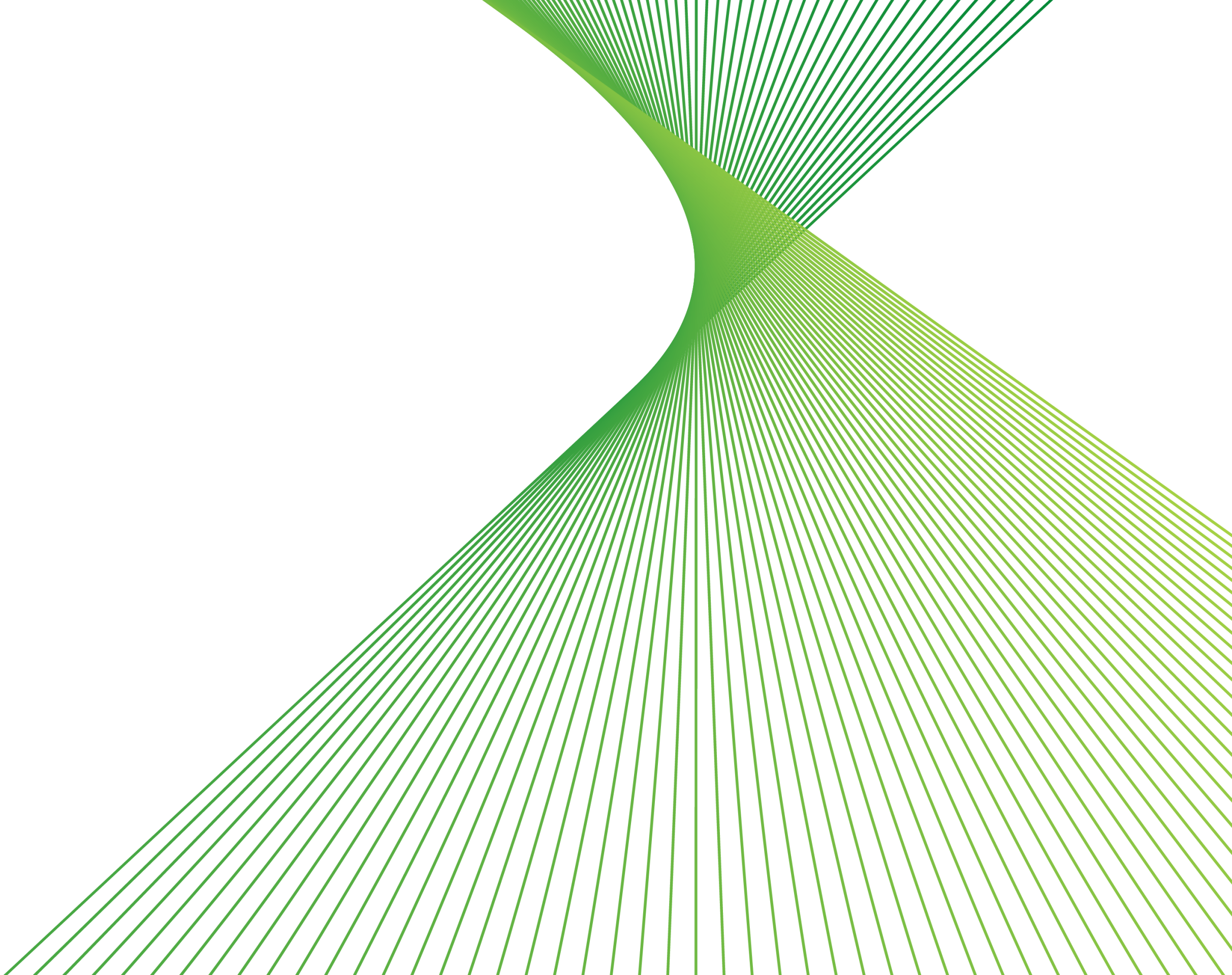


*Aboriginal cultural heritage field survey*





Social



# EIS overview – Social



## Purpose of the assessment

Evaluate potential changes to way of life, community, accessibility, culture, health and wellbeing during construction and operation of the project – categories as per DPE SIA Guideline, 2023

## Study area

Referred to as "social locality"

1. Local government level
2. Key communities' level
3. Project footprint level.



# EIS overview – Social

## Assessment methodology

- Defining the social locality
- Establishing the social baseline
- Engaging with communities and stakeholders
- Reviewing relevant state, regional and local plans and policies
- Reviewing other relevant EIS technical reports for the project
- Assessing identified impacts – likelihood (probability) and scale (magnitude)
- Identifying and recommending mitigation measures



Tumut, NSW



# EIS overview – Social

## Assessment outcomes



### Way of Life

- Potential sleep disturbance from noise and vibration from construction
- Reduced availability of accommodation from increased demand from construction workers



### Community

- Positive social impacts through new relationships and interactions
- Opportunities for investment through Transgrid's support initiatives



### Accessibility

- Temporary construction traffic impacts
- Positive and negative impacts from temporary increase in the demand for social infrastructure or services
- Temporary increase in demand for goods and services



### Culture

- Potential visual amenity impacts on heritage items
- Ability of Aboriginal people to maintain and develop culture
- Opportunities for local industry participation, including Aboriginal businesses



# EIS overview – Social

## Assessment outcomes



### Health & wellbeing

- Dust generation and noise and vibration during construction potentially impacting amenity and sleep
- Increased stress and uncertainty for affected landowners



### Livelihoods

- Positive benefits from employment and upskilling opportunities
- Increased tourism from temporary workers and visitors during construction
- Property-related impacts from construction and operation



### Surroundings

- Localised and temporary visual amenity impacts from construction activities
- Changes to visual amenity from transmission line structures



### Decision-making systems

- Potential impacts to farming operations and businesses from acquisitions, easements and temporary leasing arrangements

# EIS overview – Social

## Mitigation measures

- Micro-siting of transmission line structures
- Investigation of additional temporary worker accommodation facilities
- Consultation with local service providers
- Tailored plans to manage impacts, promote opportunities and achieve a positive legacy
- Ongoing engagement with affected landowners, the community and interested organisations
- Individual Property Management Plans (PMPs)



*500kV transmission line near Tarana*



# Questions



# Thank you

1800 31 73 67 (free call)  
humelink@transgrid.com.au  
[transgrid.com.au/humelink](https://transgrid.com.au/humelink)

HumeLink Community  
Engagement Team, PO BOX A1000,  
Sydney South, NSW 1235

