

Mount Piper to Wallerawang Transmission Line Upgrade Project

Preferred Route Report

December 2023

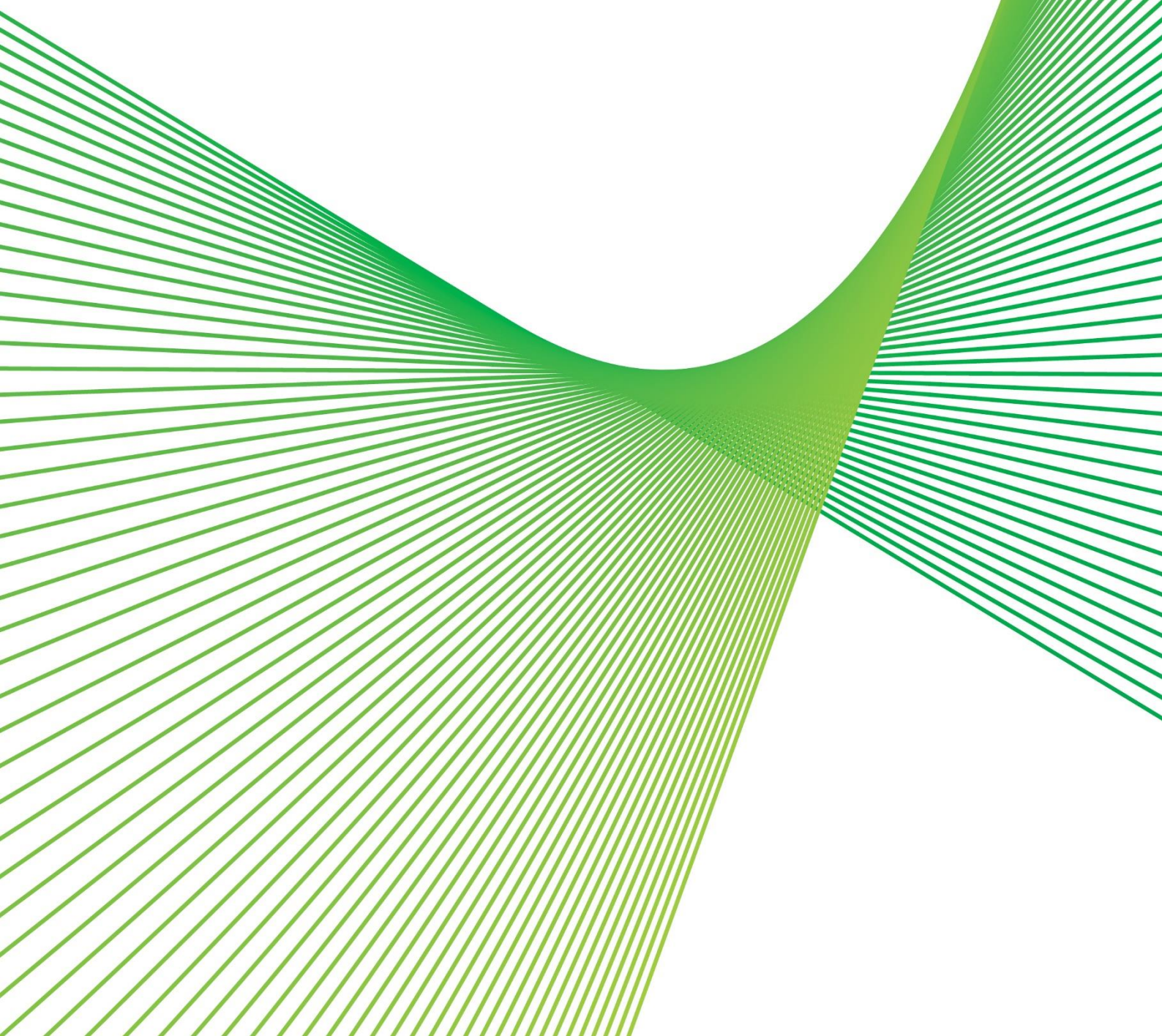


Table of Contents

Acknowledgement of Country	5
Community, stakeholder and landowner engagement summary.....	6
Executive Summary	6
1. Introduction	8
Why is this project needed?	8
What prompted the need for this project?	9
What are the expected benefits?	9
How is a potential route identified?	9
What is in the area of interest?	12
Why is the project needed?	13
2. How engagement has shaped route selection.....	13
What are our engagement objectives when selecting a preferred route?	13
What stakeholder and community engagement framework did we use?	14
Who did Transgrid consult and what were their concerns?	16
When did Transgrid seek community and stakeholder feedback?	16
What did Transgrid do during consultation?	17
3. Exploring the different route options.....	19
What are the route options Transgrid investigated?	19
Options A-1 and A2	19
Options B-1 and B-2	20
Option B-3.....	21
Option B-4.....	22
Option B-5.....	24
Option C-1	24
Option C-2	25
Options D and E	26
Did Transgrid speak with Traditional Owners?	30
What feedback did stakeholders provide about the route options?	30
Feedback from the community about the route options.....	31
4. The preferred route	34
Why was this route selected?.....	34
Minimised impacts to private residential landowners	34

Impacts to key landowners	34
Co-locating with existing easements in the State Conservation Area	34
Listening to Traditional Owners	35
5. Next Steps	37
What is the process for getting this project approved?	37
What is included in the Environmental Assessment?	39
Social Impact Assessment	39
How can I provide my feedback?	39
 Figure 1. NSW Renewable Energy Zones (EnergyCo, 2023)	 8
Figure 2. Transgrid's transmission line route selection process, adopted in 2023.....	11
Figure 3. Map of existing Transgrid transmission lines in area of interest	12
Figure 4. Indicative figures showing typical width of easements and tower heights	13
Figure 5. IAP2 Public Participation Spectrum	15
Figure 6. Indicative map of Option A-1 and A-2.....	19
Figure 7. Indicative map of Options B-1 and B-2.....	21
Figure 8. indicative map of Option B-3.....	22
Figure 9. indicative map of Option B-4.....	23
Figure 10. Photo of current 45 m easement within Gardens of Stone SCA. Option B-4 proposes to increase the easement by 15 m to the north (left hand side).	23
Figure 11. Indicative map of Option B-5.	24
Figure 12. Indicative map of Option C-1	25
Figure 13. Indicative map of Option C-2.	26
Figure 14. Indicative map of Option D	27
Figure 15. Indicative map of Option E.....	28
Figure 16. Detailed GIS map of route options	29
Figure 17. Map of preferred route option B4.....	36
Figure 18. Project approval pathway.	38
 Table 1. Community sentiment legend	 31
Table 2. Feedback relating to landowner livelihoods, business activity and property requirements	32
Table 3 Community sentiment legend	32
Table 4. Feedback relating to First Nations cultural values and practices and traditional ecological knowledge.	32
Table 5 Community sentiment legend.	33

Table 6. Feedback relating to community concerns, issues and land uses to inform the route selection options	33
Table 7. Community sentiment legend.	33
Table 7. Feedback relating to sentiment towards transmission lines and easement requirements.....	33

Acknowledgement of Country

Transgrid acknowledges the Wiradjuri, Gundungurra and Darug people as the Traditional Owners of the lands on which the proposed transmission line has been considered and pays respect to Elders past, present and future. Traditional Owners of these lands have lived in the area for thousands of years and have an enduring custodianship and connection over the land and waterways of this region.

In the 2021 Census, 7.8% of the population of Lithgow LGA, identified their background as Aboriginal and/or Torres Strait Islander. Transgrid acknowledges Australia's First Nations Peoples as the traditional owners of the lands, waters and communities where we live, work, learn and play today. We pay our respects to Elders past, present and emerging.

Community, stakeholder and landowner engagement summary

Transgrid recognises the vital role that landowners and the community have in the planning and delivery of our projects. We are committed to talking to the community to help us shape the best possible solution.

After initial assessments were completed, we went out to stakeholders and the community to consult on potential route options in mid-late 2022. As a result of the feedback received, we developed and investigated further options and consulted with key stakeholders on all options over the next 12 months to mid-late 2023.

Key feedback which emerged repeatedly were that the preferred route should:

- use existing transmission line routes and easements
- minimise disturbance to Gardens of Stone State Conservation Area
- minimise environmental impacts and vegetation clearing
- minimise impacts to business operations
- avoid private residential land

Some stakeholders requested that we investigate the viability of undergrounding the line, which is addressed in this report.

Community and stakeholder feedback has played a key role in shaping our preferred route. The route selection process must strike a balance between stakeholder preferences and various constraints including engineering, constructability, environmental impacts and cost, to ensure that the outcome is prudent and efficient.

Overall, eleven possible routes were assessed. Through this process we have now identified one of these options as the preferred route.

Executive Summary

The NSW Government plans to develop five Renewable Energy Zones (REZs) in the state, aiming to increase renewable energy generation and reduce emissions from traditional energy sources e.g. coal and gas.

The first REZ is being developed in the Central-West Orana region with the goal of adding new energy generation capacity to NSW. To support the connection of this REZ, upgrades are required within Transgrid's existing transmission network.

The Mount Piper to Wallerawang Transmission Line Upgrade Project proposes to construct a new 330 kV (kilovolt) transmission line between the existing Mount Piper and Wallerawang substations. The transmission line must be located on an easement or corridor of land suitably wide enough to protect public safety, ensure the line can be maintained and operate safely and reliably. Certain activities are restricted on easements, and while we look to minimise impacts, route selection can potentially affect future land uses. The typical easement width for a 330 kV transmission line is 60 m.

The project area is situated in the Lithgow City Council Local Government Area (LGA), bounded by the Castlereagh Highway, Coss River, Gardens of Stone State Conservation Area (SCA) and Mount Piper

Power Station. The surrounding area consists of industrial, rural and residential land uses, as well as coal mines that have historically provided employment in the region.

Transgrid used a structured route selection process to assess all potential route options on a number of different constraints and opportunities. In 2022, the project was launched publicly, and stakeholder and community feedback guided the route options assessment process. We listened to views on all viable options that are described in detail within this report and acted on their feedback.

The eleven possible routes were labelled using letters and numbers. Options A-1, A-2, D, and E were discontinued earlier in the assessment phase due to environmental, cost and operational constraints. The remaining feasible options assessed in the latter stages were Options B-2, B-4, B-5 and C-2.

After careful assessment and consultation, Transgrid selected a preferred route that utilises an existing 132 kV transmission line easements and lines between Mount Piper and Wallerawang. Existing easements will be widened from 45 m to 60 m to accommodate the new infrastructure, which is unavoidable and necessary to ensure the safe and reliable operation of the line and to enable CWOREZ. The route will traverse the Gardens of Stone State Conservation Area and Centennial Coal land, which has been disturbed by past activities. Environmental offsets will help mitigate this impact. No new private landowners will be impacted by a new easement or infrastructure.

This report outlines the process to select the preferred route and outlines the key role community and stakeholder feedback has played in the process.

1. Introduction

Transgrid is proposing to deliver a new 330 kV (kilovolt) transmission line between the existing Mount Piper and Wallerawang substations, located in the LGA of Lithgow and on the lands of the Wiradjuri, Gundungurra and Darug people.

Why is this project needed?

The NSW Government's *Electricity Strategy*¹ and *Electricity Infrastructure Roadmap*² plans to deliver the state's first five Renewable Energy Zones (REZs). This builds on the *NSW Transmission Infrastructure Strategy*³ and supports the implementation of the Australian Energy Market *Operator's Integrated System Plan*.⁴

The NSW Government is in the development phase for the first REZ in the Central-West Orana region, which is around Dubbo and Wellington on the land of the Wiradjuri, Wailwan and Kamilaroi people. Other REZ areas include Bathurst, Forbes, Dubbo and Coonabarabran. New transmission infrastructure will allow electricity to flow from these new renewable energy generators, such as solar and wind farms, to the rest of the NSW network.

The Mount Piper to Wallerawang Transmission Line Project is located outside of the REZ area but is impacted by the power flows that will be generated by the new renewable energy generators coming online. Therefore, Transgrid is required to upgrade a number of transmission lines within its existing network.



Figure 1. NSW Renewable Energy Zones (EnergyCo, 2023)

¹ www.energy.nsw.gov.au/nsw-plans-and-progress/government-strategies-and-frameworks/nsw-electricity-strategy

² www.energy.nsw.gov.au/nsw-plans-and-progress/major-state-projects/electricity-infrastructure-roadmap

³ www.energy.nsw.gov.au/nsw-plans-and-progress/government-strategies-and-frameworks/nsw-transmission-infrastructure

⁴ <https://aemo.com.au/en/energy-systems/major-publications/integrated-system-plan-isp>

What prompted the need for this project?

The development of the Central West Orana REZ (CWOREZ) has created a current and future demand for more electrical infrastructure to facilitate the growth in electricity generation in the Central Tablelands area. The Mount Piper to Wallerawang Transmission Line Project will increase the capacity of electrical infrastructure to support the CWOREZ.

EnergyCo is responsible for ensuring that the new network infrastructure is developed to connect the CWOREZ to the existing grid, delivering affordable electricity to NSW. To achieve this outcome, EnergyCo is leading the delivery of the CWOREZ Transmission Project. EnergyCo has appointed Transgrid in its capacity as the State's jurisdictional transmission planner to coordinate the delivery of complementary upgrades to Transgrid's existing infrastructure network.

What are the expected benefits?

The project will strengthen and reinforce the grid in the Central Tablelands region and help to ensure that power from the CWOREZ can flow into the grid and to consumers.

The project will deliver a range of benefits including:

- Cheaper electricity – improving the affordability of electricity for consumers by increasing supply and driving down electricity prices
- Improved reliability – by delivering large amounts of new energy and, strengthening and reinforcing the grid in the local region
- Reduced emissions and a greater mix of renewable energy in the National Electricity Market
- New local jobs – opportunities for local workers and businesses during construction

How is a potential route identified?

Transgrid applies a structured route selection process when identifying proposed options for transmission lines, which is influenced by stakeholder and community input throughout (see Figure 2). The project developed a multi criteria analysis relevant to the local area, investigated and assessed a number of different factors when investigating routes that included:

- Social and community views
- Aboriginal heritage, including significant cultural heritage sites
- Biodiversity including flora and fauna
- Other environmental features like soils and hydrology
- Intensive agriculture
- Impacts to the community and local industries
- Licensed airstrips
- Engineering e.g., where it can be built and length of corridor
- Alignment to existing infrastructure like roads and power lines
- Hazards such as bushfire and extreme weather

- Cost constraints
- Network resilience
- Topography, the features of the land e.g., gradient, valleys, rivers
- Land use considerations, including existing or planned use for agriculture, tourism and industry.

The final assessment of route options is accompanied by early field studies where possible.

We are currently in Phase 4 (preferred route identification) of the process and will commence Phase 5 (environmental assessment) in early 2024.






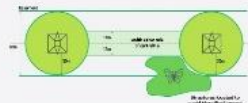
Phase	Phase 1 Identify need and potential technical options	Phase 2 Evaluate technical options area of interest	Phase 3 Corridor identification	Phase 4 Preferred route identification	Phase 5 Environmental assessment	Phase 6 Detailed design and easement finalisation
Diagrammatic Example						
Area		Typically between 10 and 50 kilometres (depending on project scale)	Typically between one and 10 kilometres wide	Typically up to around one kilometre wide	Typically up to 200 metres wide (with the potential for wider area(s) up to one or more kilometres wide where further investigation may be required)	Typically around 80 metres (depending on project requirements)
Purpose	To confirm the project requirements and identify technical options to address those requirements	To investigate the range of technical options in order to define a prudent and efficient project solution that aligns with the identified functional requirements for the project within a broad area of interest.	To identify and assess feasible corridor or site location options within the area of interest based on community/stakeholder feedback and high level environmental, technical, social and cost considerations in order to identify a preferred corridor or site area.	To identify a preferred route for the project that can be used to undertake appropriate environmental assessment.	To further refine the route through specific landowner consultation and additional data gathered during the environmental impact assessment.	To finalise the project easement or site boundary in consultation with the landowner.

Figure 2. Transgrid's transmission line route selection process, adopted in 2023.

What is in the area of interest?

The area of interest is bounded by the Castlereagh Highway to the north, Coxs River to the east, Gardens of Stone State Conservation Area with Pipers Flat Road to the south and the Mount Piper Power Station to the west.

Transgrid already operates transmission lines and other infrastructure within the area of interest. We have substations located at Mount Piper and Wallerawang. The two existing transmission lines between the substations are:

- Line 70/71, with a 60 m wide easement with 330 kV double circuit lines (yellow line below)
- Line 94E, with a 45 m wide easement with a single 132 kV line (red line below)

Wallerawang 330 kV substation is located directly south of the Main Western Railway Line and south-east of the Wallerawang Power Station, which was decommissioned in 2014. There is also a second 132 kV substation in Wallerawang that is located approximately 350 m west of the 330 kV substation and provides the infrastructure for Transmission Line 94E.



Figure 3. Map of existing Transgrid transmission lines in area of interest

Figure 4 below shows the typical width of easements and tower heights that Transgrid considers when planning transmission lines. The Mount Piper to Wallerawang Transmission Line project is proposing to build new 330 kV double circuit towers. There are two tower structures in the image below that are double

circuit 330 kV and Transgrid will confirm which structure is applicable to this project once detailed design has been completed in 2024.

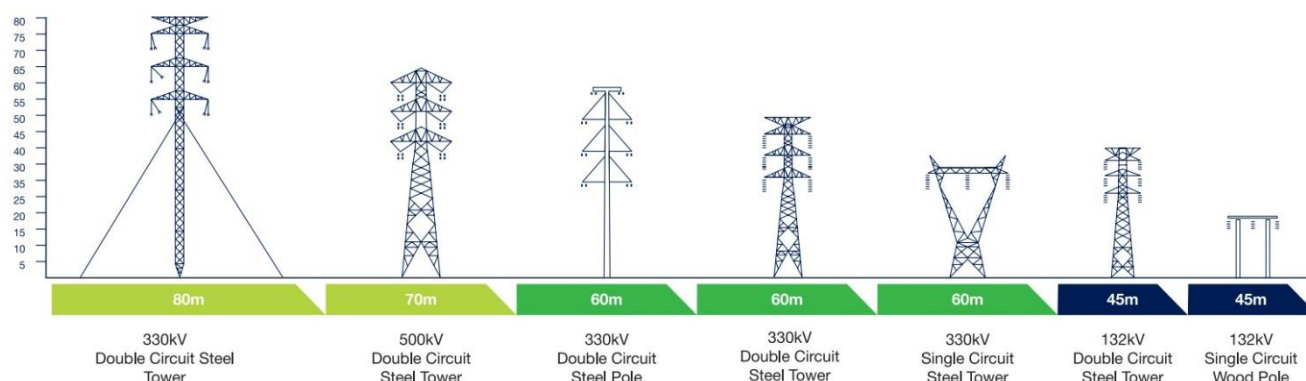


Figure 4. Indicative figures showing typical width of easements and tower heights

Why is the project needed?

The strategic objectives of the project are to:

- Support the NSW Government's development of the CWOREZ
- Increase the transmission capacity of the existing network at modest cost to consumers

At a project level, we aim to:

- Identify and assess impacts and benefits against community and stakeholder, environment and planning approvals, property access and acquisition, technical and design, construction and operation, program and scope, as well as cost and regulatory considerations
- Develop a route that balances the different project constraints and opportunities with the aim to minimise impacts by:
 - Where possible, utilise or parallel existing transmission easements or use other complementary land use areas such as those that have been previously disturbed.
 - Keep the transmission line as straight as possible by selecting the shortest possible route between two points (substations)
 - Deliver a solution that delivers value for consumers.

2. How engagement has shaped route selection

What are our engagement objectives when selecting a preferred route?

The objectives for engaging with the community to identify a preferred route was focused on:

- Ensuring that the engagement and communication process provides stakeholders with just and fair opportunities to understand and provide input into transmission planning through consultation

- Ensuring that potential community and social impacts are identified early, understood and included in balanced route and corridor selection process
- Engaging early to allow potential concerns, issues and community knowledge to be identified
- Identify First Nation's people that have a connection to the lands on which the project is on and engage on the route options
- Establish a reputation for transparency and two-way communication by providing clear information about the project and route selection process

Our aim was to achieve this by:

- Providing opportunities for the community to comment on the project route options
- Engaging the community through a wide range of accessible and inclusive channels and platforms
- Collecting key sentiment, ideas, thoughts and considerations from the community and key stakeholders through multiple communication channels

What stakeholder and community engagement framework did we use?

Transgrid developed an internal Communication and Stakeholder Engagement Plan to guide the engagement process. This document is typical in projects of this size and provides a structure on how we should be engaging with community and stakeholders.

The engagement and consultation process followed the International Association for Public Participation (IAP2) Spectrum of Public Participation. The Spectrum is an internationally recognised tool for planning public participation in infrastructure projects. The Spectrum helps to establish the public's role in the engagement process and their impact on the decision-making outcomes of a project. The consultation activities for this phase of engagement have been delivered within Inform, Consult and Involve stages. This means the project team has:

- Provided the public with balanced and objective information.
- Kept stakeholders informed, listened to, and acknowledged, concerns and aspirations and provided feedback on how public input influenced the decision.
- Worked with the community to ensure concerns and aspirations are directly reflected in the alternatives developed and provided feedback on how public input directly influenced the decision.

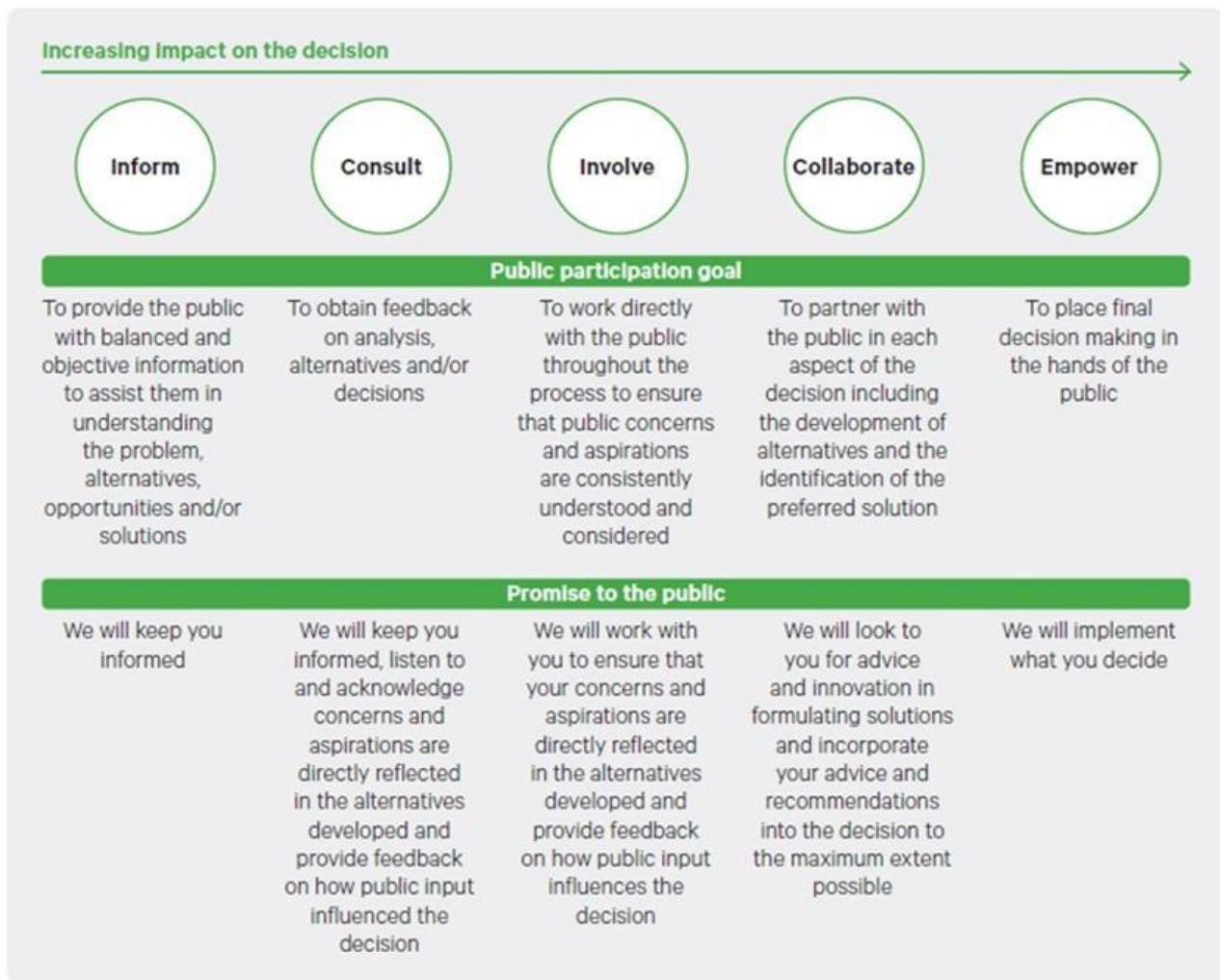


Figure 5. IAP2 Public Participation Spectrum

Who did Transgrid consult and what were their concerns?

Early in the planning phase, Transgrid identified stakeholders who would reasonably be expected to have an interest in the project or be directly or indirectly impacted by possible route options and Transgrid's operations in the region.

Once we identified stakeholders, we focused on effective and meaningful engagement to inform and support our decision making.

To obtain feedback, a number of stakeholders were contacted for their direct input. These included:

Stakeholder group	Detail
Landowner	National Parks and Wildlife Service
Landowner	Centennial Coal (Owner of Springvale Colliery and Ivanhoe Coal Pty Ltd)
Landowner	Greenspot Wallerawang Pty Ltd
Landowner	EnergyAustralia (owner of Mount Piper Power Station)
Landowner	Banpu Energy (owner of Pinecrest Solar Farm)
Landowner	Transport Asset Holding Entity of NSW (TAHE) and UGL (partner of Transport for NSW)
Landowner	WaterNSW
Landowner	Private residential landowners have not been named to protect privacy
Traditional Owners	Bathurst Local Aboriginal Land Council
Traditional Owners	Mingaan Wiradjuri Aboriginal Corporation
Traditional Owners	Warrabinga Native Title Claimants Aboriginal Corporation
Elected representative	Lithgow Shire Council
Elected representative	Paul Toole (State Member for Bathurst)
Elected representative	Andrew Gee (Federal Member for Calare)
Environmental advocacy group	Lithgow Environment Group
Environmental advocacy group	Wilderness Australia

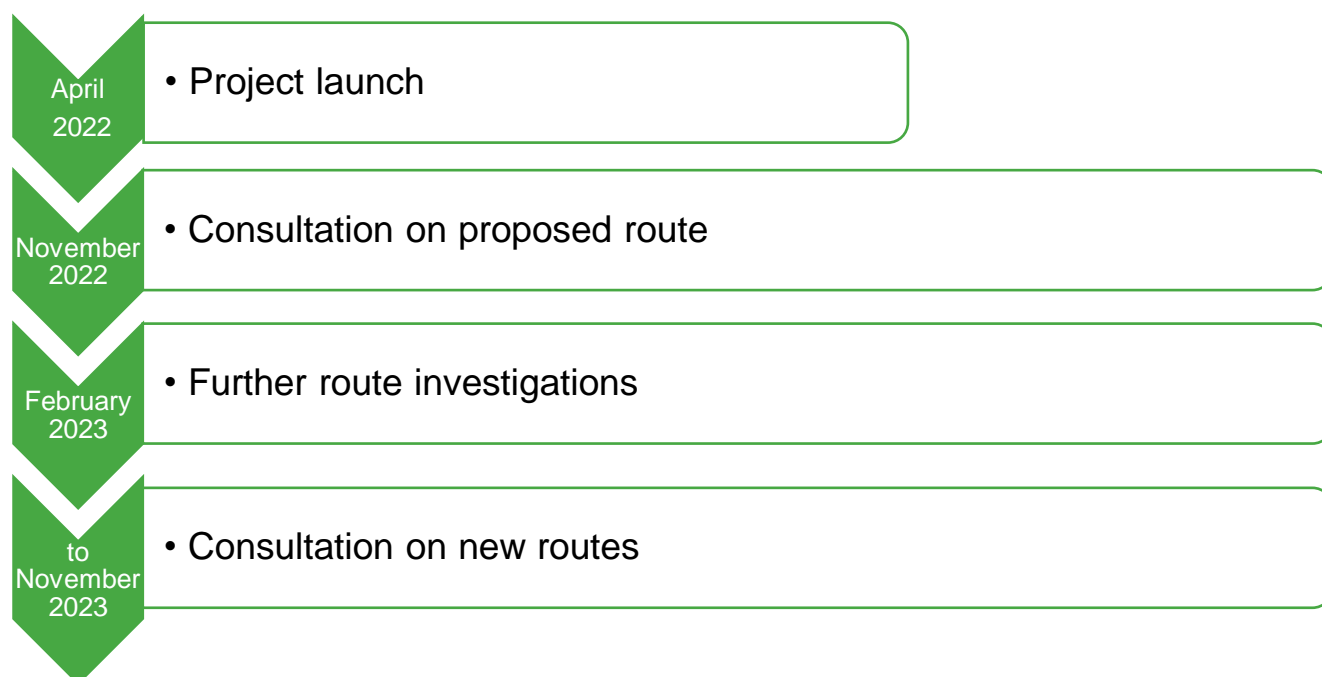
Nearby landowners, businesses and wider community members have not been identified in the table above but were included in the consultation process.

The detail feedback gathered from stakeholders can be found in Appendix – Summary of meetings.

When did Transgrid seek community and stakeholder feedback?

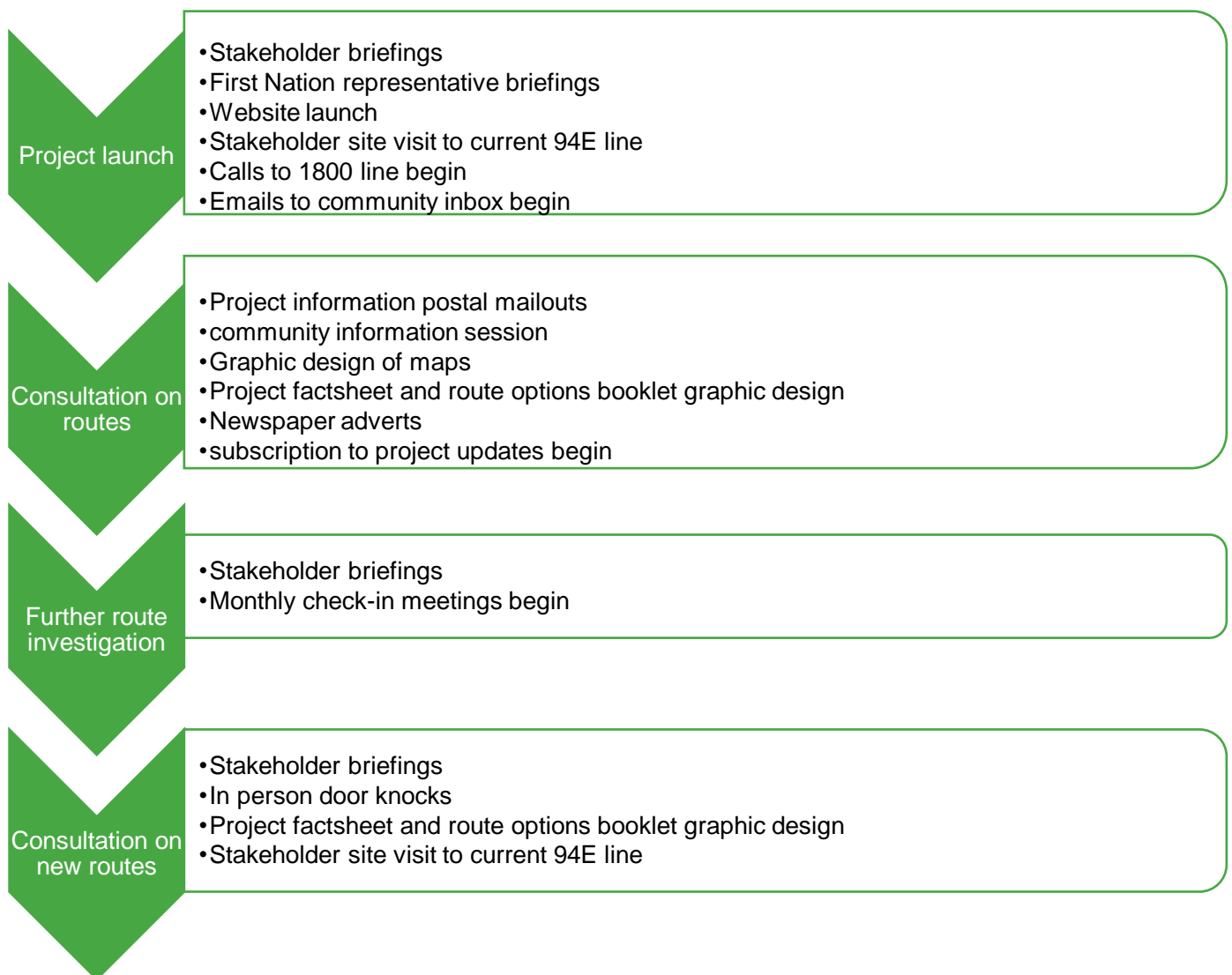
Engagement activities have been ongoing throughout all phases of the project. The focus of this phase of engagement is to provide an overview to key stakeholders of what route options are being proposed and seek feedback. Feedback was used to help select a preferred route option that minimise impacts.

The following timeline summarises the engagement activities during 2022 and 2023.



What did Transgrid do during consultation?

A key aim of community and stakeholder consultation was to engage through a wide range of accessible and inclusive channels and platforms. We used the following communication channels to share information and receive feedback:



During the consultation period, Transgrid announced two rounds of community grant funding and produced communication materials to promote this scheme. Local community members were encouraged to apply. This grant scheme was kept separate from the route refinement process.

3. Exploring the different route options.

The below section outlines all the route options we explored and the reasons behind why they were rejected or accepted.

What are the route options Transgrid investigated?

This section sets out a high-level summary of analysis for each option Transgrid assessed and key reasons for rejecting or pursuing each route option.

Options A-1 and A2

Options A-1 and A-2 are located adjacent to the existing 330 kV Line 70/71 and require a new 60 m easement.

These options include travelling approximately 3 km through the Gardens of Stone SCA and through heavily vegetated areas with a new 60 m wide easement. Therefore, to enable the new easement, significant clearance of vegetation would be required. This clearance would have the potential for significant biodiversity impacts. We received feedback from stakeholders that the amount of vegetation clearing required in the Gardens of Stone SCA was unacceptable.

Therefore, Options A-1 and A-2 are deemed not feasible and are not considered further.

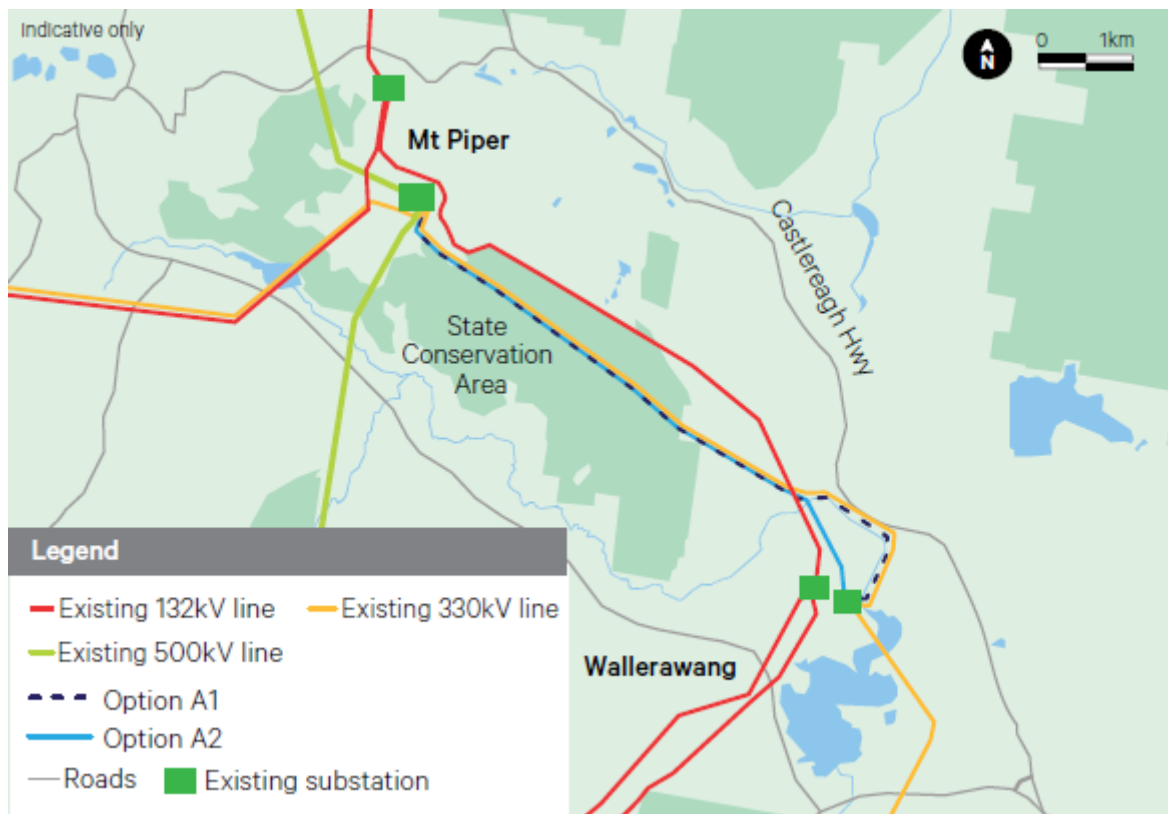


Figure 6. Indicative map of Option A-1 and A-2

Options B-1 and B-2

Option B-1 exits the Wallerawang substation following the 132 kV Line 94E to the northwest and crosses over Main Street. This direct route impacts the entrance of the township of Wallerawang and in particular:

- the St. John the Evangelist Church (State heritage listed church on Main Street)
- the Black and Gold Motel
- private residences

The combined impact to the items, landholders and community members listed above, deemed this option as unacceptable in comparison to other options.

Therefore, Option B-1 is deemed not feasible and not considered further.

Option B-2 starts northeast of the Wallerawang 330 kV Substation and runs west alongside an existing transmission line 94E. It then crosses over to the north side between Main Street and the rail line. The route continues until it reaches the existing 132 kV Line 94E. This route passes along the northern boundary of the Gardens of Stone SCA and adjacent to the Springvale Coal Services facility. Option B-2 was chosen to minimise impacts to landowners by following existing transmission line easements.

Option B-2 then reaches 132 kV Line 94E. The new double circuit would require increasing this existing 45 m wide easement to 60 m. This 15 m increase adds 7.5 m to each side of the existing 45 m easement of 132 kV Line 94E.

After consulting on this route with stakeholders and community, we received feedback that this option would result in a degree of vegetation clearing that was unacceptable in the Gardens of Stone SCA when compared to other options. Transgrid are committed to finding the best possible solution for landowners and took the decision to reject B-2 as the preferred route due to stakeholder opposition and potential environmental impacts.

Therefore, Option B-2 is deemed not feasible and not considered further.

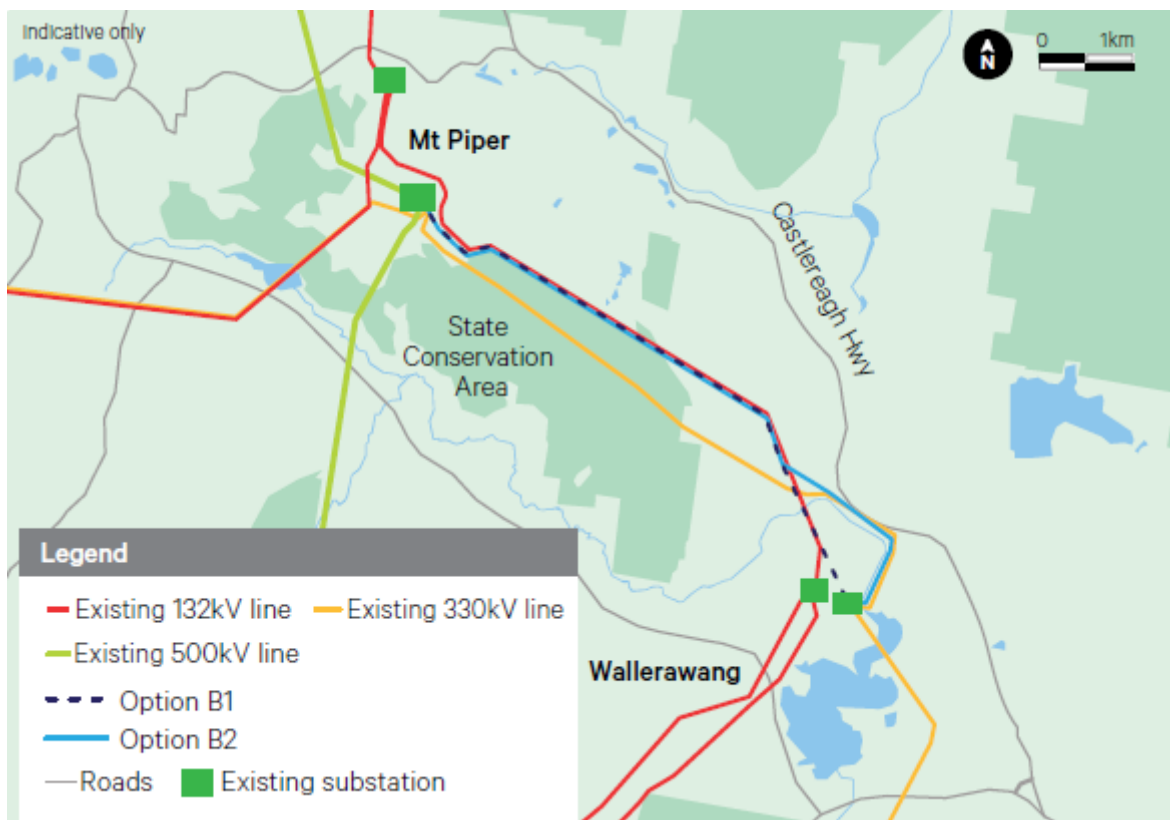


Figure 7. Indicative map of Options B-1 and B-2

Option B-3

Option B-3 (Figure 8) heads northeast from the Wallerawang substation and generally follows the 330 kV Line 70/71 for the first 3km. It then follows Line 94E with a diversion into the Springvale Coal Services facility, north of the Gardens of Stone SCA.

Within the Springvale Coal Services facility (directly north of the Gardens of Stone SCA) there is a large Reject Emplacement Area (REA). After stakeholder feedback, Transgrid were advised that the option involving moving the REA would require several years lead time and significantly impact their operations to the extent that it would become inoperable.

Therefore, Option B-3 is deemed not feasible and not considered further.

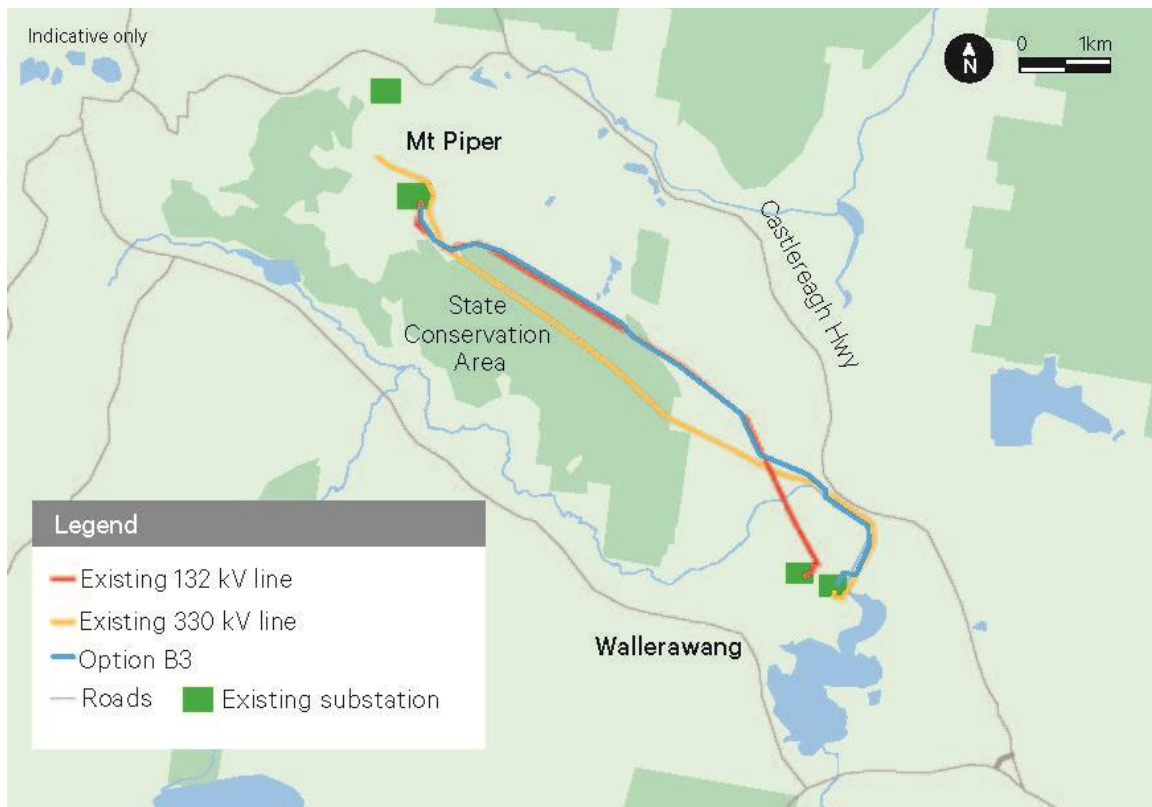


Figure 8. indicative map of Option B-3

Option B-4

Transgrid received valuable feedback on proposed Option B-2 (Figure 9) and as a result, investigated a new Option B-4.

It follows the similar route as Option B-2, however, when Option B-4 reaches 132 kV Line 94E, the new double circuit would require increasing this existing 45 m wide easement to the required 60 m easement. This increase will be achieved by adding 15 m to the north of the existing 45 m easement of Line 94E. Due to the proximity of the shared property boundary of Springvale Coal Services facility and the Gardens of Stone SCA, this extension of the existing easement to the north represents the lowest impact overall because it uses an existing transmission line easement, which would impact the smallest number of landowners and minimises impact on the environment.

Therefore, Option B-4 is the preferred option.

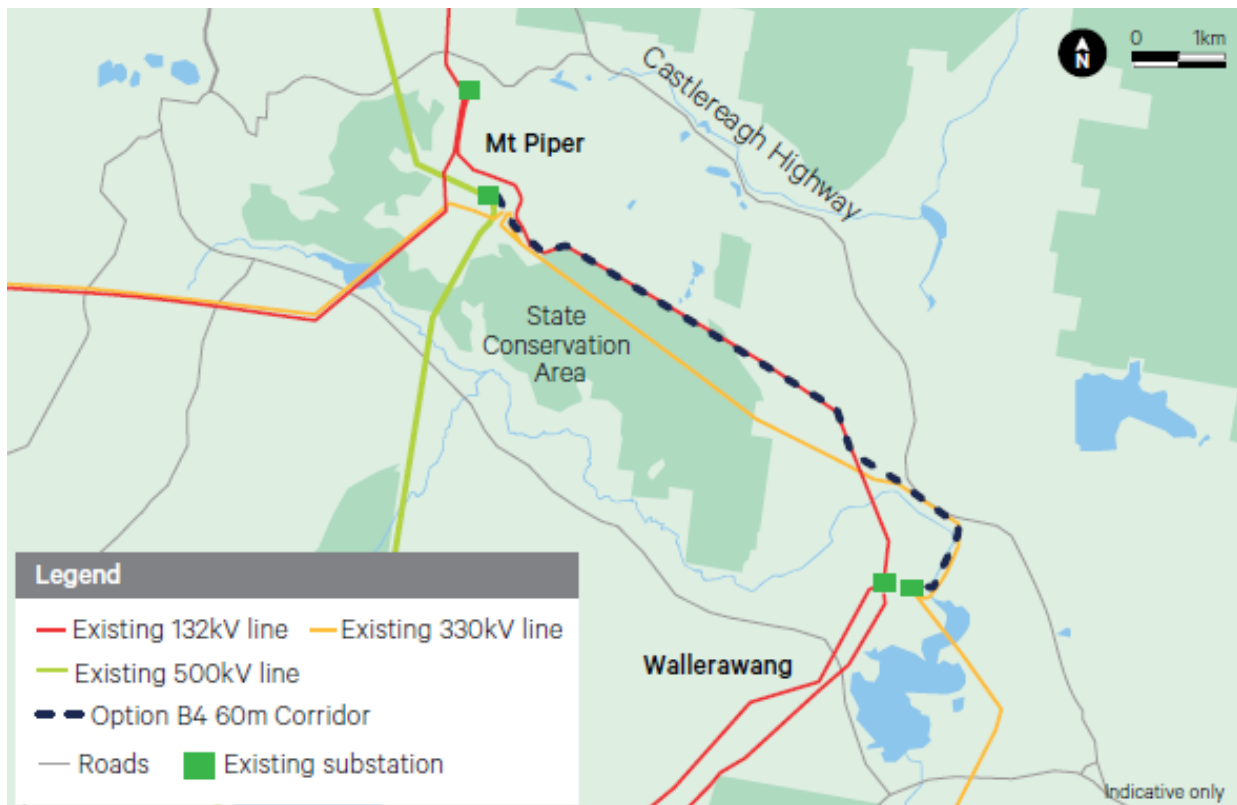


Figure 9. indicative map of Option B-4



Figure 10. Photo of current 45 m easement within Gardens of Stone SCA. Option B-4 proposes to increase the easement by 15 m to the north (left hand side).

Option B-5

Transgrid received stakeholder feedback on proposed Option B-4 and investigated a new Option B-5 (Figure 11) to avoid the Gardens of Stone SCA. It follows a similar route as Option B-4, however, when Option B-5 reaches a section of the Gardens of Stone SCA, it traverses north to avoid this portion of land. This detour moves approximately 100 m closer to a private dwelling and increases the visual impact for this landowner. It requires 32 Ha of vegetation clearing, similar to the flora found within the Gardens of Stone SCA. It also contains sharp bends in the line and crosses above local dam(s) which impacts access and tower structure design.

Centennial Coal stated that this option would impact future land uses and other operational facilities such as their coal conveyor belt that could require outages during maintenance. Transgrid is committed to finding the best possible solution for all landowners and took the decision to reject B-5 due to technical, environmental, landowner and cost constraints.

Therefore, Option B-5 is deemed not feasible and not considered further.

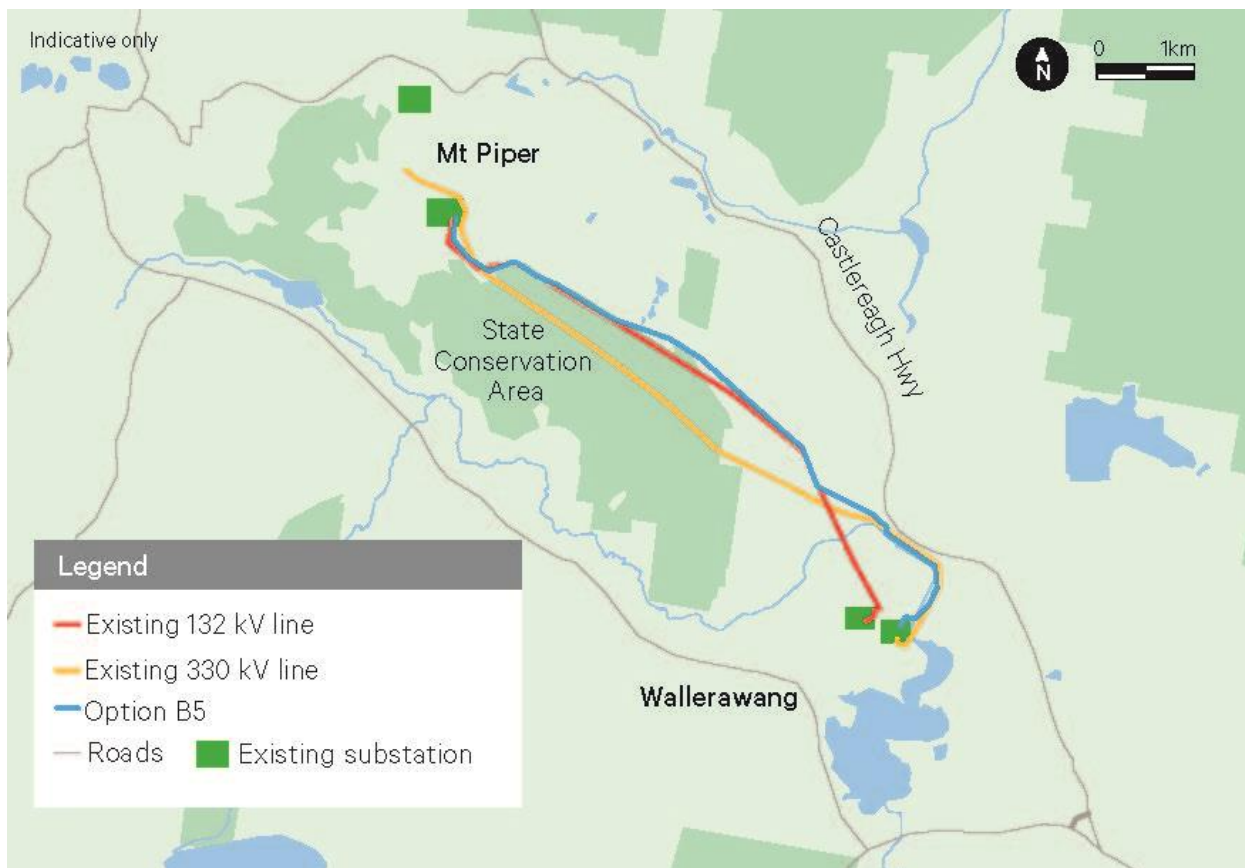


Figure 11. Indicative map of Option B-5.

Option C-1

Option C-1 (Figure 12) exits the Wallerawang substation following the 132 kV Line 94E to the northwest and crosses over Main Street. It follows the existing Line 94E for about 1 km, then travels southwest near the Wallerawang coal loader traversing close to Pipers Flat Road (staying on the northern side of the adjoining rail line) to the existing 500 kV Line 5A7 to Mount Piper substation.

This direct route impacts the entrance of the township of Wallerawang and in particular:

- the St. John the Evangelist Church (State heritage listed church on Main Street)
- the Black and Gold Motel
- private residences

This option would also impact multiple landowners south of the Gardens of Stone SCA as well as require a new 60 m wide easement adjacent to the existing 500 kV transmission line easement through vegetated area owned by Ivanhoe Coal. The combined impact to heritage items, the Wallerawang township and other residential landowners, as well as vegetation clearance, deemed this option as unacceptable.

Therefore, Option C-1 is deemed not feasible and not considered further.

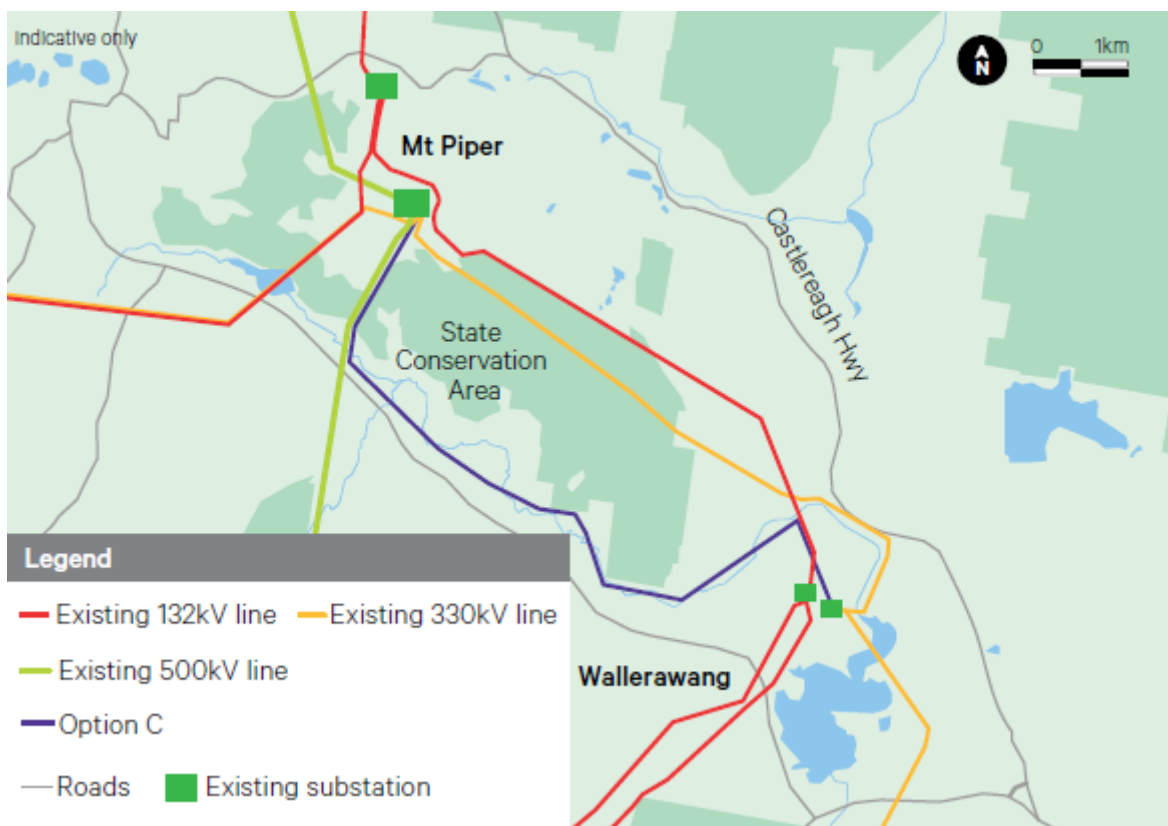


Figure 12. Indicative map of Option C-1

Option C-2

Transgrid received valuable feedback on proposed Option B-2 and potential impacts to the Gardens of Stone SCA. As a result, we investigated other options including Option C-2 (Figure 13). Option C-2 exits north-east of Wallerawang 330 kV substation and runs adjacent to the existing 330 kV Line 70/71 before heading southwest after Main Street. It then heads in a north westerly direction paralleling Pipers Flat Road and be east of the road and railway. This would avoid transmission line over-crossings.

Option C-2 generally avoids the Gardens of Stone SCA (except for a small area of a Lot near Pipers Flat Road) and instead largely traverses rural land. Option C-2 will generally require a new 60 m-wide easement including adjacent to the existing 500 kV transmission line easement through vegetated area.

Transgrid consulted with community, stakeholders and impacted landowners on this option. Consulting the proposed landowners allows Transgrid to make a fully informed decision on the preferred route, having heard from a wide range of stakeholders. There was strong opposition to this route across the different stakeholder groups and would result in severe impacts to project delivery.

Therefore, Option C-2 is deemed unfeasible and not considered further.

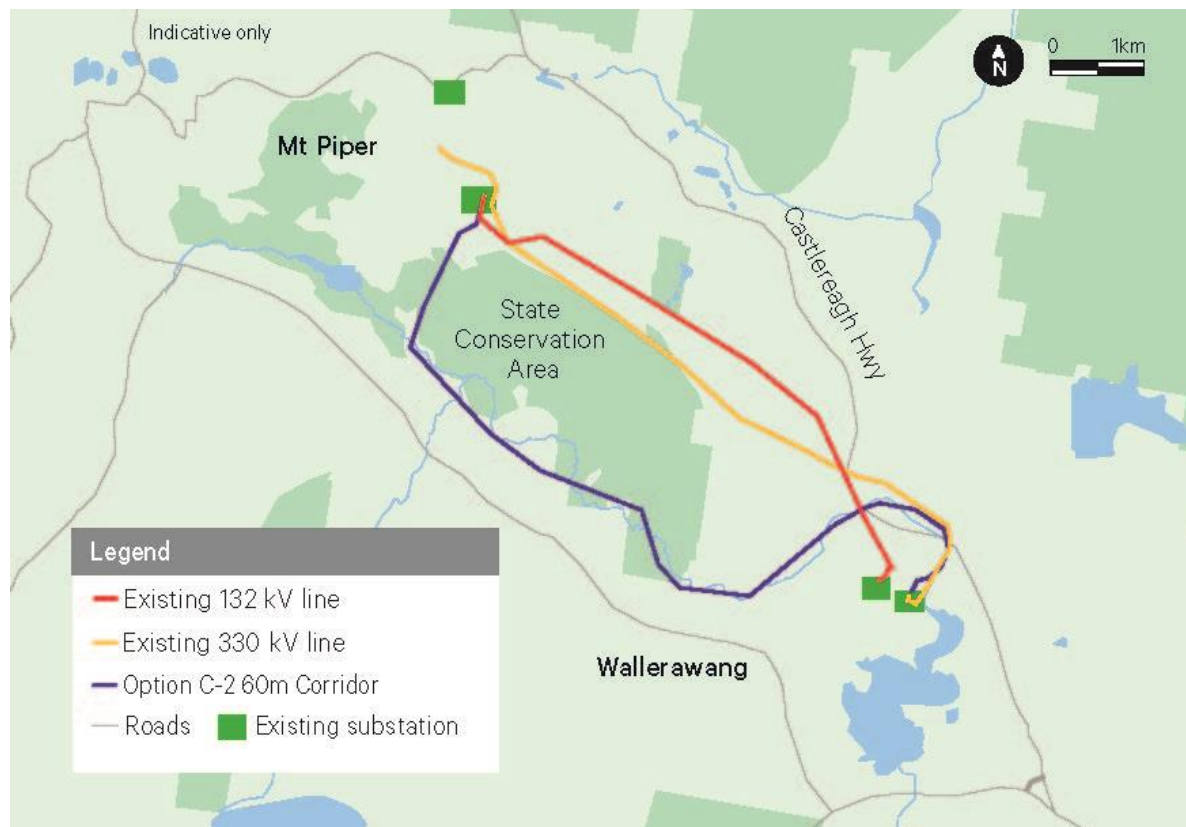


Figure 13. Indicative map of Option C-2.

Options D and E

Transgrid considered undergrounding the line and labelled these two Options D and E. Undergrounding high voltage electricity lines refers to the installation of electrical cables in underground conduits, as opposed to the traditional method of installing overhead power lines supported by poles or towers.

While undergrounding has some advantages, such as reducing the visual impact of power lines, there are a number of factors determining the suitability of undergrounding of transmission lines that need to be considered. These factors include delivery timeframe, cost considerations, social considerations and environmental issues. There are also technical aspects to consider when designing and constructing transmission line infrastructure including voltage levels to be transmitted, the distance of the line being installed and the terrain and environment that is crossed. While underground transmission lines are often chosen to reduce visual impact, their installation can still have environmental impacts.

Options D and E were investigated and found to have:

- Significant cost to consumers. Based on a high-level cost estimate, they were found to be up to four times the cost of overhead construction. The cost of transmission lines is passed onto consumers through their electricity bills and there are strict regulations around the affordability of new infrastructure, and cost is therefore a significant factor in the decision-making process.
- Short asset life expectancy. Most underground cables have a maximum design life of 40 years compared to 80-100 years with overhead lines.
- Construction can cause greater land disturbance. Due to the amount of clearing, trenching, soil and fill disposal, installation and backfilling with slurry.
- Maintenance and repairs are more costly and time consuming. The average time taken to locate and repair an underground fault is approximately 3-6 months and can involve excavation of hundreds of metres of cable.
- Experts in underground cable installation are limited. High voltage underground transmission cable installation is a specialised field and there are a limited number of experts with the necessary qualifications to install and repair the cables.

Therefore, Options D and E are deemed not feasible and are not considered further.

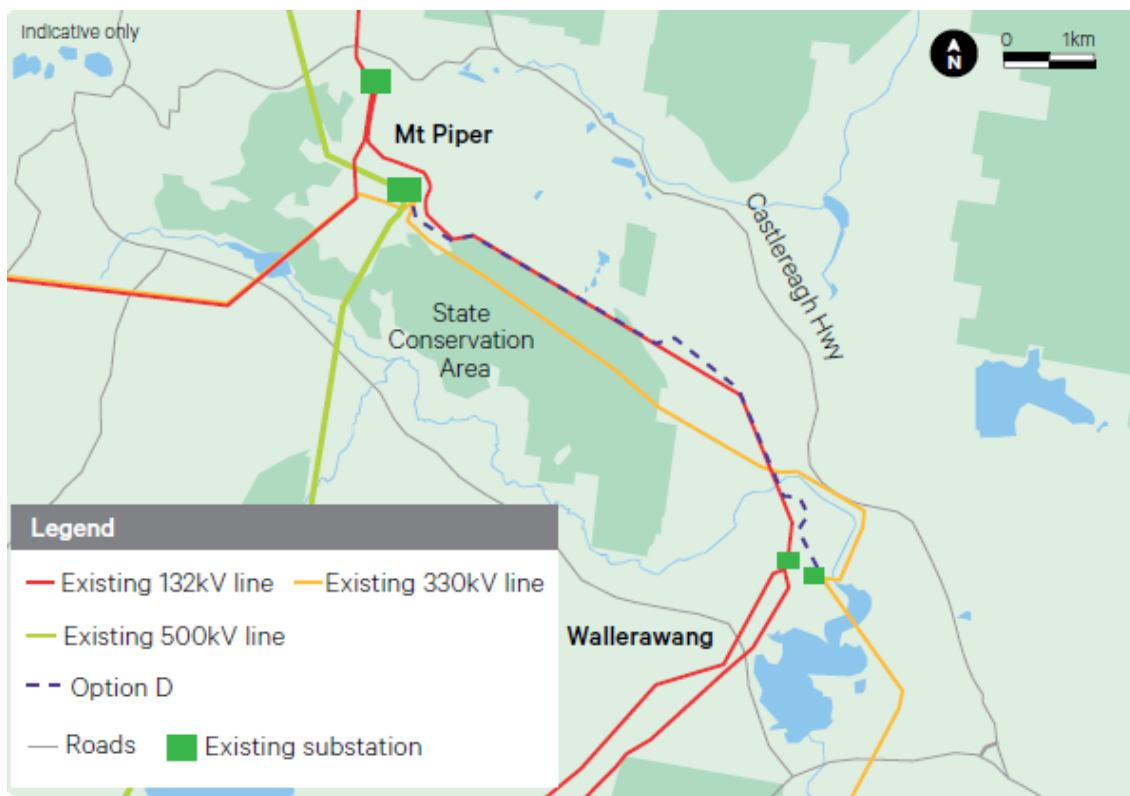


Figure 14. Indicative map of Option D

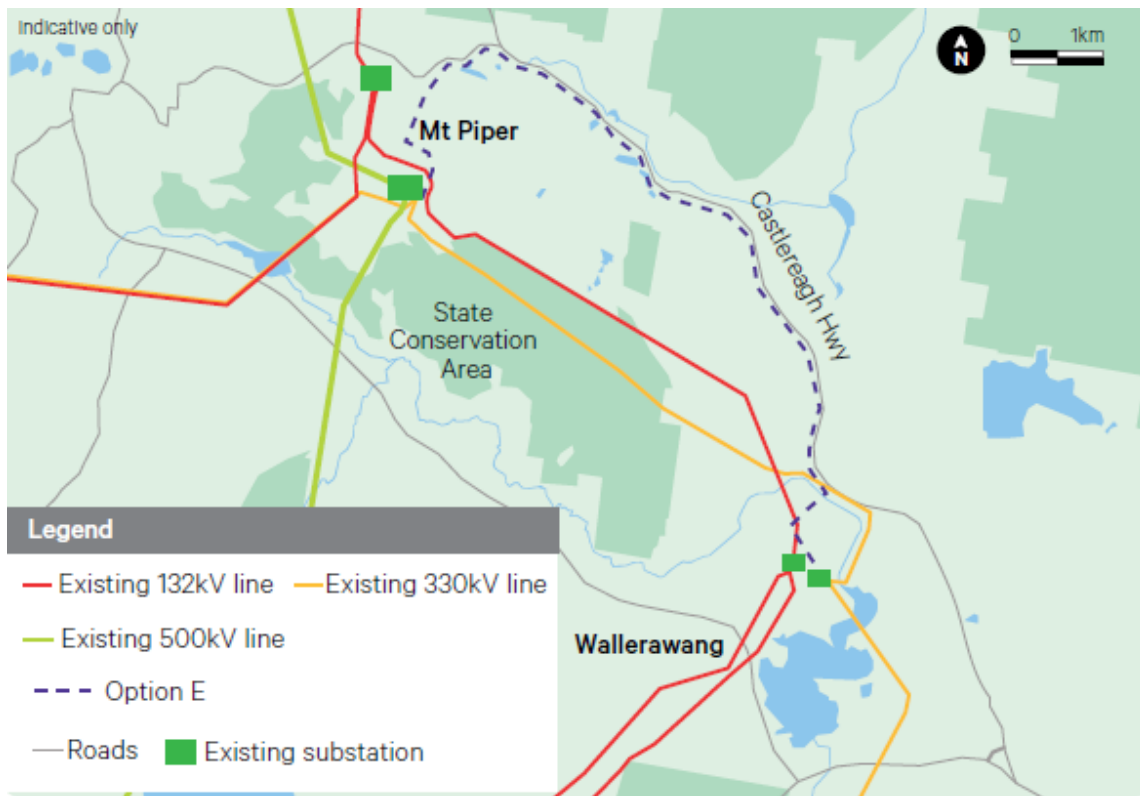


Figure 15. Indicative map of Option E

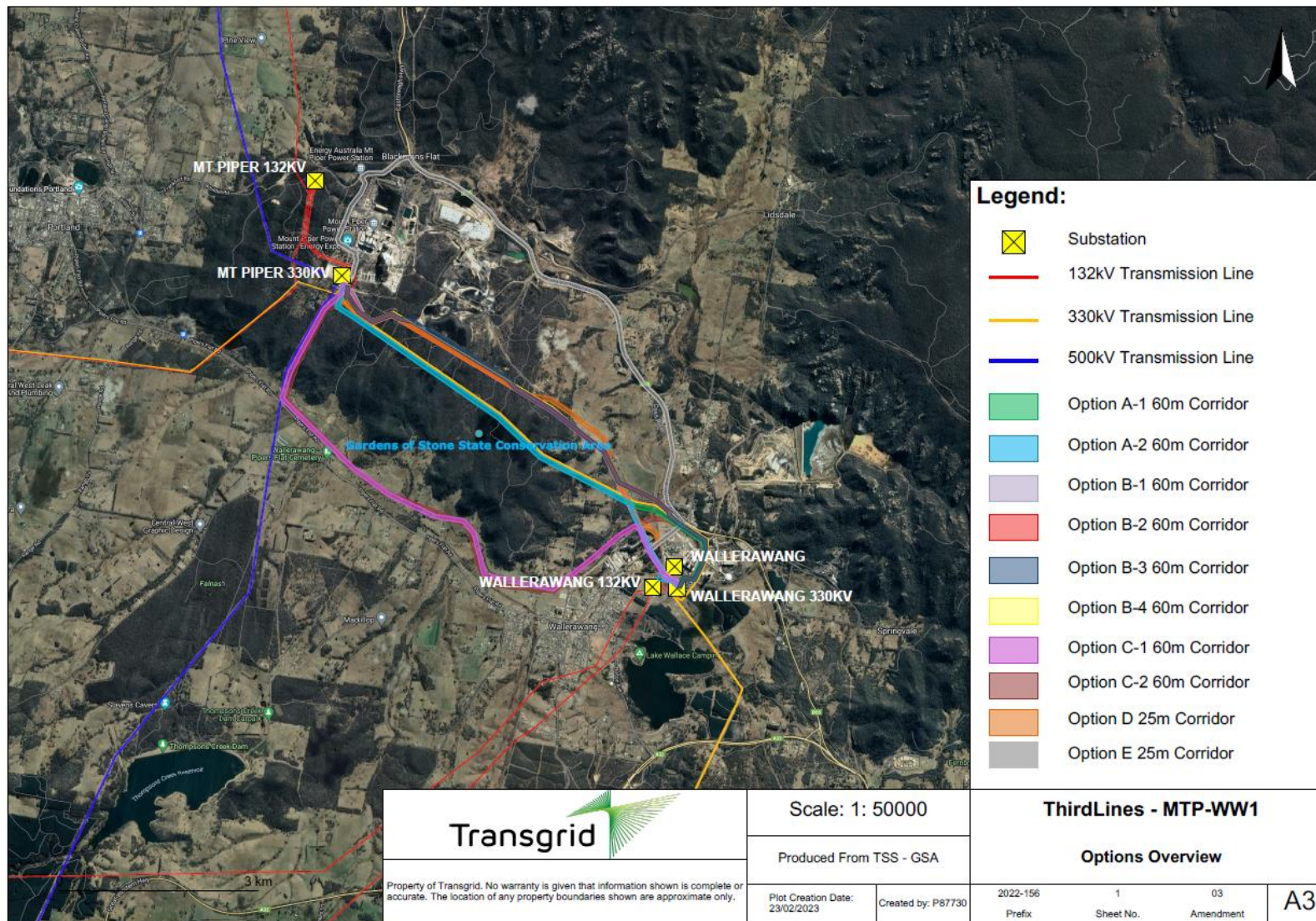


Figure 16. Detailed GIS map of route options

Did Transgrid speak with Traditional Owners?

Early engagement has been conducted with representatives of Wiradjuri, Gundungurra and Darug peoples. Initial feedback indicated there were no immediate objections from the First Nations groups to the route options presented but they expressed their desire to be kept informed throughout the life of the project. Regular ongoing engagement with First Nations groups will continue for future phases of the project.

What feedback did stakeholders provide about the route options?

Transgrid acknowledges the importance of maintaining positive relationships and engaging with the community and stakeholders in a transparent and responsible manner. By actively listening to stakeholders and incorporating their input, Transgrid has demonstrated a commitment to responsible decision-making and a willingness to consider different perspectives. Considering business operations alongside community interests and values is essential for a sustainable and mutually beneficial outcome. Transgrid's commitment to address these concerns indicates a recognition of the importance of supporting local businesses, minimising disruptions to livelihoods and respecting the values and aspirations of the communities affected by the transmission line.

We received feedback from impacted landowners; the National Parks and Wildlife Service (responsible for Gardens of Stone SCA), Centennial Coal (responsible for several impacted land parcels), Greenspot, EnergyAustralia and private residential landowners. All landowners understood the many constraints involved when identifying a suitable route option. National Parks and Wildlife Service (NPWS) indicated a strong preference for minimising impacts to the Gardens of Stone SCA and use Centennial Coal property as much as possible. Transgrid is working closely with Centennial Coal to determine the most appropriate easement alignment that reduces impact to the Gardens of Stone SCA while retaining ongoing operations of the mine.

Lithgow City Council supported Transgrid's in-depth consultation with local community and have requested to see the environmental assessment when this becomes available. Council considered the options presented in 2022 and early 2023 and prefers the alignment that is the least impactful to the local community and residential properties.

Local Member for Bathurst, Paul Toole and Federal Member for Calare, Andrew Gee, have expressed that they are generally in support of Option B-2 and Option B-4 as they utilise the existing easements. Concerns were raised about the impact Option C-2 will have on the local community and landowners.

The residents within 500 m of the easements were notified via a letterbox drop and invited to attend the community session and subscribe for future Project newsletters. To date there have been over 30 subscriptions registered.

During the community information session held on 12 November 2022, the Wallerawang community members who attended expressed that Option B-2 does not significantly affect their property and they support its route (note that Option B-4 was not identified at this point).

The stakeholder and community engagement activities to date have enabled Transgrid to gain a better understanding of local concerns and potential impacts. Ongoing dialogue with local authorities and the community will further inform project decisions and improve the route design. More community engagement particularly with impacted landowners, residents within 500 m, the local Wallerawang community and First Nations groups is planned from early 2024 onwards.

Feedback from the community about the route options

Throughout the consultation, recurring themes and sentiments were recorded and categorised as positive, neutral, or negative. This analysis highlights the concerns, issues, and opportunities that were highlighted to us as very important to those impacted by the proposed new transmission line. A breakdown of these key themes is provided below.

- Impacted landowner livelihoods, business activity and property requirements**

Consultation with impacted stakeholders (including landowners and businesses) was completed. A summary of the themes and sentiment are provided in Table 1. Community sentiment legend

below.

Table legend		
Positive	Neutral	Negative

Table 1. Community sentiment legend

Comments	Related route option
Key stakeholder advised, discussions would need to be had around access, so REA can still be maintained.	B-4
Community member said the Project is a good thing because it's good for transmission and supporting the State Government project	B-2/B-4
Community member has no concerns on where the proposed route is as it won't affect them and there's already powerlines there	B2
Community member said it makes sense to put the transmission line through the National Park as it minimises impacts and is much easier to widen an already existing easement	B2
Key stakeholder advised, there are service utilities in the area as well as drains that they would need to maintain.	B-4
To move the entire 60 m easement to Centennial Coal property will impact the REA and cease their operations	B-3, B-5
Private landowner has no objection to the Project as impacts will be minimal to their land,	B-2/B-4
Private landowner has no objection to the Project but was interested in the visual impacts to their land	B-2/B-4
Concerns about land clearing that would need to be completed. No plans to develop the area	B-2
Concerned that feedback / sentiment from the community may be incorrect as they may only have been looking at Option B-2	B-2
NPWS stated they are not able to approve any development within the Gardens of Stone SCA unless there are no other viable options	B-2, B-4
Key stakeholder asked why the option to traverse through Centennial Coal land was not in the Route Selection Booklet and they would like more information on this option	B-3
NPWS advised that they consider it would be best to hold off on broader community engagement on Option B-4 until there is more certainty in the form of an agreement with Centennial Coal.	B-4
NPWS would like a formal letter issued detailing upcoming environmental, heritage and Geotech works.	B-4
NPWS acknowledged that Option B-4 is an improvement over Option B-2	B-4
NPWS acknowledged that it is not their role to rule out Option C-2, but that they recognise Option C-2 is not an appropriate option to pursue further, in comparison to Option B-4	C-2, B-4

Comments	Related route option
NPWS highlighted that Transgrid need to fully investigate opportunities for the Option B-4 easement	B-4
NPWS reiterated that moving forward they need to see an analysis of all route options and that it's essential that the analysis demonstrates that minimum impact has been applied/considered to the National Park Estate.	B-2, B-3, B-4
Landowner was distressed at the proposal that option C-2 would cut through their private property. They expressed their desire to organise the community together or do anything possible, against building the transmission line via this route. They indicated their route preference is the 'A or B' route that runs in a straight line and does not disturb private land.	C-2
Environmental groups highlighted the significance of the Gardens of Stone State Conservation Area and not disturbing it. Stated there is an immense amount of Aboriginal history, caves, artefacts that need to be considered in the SCA. Stated there is a creek near to the proposed easement that has a lot of different flora and fauna.	B-2
Environmental groups highlighted that transmission line should be pushed onto coal mining land to avoid the State Conservation Area completely	B-2, B-4,

Table 2. Feedback relating to landowner livelihoods, business activity and property requirements

- Environmental disturbance in the Gardens of Stone State Conservation Area**

NPWS and local First Nations community groups raised concerns relating to clearing of vegetation relating to construction of the new transmission line in the Gardens of Stone SCA. Transgrid has taken this feedback into account by identifying a proposed route which is located adjacent to an existing, operational coal mine with existing disturbed vegetation. Transgrid will avoid and minimise vegetation removal as much as possible with mitigation measures being implemented during construction and operation.

Transgrid invited local representatives from Wilderness Australia and Lithgow Environmental Group to view the current easement on 94E and feedback on the proposed route option B-4. They expressed their satisfaction that the proposed option would utilise the existing cleared easement and the new 60 m easement would be shared equally with Centennial Coal. The representatives urged Transgrid to be mindful of vegetation clearing and prefers an option with little or no clearing. There was agreement that they are unsupportive of Option A that traverses through the middle of Gardens of Stone SCA.

- First Nations cultural values and traditional ecological knowledge**

Recognising and respecting First Nations cultural values is vital in ensuring a more inclusive and sustainable approach to transmission line development. Representatives from Traditional Owners within the project area visited the existing 45 m easement and highlighted to Transgrid the importance of heritage surveys in the environmental assessment process.

Table legend		
Positive	Neutral	Negative

Table 3 Community sentiment legend

Comments	Related route option
NPWS flagged the importance of Indigenous heritage assessment to include all three First Nations groups that have been engaged with (Bathurst Local Aboriginal Land Council, Mingann Wiradjuri Aboriginal Corporation and Warrabinga).	All
NPWS flagged the importance of indigenous sites and would like to be kept informed about what sites could potentially be impacted as Transgrid refines the route option	All
First Nations representatives expressed concerns over Indigenous sites that may be impacted	All

Table 4. Feedback relating to First Nations cultural values and practices and traditional ecological knowledge.

- **Local community concerns, issues and land uses to inform the route selection options**

Community and stakeholder feedback contributes to the improvement of transmission line projects by providing insights and suggestions for better design, routing options and infrastructure placement. Stakeholders such as Council highlighted the importance of engaging meaningfully with community on all route options.

Table legend		
Positive	Neutral	Negative

Table 5 Community sentiment legend.

Comments	Related route option
At the Information Session, community members stated that as the project does not affect their property, they were accepting of it.	A-1
Declaration of the park land becoming a State Conservation Area recently was a high profile process and there would be huge backlash from environmental groups about the Project	B-2 ,B-4
Council stated they do not wish to take a position on the matter until they are reassured as to the environmental impact on the Gardens of Stone SCA with respect to the most direct alignment option.	B-4
NPWS would also like to see part of the current easement re-vegetated if Transgrid no longer require the land once the new easement is established	B-2, B-4
Stakeholder expressed concern if a transmission line was to come directly through their property that their business would be impacted significantly.	C1

Table 6. Feedback relating to community concerns, issues and land uses to inform the route selection options

- **Stakeholder sentiment towards transmission lines and easement requirements**

- Feedback towards the transmission lines and easement requirements can provide community sentiments towards the Project easement and potentially valuable information relating to the easements prior to progressing to the next phase of the Project. Table 7. Community sentiment legend.
- below summarises community sentiment towards transmission lines and easement requirements.

Table legend		
Positive	Neutral	Negative

Table 7. Community sentiment legend.

Comments	Related route option
It still stands that the most direct route that minimises impact on residential properties might be most logical. However, the Council will need some further information regarding environmental impact before formally endorsing this option	C-2
Community member contacted Transgrid via email asking why the transmission line is going through a National Park	B-2, B-4
Community member highlighted that it makes sense to put the transmission line in the proposed location as there is already an easement there and it minimises impacts by using part of the existing easement	B-2
Community member highlighted their approval based off the idea that the transmission line would primarily avoid private landowner property	B-2

Table 8. Feedback relating to sentiment towards transmission lines and easement requirements.

4. The preferred route

Transgrid listened to feedback from community and stakeholders in identifying and assessing routes for this project and are grateful for feedback provided. Following Transgrid's route selection process, community input and assessment of route options, the preferred route selected is Option B-4 (Figure 17). The selected route minimises visual impact for community and the local township and balances landowner preferences and various constraints including engineering, constructability, environmental impacts and cost, to ensure that the outcome is prudent and efficient. More detail is provided below.

Why was this route selected?

Key aspects of why Option B-4 was selected as the preferred route are summarised below.

Minimised impacts to private residential landowners

Eight individual parties are directly impacted by the proposed easement. Of these eight parties, two of them are private residents whose land equates to 0.44% or 1,107m² of the proposed easement.

Since Option B-4 exits Wallerawang substation to the northeast and parallels the existing 330 kV Line 70/71, impacts in the township (notably the Black and Gold Motel) and heritage item (St John the Evangelist Church) are reduced.

Transgrid are committed to further consultation with relevant stakeholders to discuss concerns and further refine the design.

Impacts to key landowners

Due to ongoing consultation with key stakeholders, the easements proposed for Option B-4 continue to be under consideration. In accordance with the stated desired outcomes expressed by the National Parks and Wildlife Service, the easement will, wherever possible, be minimised in the Gardens of Stone SCA. As consultation between stakeholders and further environmental assessments are completed for Option B-4, the route will continue to be narrowed as more stakeholder and environmental constraints are identified.

Co-locating with existing easements in the State Conservation Area

An objective of the project is to use the existing easements to reduce impacts.

Existing easements traverse through the Gardens of Stone SCA, which is managed under the Gardens of Stone State Conservation Area Plan of Management (November 2022). This is a legal document which outlines strategic, ongoing management objectives for the park. Section 5 of the Plan of Management states that the following is an authorised activity within the Gardens of Stone SCA, quoted in the call out box:

Approximately 37% of the preferred route assessment area passes through the Gardens of Stone SCA.

The preferred route minimises vegetation clearing within the SCA. Based on a review of mapped vegetation, reusing the existing easement results in the least area of potential native vegetation (comprising of grassy woodlands and dry sclerophyll forests) estimated to be cleared. Further detailed ecology assessments will be required to confirm the quality of the vegetation.

Listening to Traditional Owners

First Nations representatives understood the project need and did not oppose Option B-4.

There will be continuous engagement with the indigenous groups in the area to identify any potential constraints that are unknown.

“The grant of relevant authorisations for utility infrastructure (including but not limited to) pipelines, telecommunications infrastructure and access purposes may be considered on a case-by-case basis in accordance with the NPW Act”

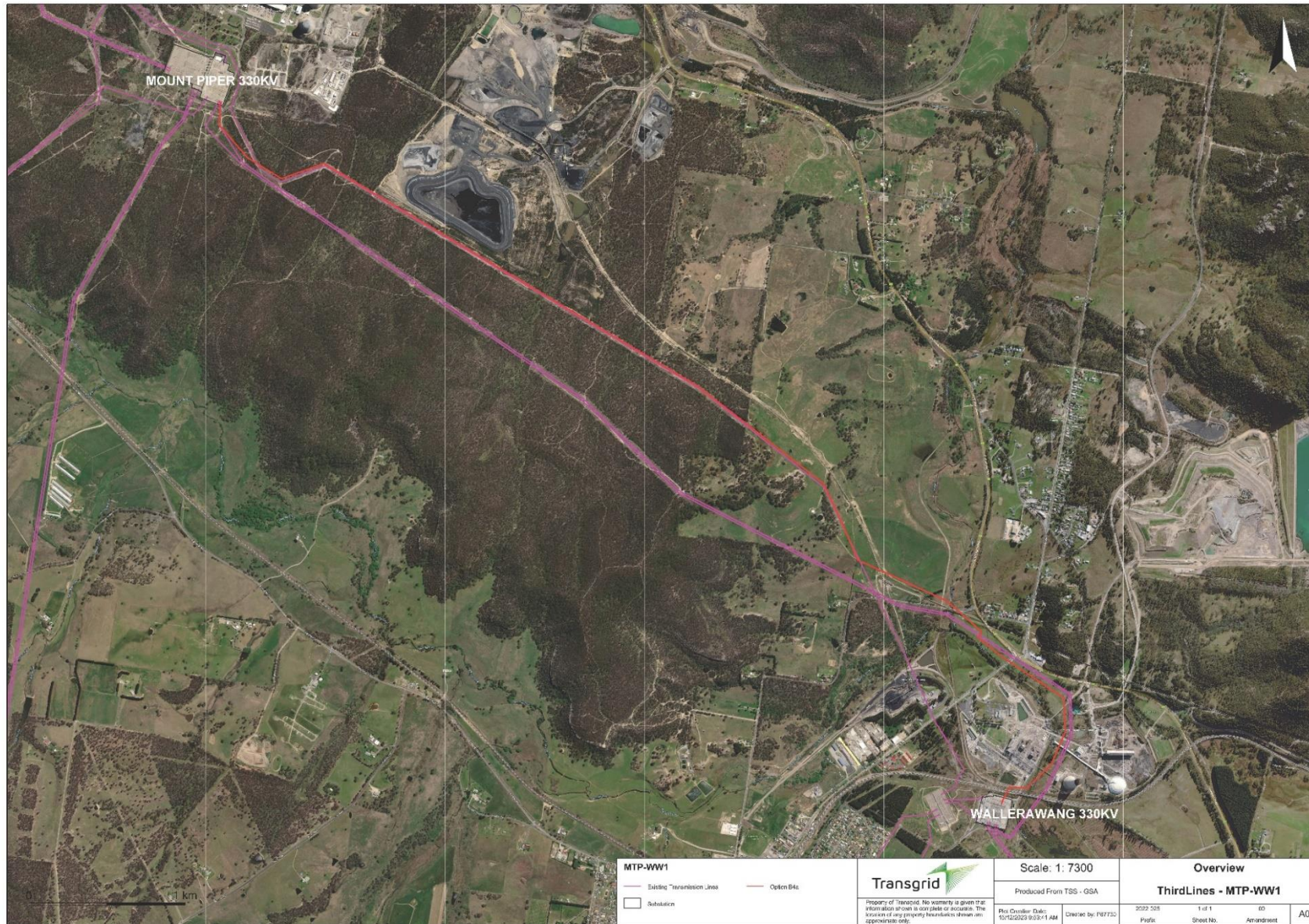


Figure 17. Map of preferred route option B4

5. Next Steps

Transgrid has now identified a preferred route (B-4). This recommended route option will be placed on public display in early 2024 to give the community and stakeholders an opportunity to review the recommended route and provide feedback. Using the landowner feedback, detailed field studies and engineering concept designs, the project team will further refine the route as far as practicable during preparation of the detailed environmental assessment.

What is the process for getting this project approved?

The Mount Piper to Wallerawang Transmission Line Upgrade Project will follow a comprehensive environmental assessment process. We are at the start of the process and are currently drafting a Scoping Report for the Department of Planning and Environment that will be formally submitted in early 2024. The timeline below outlines the entire process, with community and stakeholder feedback, a vital part of the decision-making process.

Environmental Planning Approvals Pathway

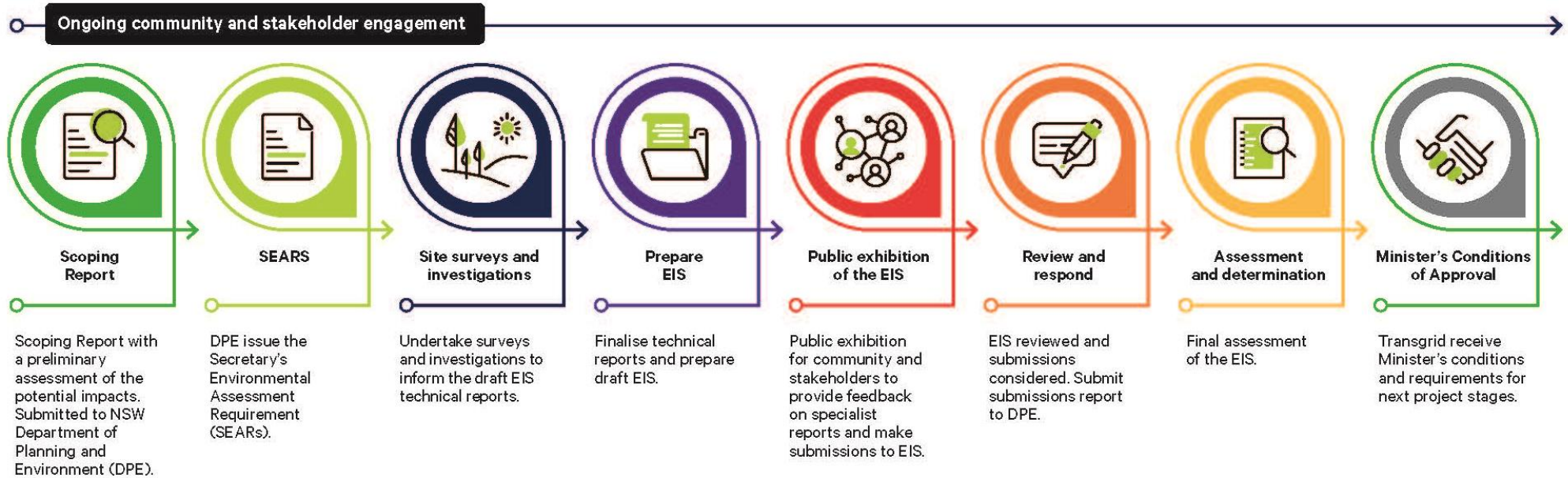


Figure 18. Project approval pathway.

What is included in the Environmental Assessment?

To ensure that Transgrid can identify all potential constraints and impacts of the project, the assessment area is larger than the transmission line easement. This larger area captures all the different factors that might need to be considered within the detailed design of the project and would include an assessment of environmental considerations such as heritage, biodiversity, water catchments, land use, air quality, noise, traffic and transport, visual amenity and much more. This area will be used for the environmental assessment called the Environmental Impact Statement (EIS), which will be submitted to the Department of Planning and Environment. This detailed review of the environmental constraints will help refine the design and identify measures to further reduce the project's impact.

Social Impact Assessment

Community and stakeholder engagement in 2024 will inform a broader Social Impact Assessment, which is a requirement for projects of this scale. The Social Impact Assessment will look at potential areas of concern raised, such as impacts to local community facilities, along with less tangible impacts to community cohesion that can accompany large scale developments and the changes to local economic conditions they can bring.

This would include issues such as:

- How the local labour and supply markets respond to opportunities created by the project and what this means for existing industries
- How the local housing and accommodation supply responds to an influx of labour and how accommodation camps can be used to offset adverse impacts
- How to prepare local communities to participate in major project opportunities in a sustainable way
- How to provide enduring community benefits through skills development, education and training, and investment opportunities.

How can I provide my feedback?

We welcome community and stakeholder feedback throughout the life of the project. Your feedback is important to us and essential for us to understand project impacts at any point.

You can get in touch with us by emailing the project team at community@transgrid.com.au or on 1800 222 537 (free call).

Appendix – Summary of meetings

Summary of engagement for Option A-1 and Option A-2

Stakeholder	Date of Engagement	Summary of Engagement
Lithgow City Council (LCC)	Apr 2022	Provide project overview, route selection methodology and summary of potential route options. Transgrid met with the General Manager of LCC as well as the Director of Infrastructure Services of the Council to walk them through the Project and proposed route options.
Greenspot	July 2022	Provide project overview, route selection methodology and summary of potential route options.
All residents within 500m buffer of project area	Aug 2022	Provide project overview, route selection methodology and considered options All residents within a 500 m buffer of Project area received a project introduction letter and project fact sheet.
Lithgow City Council	Aug 2022	Council was updated on the status of the Project and included providing examples of letters to residents (within 500 m of the Project) as well as the location and level of information available on the Transgrid website.
Greenspot	Aug 2022	Greenspot were updated on the status of the Project and included providing examples of letters to residents (within 500 m of the Project) as well as the location and level of information available on the Transgrid website.
NPWS	Aug 2022	NPWS were updated on the status of the Project and included providing examples of letters to residents (within 500 m of the Project) as well as the location and level of information available on the Transgrid website.
Centennial Coal	Aug 2022	Centennial Coal were updated on the status of the Project and included providing examples of letters to residents (within 500 m of the Project) as well as the location and level of information available on the Transgrid website.
EnergyAustralia	Aug 2022	Formal letter issued to EnergyAustralia in relation to the Project and in response to queries they had from initial meeting. EnergyAustralia were updated on the status of the Project and included providing examples of letters to residents (within 500 m of the Project) and the location and level of information available on the Transgrid website.
All residents within 500 m buffer of project area	Oct 2022	All residents within 500 m buffer received a project update letter which advised them that Transgrid have proposed route options and notified of the upcoming information session.
Wallerawang Community	Nov 2022	Community Information Session Resources available on the day: <ul style="list-style-type: none"> Route Selection Booklet, which outlines the initial route options that were considered viable originally Proposed Route Fact Sheet The sentiment was positive on the day with the majority of community members stating that as the Project does not affect their property, they were accepting of it. A representative from Lithgow Environment Group was in attendance who was keen to understand exactly where the line is proposing to go. This was demonstrated on the large maps made available.

Summary of engagement for Option B-2, Option B-3 and Option B-4

Stakeholder	Date of Engagement	Summary of Engagement
NPWS	Jun 2022	<p>Provided Project overview, route selection methodology and summary of potential route options.</p> <p>Option A-1 and A-2, D and E were deemed unacceptable for the adverse environmental and community impacts.</p>
NPWS	Nov 2022	<p>Explanation of route selection process and how this process has identified a proposed route Option B-2.</p> <p>NPWS was concerned that feedback / sentiment from the community may be incorrect as they may only have been looking at Option B-2.</p> <p>NPWS requested further route options be considered to reduce impact of 15m easement solely on NPWS land identified by the proposed route of Option B-2.</p>
Centennial Coal	Feb 2023	<p>Following meeting with NPWS, Transgrid developed Options B-3 and B-4 as follows:</p> <p>Option B-3 houses the entire 60 m easement on Centennial Coal land within the central part of the SCA (adjacent to the REA).</p> <p>Option B-4 splits the easement 7.5m each side with NPWS and Centennial Coal</p> <p>At this meeting Centennial Coal opposed Option B-3 as it would render their site inoperable. Centennial Coal were open to further explore Option B-4 as a favourable option.</p>
NPWS	Mar 2023	<p>Transgrid Project team met with NPWS to discuss Options B-4 and C-2 following completion of the route options report.</p> <p>NPWS agreed to consider further site investigations (environmental survey/geotech) to develop Option B-4.</p> <p>NPWS acknowledged Option C-2 would not be acceptable to local community.</p> <p>Transgrid to complete CSE due diligence and complete engagement with Option C-2 property owners.</p> <p>To progress Option B-4 with NPWS, it was requested that new transmission line easement should be allocated to Centennial Coal property as much as possible to limit impact to NPWS land.</p>
Centennial Coal	Mar 2023	<p>Transgrid continued conversations with Centennial Coal to further understand operational impacts and technical limitations associated with Option B-4. Centennial Coal agree to provide documentation relating to future operational plans and further site investigations relating to B-4 option.</p>
NPWS	Apr 2023	<p>Transgrid and NPWS complete site visit to discuss B-4 route and potential easement design.</p> <p>NPWS agreed to consider permit entry for site investigations (mainly geotechnical) and environmental surveys. Transgrid to continue conversations with Centennial Coal to progress Option B-4 and provide update NPWS</p>
Centennial Coal	Apr 2023	<p>Transgrid Project team meet with Centennial Coal to discuss Option B-4 following completion of the route options report.</p> <p>Centennial Coal agreed to further site investigations (environmental survey/geotech) to determine feasibility of allocating larger portion of Option B-4 easement on their site.</p> <p>Centennial Coal cannot agree to easement allocation/ route design that will significantly impact their operations.</p> <p>Transgrid to schedule further meetings with Centennial Coal to discuss easement options following site investigations and pegging activities.</p>
Lithgow City Council	May 2023	<p>Transgrid provided Council Project update and overview of route options development report. Two feasible options remain: Options C-2 and B-4.</p> <p>Council were concerned Option C-2 will have significant impact to the local community. Council most supportive of Option B-4 and would provide letter of support</p>
Paul Toole	May 2023	<p>Transgrid Government Relations team provided Project update and overview of route options development report. Two feasible options remain: Options C-2 and B-4.</p>

Stakeholder	Date of Engagement	Summary of Engagement
(NSW State Government member for Bathurst)		Mr Toole raised concerns pertaining to impacts associated with Option C-2 was too significant to the community and expressed strong support for Option B-4. Mr Toole also advised Transgrid to reach out to impacted the five landowners to ensure that they were aware of Option C-2 and Transgrid's pursuance of Option B-4 as the preferred route.
NPWS	Jun 2023	Transgrid met with NPWS 1 June 2023 (site visit). Transgrid provided the Route Options Development Report to NPWS and asked if they had any feedback / questions. NPWS requested a clearer PDF map of the option along the boundary (Option B-4). NPWS requested an update on any agreement with Centennial Coal and could not consider the feasibility of Option B-4 without this agreement in place. Transgrid advised an in-principle agreement with Centennial Coal was planned, however they have been supportive to determine a feasible easement on their property that will not impede on their operations.
Centennial Coal	Jun 2023	Transgrid and Centennial Coal discussed marking out of investigation locations for the geotechnical works and easement feasibility during a site visit. The Centennial Coal Operations Manager confirmed no impacts have been identified. Further discussion to progress memorandum of understanding and signatory in principle approvals.
Andrew Gee (Federal Member for Calare)	Sept 2023	Transgrid met with Mr Gee and discussed the options, including B-4. The main issues raised were that transmission towers and lines were increasingly troublesome for landowners across NSW and this should be considered for the Project. Mr Gee was satisfied about the option review process.

Summary of engagement with First Nations groups

Stakeholder	Date of Engagement	Attendees	Summary of Engagement
Warrabinga	May 2023	3 x Transgrid representatives 4 x Warrabinga representatives	Meeting was conducted over Teams and Transgrid gave an overview of the Project and summary of the preferred routes. The Warrabinga members were very interested in the cultural heritage studies and to be involved where they can. A site visit discussed and will be organised in the future.
Bathurst Local Aboriginal Land Council (BLALC)	May 2023	2 x Transgrid representatives 1 x representative from Bathurst LALC	This meeting was a chance to introduce the Transgrid community and engagement team and discuss the Project with the BLALC . The route selection booklet was distributed and discussed with BLALC. The BLALC representative said they would discuss the Project with their staff and email Transgrid any sensitivities or issues of note. The question was asked whether other Aboriginal organisations in the area that work with cultural heritage, and the BLALC representative mentioned that Mingaan corporation in Lithgow were in the area. BLALC are keen to be involved in the Project were ever they can and ask to be informed with up-to-date information.
Mingaan Wiradjuri Aboriginal Corporation	May 2023	2 x Transgrid representatives 1 x representative from Mingaan Wiradjuri Aboriginal Corporation	The meeting was held with a member of MWAC. The meeting was about the Project and route selection. The member will discuss with their team and provide comments about the Project. Further meetings with other members are to be scheduled.

Summary of engagement for Option C-2

Stakeholder	Date of Engagement	Summary of Engagement
Lithgow Local Council	May 2023	Transgrid provided Council with a Project update and overview of route options development report and presented further information on Options C-2 and B-4. Council concerned that Option C-2 will have significant impact to the local community.
Paul Toole (NSW State Government member for Bathurst)	May 2023	Transgrid Government Relations and Stakeholder engagement team provided a Project overview and presented Options C-2 and B-4. Mr Toole raised concerns pertaining to impacts associated with Option C-2 was too significant to the community and expressed strong support for Option B-4. Mr Toole also advised Transgrid to reach out to impacted the five landowners to ensure that they were aware of Option C-2 and Transgrid's pursuance of Option B4 as the proposed route.
Andrew Gee (Federal Member for Calare)	Sept 2023	Transgrid met with Mr Gee and discussed the options, including C-2. The main issues raised were that transmission towers and lines were increasingly troublesome for landowners across NSW and this should be considered for the Project. Mr Gee was satisfied about the option review process.
Landowner 1*	Oct 2023	Multiple attempts were made to collect feedback from this landowner; however, the team received no response. Sentiment: None
Landowner 2*	Oct 2023	Landowner 2 noted that while he understands the need for the project, he would like more information on exactly where on his property the transmission line would traverse. While the property is currently used for business purposes as a site for a storage facility. Landowner 2 intends to build a home towards the front of the property in the near future for members of his family to live on. Landowner 2 acknowledged that he would not want the project getting in the way of his plans for the land. Sentiment: Negative
Landowner 3*	Oct 2023	Landowner 3's grandson who resides on the property expressed deep concern if option C-2 were to go ahead. The family grow oats on the farm and run cattle and highlighted that there is no need to go through their property at all when there's already an option that makes sense and has existing infrastructure on it. The landowner expressed concern that they would have difficult subdividing their property for their children in years to come and noted that they already have powerlines on their land. He also noted that this option would upset the community and decrease a number of residents property value. Sentiment: Negative
Landowner 4*	Oct 2023	Landowner 4 expressed neutral sentiment towards C-2 transmission line entering their property. Sentiment: Neutral
Landowner 5*	Oct 2023	Landowner 5 was distressed at the proposal that option C-2 would cut through their private property. They expressed their desire to organise the community together or do anything possible, against building the transmission line via this route. They indicated their route preference is the 'A or B' route that runs in a straight line and does not disturb private land. Sentiment: Negative

*landowners' personal information is protected

Summary of engagement for Option D and Option E

Stakeholder	Date of Engagement	Summary of Engagement
All residents within 500m buffer of project area	Oct .2022	All residents within 500m buffer received a Project update letter and the proposed route option fact sheet which advised them that Transgrid had determined a proposed route option and notified of the upcoming information session.
Wallerawang Community	Nov.2022	Community Information Session, Transgrid consulted with approximately 11 people at the session and discussed general considerations for the Project options.
Greenspot	Nov 2022	Greenspot were issued with the Mount Piper to Wallerawang Transmission Network Project Route Selection Booklet for information which included Options D and E.
NPWS	Nov 2022	NPWS were issued with the Mount Piper to Wallerawang Transmission Network Project Route Selection Booklet for information which included Options D and E.
Lithgow Conservation Society	Nov 2022	Lithgow Conservation Society was issued with the Mount Piper to Wallerawang Transmission Network Project Route Selection Booklet for information which included Options D and E.

Feedback relating to landowner livelihoods, business activity and property requirements

Sentiment	Comments	Related route option
Positive	Key stakeholder advised, discussions would need to be had around access, so REA can still be maintained.	B-4
Positive	Community member said the Project is a good thing because it's good for transmission and supporting the State Government project	B-2/B-4
Neutral	Community member has no concerns on where the proposed route is as it won't affect them and there's already powerlines there	B2
Neutral	Community member said it makes sense to put the transmission line through the National Park as it minimises impacts and is much easier to widen an already existing easement	B2
Neutral	Key stakeholder advised, there are service utilities in the area as well as drains that they would need to maintain.	B-4
Negative	To move the entire 60 m easement to Centennial Coal property will impact the REA and cease their operations	B-3
Neutral	Private landowner has no objection to the Project as impacts will be minimal to their land,	B-2/B-4
Neutral	Private landowner has no objection to the Project but was interested in the visual impacts to their land	B-2/B-4
Neutral	Concerns about land clearing that would need to be completed. No plans to develop the area	B-2
Negative	Concerned that feedback / sentiment from the community may be incorrect as they may only have been looking at Option B-2	B-2
Neutral	NPWS stated they are not able to approve any development within the Gardens of Stone SCA unless there are no other viable options	B-2, B-4
Neutral	Key stakeholder asked why the option to traverse through Centennial Coal land was not in the Route Selection Booklet and they would like more information on this option	B-3
Negative	NPWS advised that they consider it would be best to hold off on broader community engagement on Option B-4 until there is more certainty in the form of an agreement with Centennial Coal.	B-4

Sentiment	Comments	Related route option
Neutral	NPWS would like a formal letter issued detailing upcoming environmental, heritage and Geotech works.	B-4
Positive	NPWS acknowledged that Option B-4 is an improvement over Option B-2	B-4
Neutral	NPWS acknowledged that it is not their role to rule out Option C-2, but that they recognise Option C-2 is not an appropriate option to pursue further, in comparison to Option B-4	C-2, B-4
Neutral	NPWS highlighted that Transgrid need to fully investigate opportunities for the Option B-4 easement	B-4
Neutral	NPWS reiterated that moving forward they need to see an analysis of all route options and that it's essential that the analysis demonstrates that minimum impact has been applied/considered to the National Park Estate.	B-2, B-3, B-4
Negative	Environmental groups highlighted the significance of the Gardens of Stone State Conservation Area and not disturbing it. Stated there is an immense amount of Aboriginal history, caves, artefacts that need to be considered in the SCA. Stated there is a creek near to the proposed easement that has a lot of different flora and fauna.	B-2

Feedback relating to community concerns, issues and land uses to inform the route selection options

Sentiment	Comments	Related route option
Neutral	Declaration of the park land becoming a State Conservation Area recently was a high profile process and there would be huge backlash from environmental groups about the Project	B-2, B-4
Neutral	Council stated they do not wish to take a position on the matter until they are reassured as to the environmental impact on the Gardens of Stone SCA with respect to the most direct alignment option. Council have previously shown their support of Option B-2	B-4
Neutral	NPWS would also like to see part of the current easement re-vegetated if Transgrid no longer require the land once the new easement is established	B-2, B-4
Neutral	NPWS is requesting for a more detailed map of the assessment coverage	B-2, B-4