

Employee Benefits

Unlock
your
benefits

Flexibility

Embrace work-life harmony with flexible options, empowering you to tailor your work to suit your lifestyle

Families

Our comprehensive benefits cater to your family's needs and provide a supportive environment for a thriving work-life balance

Wellbeing & lifestyle

Prioritise your health and personal growth with wellness initiatives

Discounts & financial benefits

Enjoy exclusive discounts and perks that enhance your daily life

Development & recognition

Enhance your skills to meet your career development and goals





Flexibility

Embrace work-life harmony with flexible schedules and remote options; empowering you to tailor your work to suit your life's demands.

Hybrid working and the opportunity to work flexibly

Flexible Working Arrangement

Nine-day fortnight (Applied to employees covered by the Enterprise Agreement)

Flexible public holidays procedure that gives you the opportunity to swap a selected public holiday for another day within the same calendar year

Personal leave for various personal matters such as moving house, providing family care or NAIDOC celebrations

Annual paid picnic day (Applied to people covered by the Enterprise Agreement)





Families

Our comprehensive benefits cater to your family's needs, ensuring their well-being and providing a supportive environment for a thriving work-life balance.

Next Steps

coaching program for those taking parental leave

20 weeks of gender-neutral paid primary carer parental leave (or 40 weeks at half pay) and two weeks of paid secondary carers leave

Superannuation

payments for periods of unpaid parental leave (primary carer only)

Subsidised

vacation care for school aged children

Access to Welfare Fund

that provides support to members and their families in times of distress and hardship





Wellbeing & lifestyle

Prioritise your health and personal growth with wellness initiatives, fostering a positive lifestyle that enhances your overall well-being.

Sick leave that can be used for many different circumstances, including mental health reasons, managing chronic illness, disability, or reproductive health

Emergency/
crisis leave

Leave for gender
affirmation

15 days of domestic and
family violence leave

Blood/bone marrow
donors leave and
community leave

Employee Assistance Program –
a free confidential counselling
service for our people and their
immediate families

Flu shots and health
and skin checks

WorkMates peer support
program – network of people
trained to support colleagues
who are struggling with
mental health concerns





Discounts & financial benefits

Enjoy exclusive discounts and perks that enhance your daily life, from shopping to entertainment, making every day a little brighter.

15.5% super (Applied to employees covered by the Enterprise Agreement)

Weekly payroll

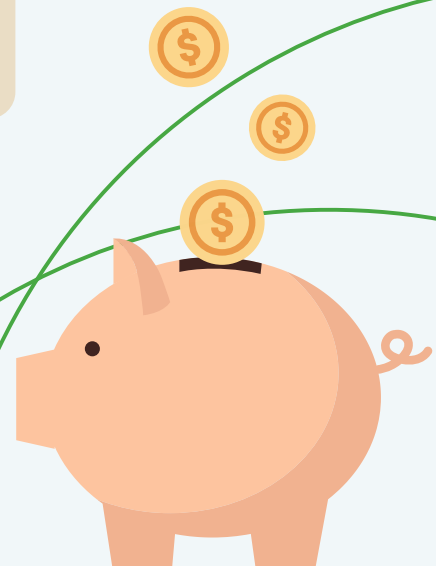
Retail and cashback discounts via our Wellbeing Gateway

"Refer and Earn" program for successfully referring candidates to join the company

Fitness passport – corporate health and fitness program allowing members to access a wide range of health and fitness suppliers, such as gyms and pools, for a single low membership fee

Salary sacrifice options for superannuation and motor vehicles

Committee and social clubs in various locations





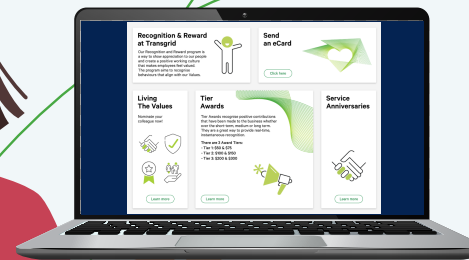
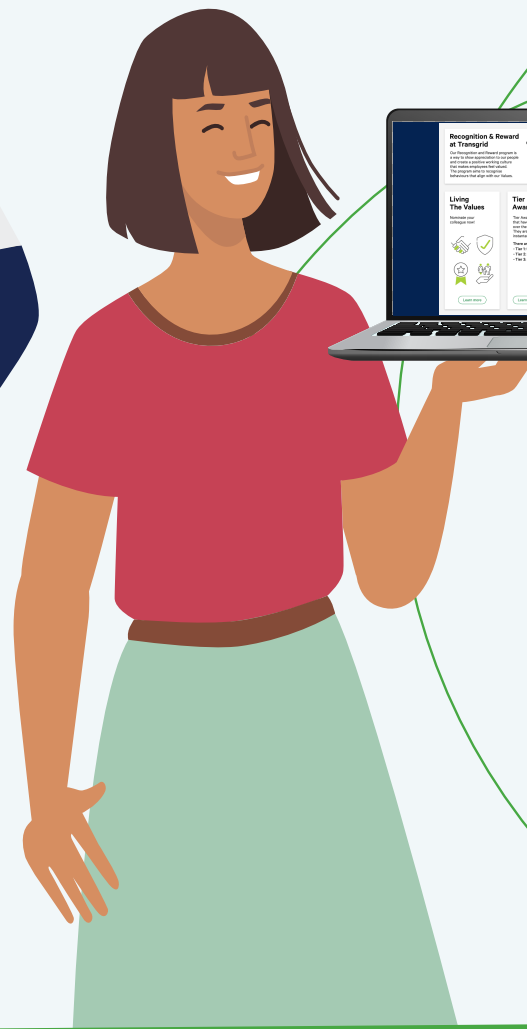
Development & recognition

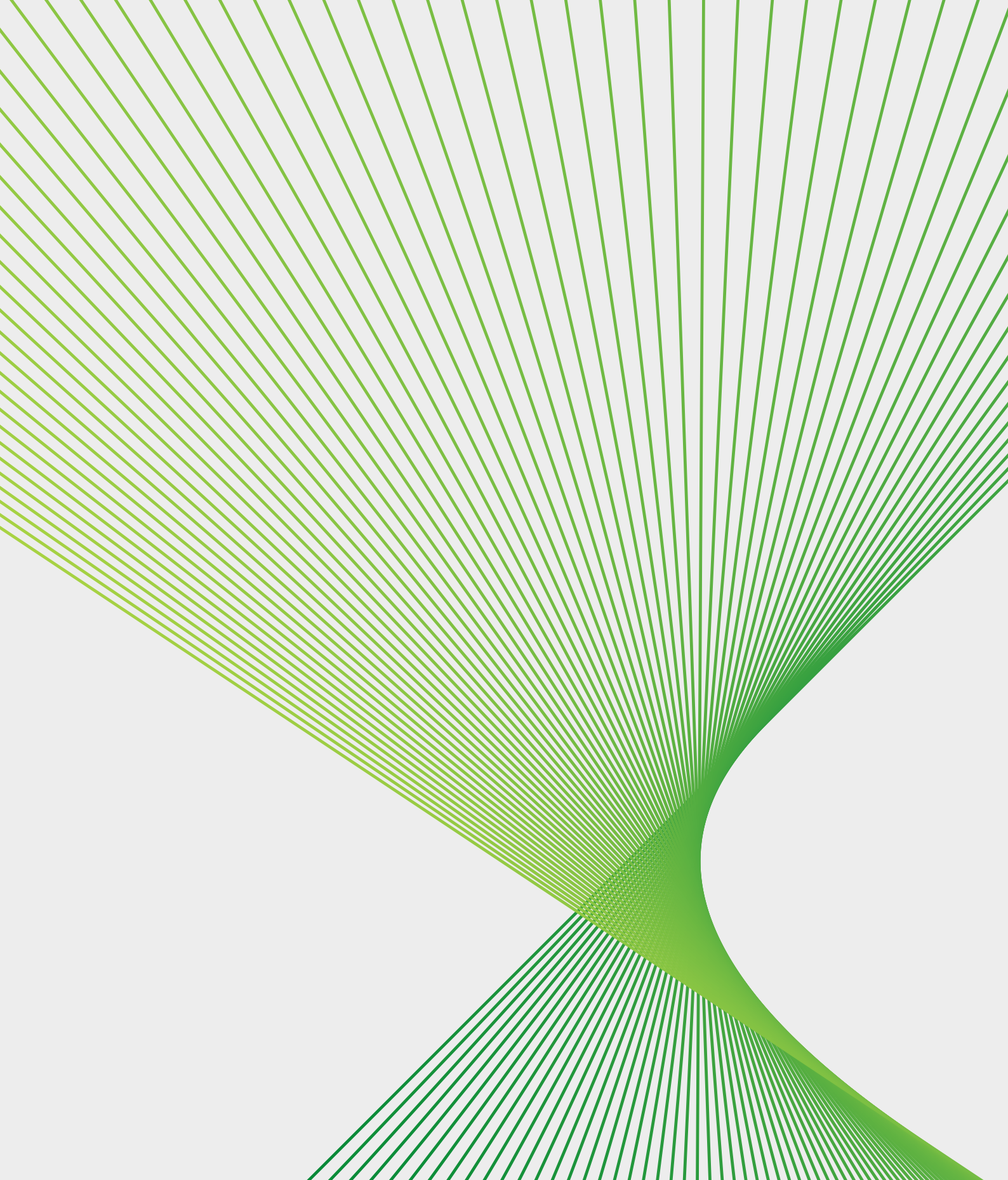
We are committed to supporting, growing and helping our people achieve their potential. We offer fulfilling careers and encourage all our people to take advantage of ongoing opportunities to develop their skills.

Study assistance program and study leave

Service recognition to celebrate different milestones

Recognition & Reward program to show appreciation to your colleagues





Follow us on social media



Find out more at:

Telephone: 1800 222 537

Email: people@Transgrid.com.au

www.transgrid.com.au