

## Work Notification | January 2025

### Upcoming work at Tarcutta

REF: HLW-008

HumeLink is one of Australia's largest energy infrastructure projects connecting renewable energy sources to the grid and helping to put downward pressure on energy prices. The project consists of 365 kilometres of 500 kV overhead transmission lines connecting Wagga Wagga, Bannaby and Maragle and is being delivered in two sections.

The section between Wagga Wagga, Maragle and Wondalga is being constructed by UGL Engineering and CPB Contractors, working in joint venture as the HumeLink West JV.

#### About the work

We are starting enabling work at Mates Gully Road, Tarcutta **from 13 January 2025** to prepare for construction of the Tarcutta accommodation facility and compound. Work activities will include:

- Locating underground utilities and services including power, gas, water and telecommunications
- Survey, investigation and monitoring including biodiversity, heritage, noise, dust and vegetation
- Minor excavation for surveys and utilities investigations
- Equipment and other deliveries to work sites
- Drone and aerial photography.

All work will be carried out in line with the project [Conditions of Approval](#) available on the NSW Government Major Projects website [planningportal.nsw.gov.au/major-projects/projects/humelink](http://planningportal.nsw.gov.au/major-projects/projects/humelink).

#### What you can expect

There will be an increased number of construction vehicles across the project area during our work. The type of plant and equipment you can expect to see as part of the establishment of access to the accommodation facility are vacuum extraction vehicles, compaction rollers, excavators, bobcats with attachments, drone cameras, heavy and light vehicles.

Machinery and equipment may generate dust, noise and vibration. We will make every effort to minimise impacts by:

- Minimising the number of machines/vehicles to be used
- Ensuring all machinery and vehicles are maintained and serviced
- Turning off machinery and vehicles when not in use
- Fitting equipment with devices to minimise noise
- Using water carts, stabilising stockpiles and reducing speed on unsealed roads to suppress dust
- Monitoring dust, noise and vibration to manage any potential impacts and change our work if required.

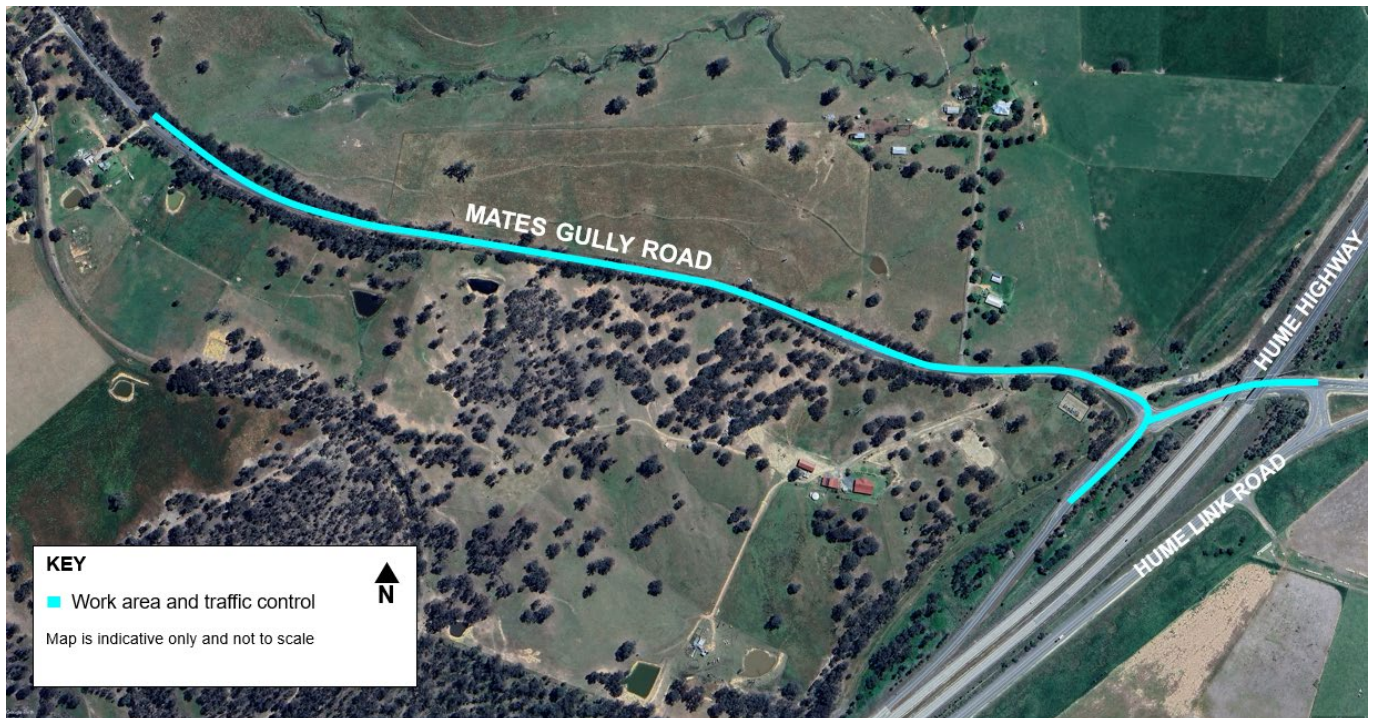
Traffic control will be in place to assist road users including temporary traffic lights, boom gates, signage, speed reductions and stop/slow traffic management. Please keep to the signposted speed limits, follow the direction of traffic controllers, and drive to the conditions such as slowing down in wet weather and poor visibility. For the latest traffic updates, visit [livetraffic.com](http://livetraffic.com) or download the app Live Traffic NSW.

#### When we are working

Work will take place during standard construction hours of **7am to 6pm, Monday to Friday** and **8am to 1pm on Saturdays**. If work out of these hours is required, we will contact you at least seven days before the work starts.

## Where we will be working

Work will take place on Mates Gully Road, Tarcutta, shown in the map below.



## What happens next

We'll continue to keep you updated about the project and let you know of any work we're planning that might impact you. If you have questions or concerns about any of the above, please contact our Community and Stakeholder Engagement team on 1800 317 367 or [humelink@transgrid.com.au](mailto:humelink@transgrid.com.au).

We welcome your feedback on the HumeLink West JV Community Communications Strategy. Visit [transgrid.com.au/humelink-west/#Strategies-Plans-and-Programs](https://transgrid.com.au/humelink-west/#Strategies-Plans-and-Programs) to view the strategy, and connect with us to have your say.



### Stay up to date with our work

Please head to [transgrid.com.au/HumeLink](https://transgrid.com.au/HumeLink) or scan the QR code to subscribe to regular updates, and for more information on the project.

## Connect with us

Transgrid is committed to working with landowners and communities through the development of HumeLink. Please connect with us for more information.



1800 317 367 (free call)

[humelink@transgrid.com.au](mailto:humelink@transgrid.com.au)

[www.transgrid.com.au/humelink](https://www.transgrid.com.au/humelink)

**Privacy statement:** Transgrid recognises the importance of privacy and protecting the personal information it holds, uses and discloses in line with the Privacy Act. It is committed to protecting personal information and handling personal information responsibly and in accordance with its obligations.