

EnergyConnect Construction

FACT SHEET

When will work start?

Construction will be staged and we will liaise closely with you about when you can expect work on your property.

We anticipate work will commence on the NSW-Western section in early 2022.

The entire interconnector will take approximately two years to build.

What to expect on your property

After all necessary permits and approvals are in place, the team will schedule work in consultation with you.

The main construction activities include:

- clearing vegetation and site establishment works
- ancillary activities to facilitate the construction of the interconnector (e.g. access tracks, laydown and staging areas)
- construction of the proposed transmission towers and lines
- demobilisation and remediation of construction areas.

The construction of the proposed transmission towers involves excavation works at each tower site. This work is required to install foundations, level the ground around them and install drainage.

The transmission line towers will typically be assembled in sections on the ground and lifted into place using cranes.

Once a tower is erected and secured, the transmission line will be strung by either a ground-pulled draw-wire (with brake/winch sites) or a line-stringing drone.

More detail on how the transmission lines are built is provided on the back page.

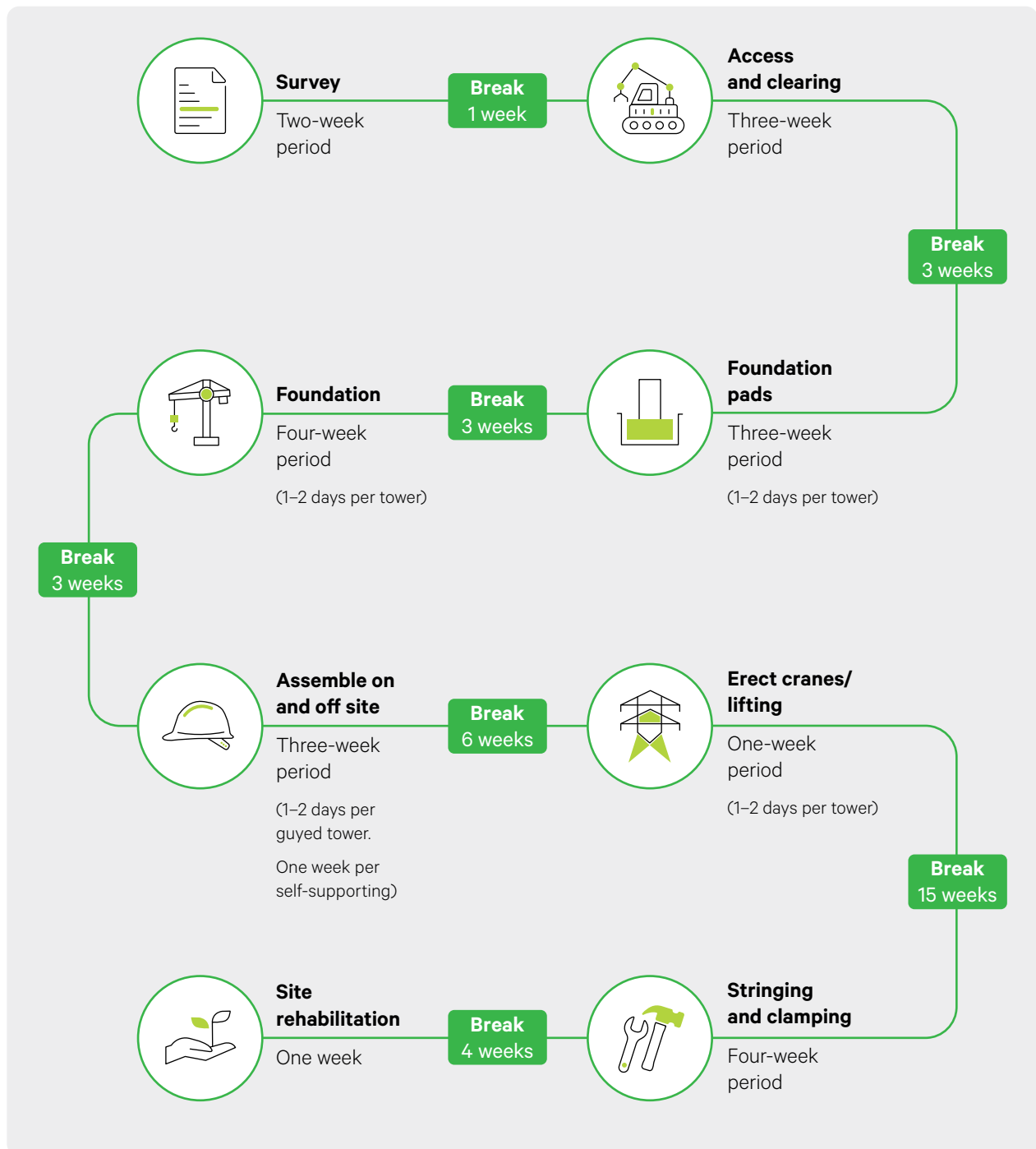
Construction workforce and hours

The workforce size will vary depending on the stage of construction and associated activities. You can reasonably expect between 10 and 50 workers on your property at any one time.

Construction work will take place between 7am and 7pm, seven days per week.

We will ensure you have full knowledge of the works schedule in advance and do our best to notify you of any changes.

How are transmission lines built?



* The sequencing and timeframes indicated allow crews to work efficiently along the construction line and are indicative.

Connect with us

Transgrid is committed to working with landowners and communities through the construction of EnergyConnect. Please connect with us if you need any information.



1800 49 06 66 (free call)
 pec@transgrid.com.au
transgrid.com.au/energyconnect

Subscribe to our project newsletter at
transgrid.com.au/ecsubscribe